



RESCHEDULED BOARD MEETING

Wednesday, October 19, 2016, 9:30 am

AGENDA

1. Call to Order
2. Pledge of Allegiance
3. Roll Call
4. Approval of Minutes
 - *August 3, 2016 Regular Board Meeting*
5. Comments from the Public
6. Comments from Advisory Committee Members (TAC/CAC/BPAC)
7. Approval of Agenda
8. Consent Agenda
 - 8a. Appointment to the Bicycle-Pedestrian Advisory Committee (BPAC): Appointment of a Resident Running/Hiking Representative to the BPAC to fill a vacancy.

Action: Appoint or do not appoint.
 - 8b. Administrative Amendment to the FY 2016/17 – FY 2020/21 Transportation Improvement Program (TIP): Notification of an administrative amendment to the TIP to incorporate **Florida's Turnpike bridge** painting, design, and resurfacing projects.

Action: Accept or do not accept.
 - 8c. 2016 Traffic Count Data Management System (TCDMS) Scope of Services: Approval of the scope of services to perform the 2016 traffic counts for the TCDMS.

Action: Approve or do not approve.
9. Action Items
 - 9a. Executive Director Employment Agreement Addendum: Approval of an Employment Agreement Addendum pertaining to compensation for the Executive Director.

Action: Approve the addendum, approve with conditions, or do not approve.

- 9b. Congestion Management Process (CMP) Major Update Scope of Work: Approval of the scope of work to complete Phase I of the CMP Major Update.
- Action: Approve the scope of work, approve with conditions, or do not approve.*
- 9c. Midway Road Project Development & Environment (PD&E) Study: A presentation of the PD&E Study for the widening of Midway Road from Glades Cut Off Road to Selvitz Road.
- Action: Recommend a typical section alternative, recommend with conditions, or do not recommend.*
- 9d. SR-A1A North Causeway Bridge PD&E Study: A presentation of the PD&E Study for the replacement of the SR-A1A North Causeway Bridge.
- Action: Recommend a bridge replacement alternative, recommend with conditions, or do not recommend.*
10. FDOT Comments
11. Recommendations/Comments by Members
12. TPO Staff Comments
13. Next Meeting: The next St. Lucie TPO Board Meeting is a regular meeting scheduled for 2:00 pm on Wednesday, December 7, 2016.
14. Adjourn

NOTICES

The St. Lucie TPO satisfies the requirements of various nondiscrimination laws and regulations including Title VI of the Civil Rights Act of 1964. Public participation is welcome without regard to race, color, national origin, age, sex, religion, disability, income, or family status. Persons wishing to express their concerns about nondiscrimination should contact Marceia Lathou, the Title VI/ADA Coordinator of the St. Lucie TPO, at 772-462-1593 or via email at lathoum@stlucieco.org.

Persons who require special accommodations under the Americans with Disabilities Act (ADA) or persons who require translation services (free of charge) should contact Marceia Lathou at 772-462-1593 at least five days prior to the meeting. Persons who are hearing or speech impaired may use the Florida Relay System by dialing 711.

Items not included on the agenda may also be heard in consideration of the best interests of the **public's health, safety, welfare, and as necessary to protect every person's right of access**. If any person decides to appeal any decision made by the St. Lucie TPO with respect to any matter considered at this meeting, that person shall need a record of the proceedings, and for such a purpose, that person may need to ensure that a verbatim record of the proceedings is made which includes the testimony and evidence upon which the appeal is to be based.

Kreyòl Ayisyen: Si ou ta renmen resevwa enfòmasyon sa a nan lang Kreyòl Ayisyen, tanpri rele nimewo 772-462-1593.

Español: Si usted desea recibir esta información en español, por favor llame al 772-462-1593.

REGULAR BOARD MEETING

DATE: Wednesday, August 3, 2016

TIME: 2:00 pm

LOCATION: St. Lucie TPO
Coco Vista Centre
466 SW Port St. Lucie Boulevard, Suite 111
Port St. Lucie, Florida

MINUTES

1. Call to Order

Chairwoman Hensley called the meeting to order at 2:03 pm.

2. Pledge of Allegiance

Chairwoman Hensley led the Pledge of Allegiance.

3. Roll Call

The roll was called, and a Quorum was noted with 10 members in attendance.

Members present:

Kathryn Hensley, Chairwoman
Mayor Linda Hudson, Vice Chair
Mayor Greg Oravec
Darrell Drummond
Commissioner Chris Dzadovsky
Commissioner Frannie Hutchinson
Commissioner Paula Lewis
Councilwoman Shannon Martin

Representing:

St. Lucie County School Board
City of Fort Pierce
City of Port St. Lucie
Community Transit
St. Lucie County
St. Lucie County
St. Lucie County
City of Port St. Lucie

Commissioner Tod Mowery
Councilman Ron Bowen

St. Lucie County
City of Port St. Lucie

Others attending:

Peter Buchwald
Ed DeFini
Yi Ding
Marceia Lathou
Mary Holleran
Carol Bryan
Linda Ferreira
Dan Hiden
Victoria Williams
Myroslava Skoroden
Edith Majewski
Heather Young
John L. DiMola
Alice Bojanowski
Michael Minton

Representing:

St. Lucie TPO
St. Lucie TPO
St. Lucie TPO
St. Lucie TPO
Recording Specialist
Resident
Stanley Consultants
FDOT Fort Pierce Operations
FDOT Turnpike Enterprise
FDOT District 4
City of Port St. Lucie
St. Lucie County Attorney
Resident
Martin MPO
Resident

- 4. Approval of Minutes
 - *June 1, 2016 Regular Meeting*

* MOTION – MOVED by Commissioner Dzadovsky to approve the Minutes of the June 1, 2016 Regular Board Meeting.

** SECONDED by Commissioner Lewis Carried UNANIMOUSLY

- 5. Comments from the Public – None

- 6. Comments from Advisory Committee Members (TAC/CAC/BPAC) - None

- 7. Approval of Agenda

* MOTION – MOVED by Commissioner Hutchinson to approve the Agenda.

** SECONDED by Commissioner Lewis Carried UNANIMOUSLY

8. Consent Agenda

8a. Amendment to the FY 2016/17 – 2020/21 Transportation Improvement Program (TIP): Notification of an administrative amendment to the TIP to incorporate the FY 2016/17 Roll-Forward Report.

* MOTION - MOVED by Commissioner Hutchinson to approve the Consent Agenda.

** SECONDED by Commissioner Lewis Carried UNANIMOUSLY

9. Action Items

9a. Executive Director's Performance Review: Review and approval of the Executive Director's performance for FY 2015/16.

St. Lucie TPO Attorney Heather Young advised the Board that the TPO Executive Director's performance review is being conducted for FY 2015/16. Ms. Young provided the results of the reviews received noting the evaluations tallied an average of 17.11.

Chairwoman Hensley acknowledged Mr. Buchwald's leadership, that through his ability the bar has been set higher and the profile of the TPO has risen significantly. Mr. Buchwald is Chairman of the statewide organization, actively participates in federal and state conferences, community outreach efforts and attends every meeting dealing with transportation.

Chairwoman Hensley indicated the Executive Committee will convene immediately following this meeting to consider the FY 16/17 compensation for the Executive Director based on the results of the Performance Review.

Commissioner Dzdvosky confirmed Mr. Buchwald had received an increase commensurate with his peers last year.

Councilwoman Martin agreed that Mr. Buchwald has worked well with the City of Port St. Lucie and the staff and is passionate about his position.

* MOTION – MOVED by Councilwoman Martin to approve the review of the Executive Director's performance for 2015/16.

** SECONDED by Councilman Bowen Carried UNANIMOUSLY

9b. Staff Performance Bonus Program: Consideration of the 2016 Performance Bonus Program for TPO staff.

Mr. Buchwald reviewed the Staff Performance Bonus Program for TPO staff which was adopted by the Board in October 2013. The most recent salary increases for staff approved by the Board in August 2015 consisted of a performance multiplier of 1.5 with no cost of living adjustment (COLA). This resulted in a maximum salary increase for any staff member of three percent.

At their meeting on July 15th the Executive Committee reviewed the salary increases, various COLAs and performance multipliers, and discussed the proposed 2016 performance bonus program multiplier of 2.5, with no COLA proposed for 2016. The 2016/17 budget adopted by the TPO Board in April 2016 includes an overall increase in staff salaries for 2016/17 of \$20,000, an approximate five percent increase from 2015/16. Total salary increases for staff members will not exceed that amount.

Commissioner Dzadvosky confirmed that the \$20,000 maximum was total staff compensation, not individual.

* MOTION – MOVED by Councilwoman Martin to recommend approval of the 2016 Performance Bonus Program with a multiplier of 2.5 and no cost of living adjustment.

** SECONDED by Commissioner Mowery Carried UNANIMOUSLY

9c. 2016/17 List of Priority Projects (LOPP): Review and adoption of the 2016/17 LOPP for the St. Lucie TPO

Mr. Buchwald provided background information on the adoption of the LOPP as part of St. Lucie TPO's Transportation Improvement Program (TIP). The draft 2016/17 LOPP incorporates comments from the Informal Priority Projects Meeting. Mr. Buchwald identified significant changes from the 2015/16 LOPP including projects that were removed because the projects are programmed for construction. The remaining projects were re-prioritized, and the status and estimated costs were updated as necessary.

The Congestion Management Process (CMP) will receive a Major Update during the fiscal year and no changes are proposed to the CMP LOPP.

No changes were made to the Transit LOPP. Expanding select routes and service, purchasing buses, and parking lot infrastructures remain a priority.

Revisions to the Transportation Alternatives (TA) LOPP consisted of projects that were removed because they are programmed for construction.

* MOTION – MOVED by Commissioner Lewis to adopt the 2016/17 List of Priority Projects.

** SECONDED by Mr. Drummond

Councilwoman Martin referred to the LOPP Master List. On projects ranked #1 and #3 on Port St. Lucie Boulevard, she noted the severity of traffic issues in those areas, and asked if they could be combined so as to advance #3.

Commissioner Hutchinson commented that other roads in the County experiencing heavily congested traffic areas, especially at intersections, have similar concerns. Funding sources often occur at different stages and it would complicate the funding process for funding that is already specified for certain project segments.

Commissioner Dzadvosky proposed this could be an opportunity to gain support for the ½ cent sales tax to help move infrastructure improvement projects forward.

Board Members continued to discuss traffic improvements underway and important projects that will begin in the near future.

** MOTION Carried UNANIMOUSLY

9d. Walton Road Multimodal Improvements Feasibility Study: Review and acceptance of the revised Walton Road Multimodal Improvements Feasibility Study.

Ms. Linda Ferreira was introduced to present the revised Walton Road Multimodal Improvements Feasibility Study based on comments received.

The study concentrated on connectivity and safety along Walton Road and improvements on and off the corridor. Alternative concepts for future designs were presented in three segments, Alternatives A, B and C. Different options for each segment were presented with updated cost

estimates included for drainage and curb and gutters. Issues previously identified were addressed including the boardwalk option with annual maintenance costs and the life span, obtaining rights-of-way, animal crossings, lane width variances, buffering bike lanes from traffic, storm water improvements, and requirements for environmental permits to go through the Savannas.

Mr. Buchwald explained the Feasibility Study was a starting point, and depending upon whether it's considered a priority to be added to the LOPP, and should there be funding identified, the study is something to build upon that won't have to be re-examined. One of the challenges facing the project is that it is not on the State system and Federal funding would have to be explored.

Mayor Oravec addressed the cost of the road elevated as a causeway that could restore actual water flow. Ms. Ferreira identified the costs involved for a bridge and a road elevation explaining it would be more costly than the other alternatives.

* MOTION – MOVED by Commissioner Dzadvosky to accept the revised Walton Road Multimodal Improvement Feasibility Study.

** SECONDED by Mayor Hudson

Commissioner Hutchinson commented on the Study's usefulness as something to add to the table and the possibility of funding if the All Aboard Florida Passenger Rail Project is required to make safety improvements.

** MOTION Carried 9-1 Mayor Oravec Opposed

9e. Public Involvement Program (PIP) Annual Evaluation of Effectiveness and Update: Review and acceptance of the effectiveness of the St. Lucie TPO's PIP during FY 2015/16.

Mr. Buchwald introduced Yi Ding, Livability Planner, to provide the results of the annual evaluation of the effectiveness of the PIP.

Mr. Ding reviewed the Public Outreach Matrix which indicated the various performance measures used by TPO staff. Photos and slides were displayed of various outreach events. Mr. Ding reviewed the PIP objectives and strategies with their measures of effectiveness including comparisons for the previous fiscal years and the percentage change for each strategy.

Social media and the TPO website produced the greatest results and resulted in increases in participation for recipients who responded and are recommended for public outreach for upcoming planning studies.

* MOTION – MOVED by Commissioner Lewis

** SECONDED by Mayor Hudson Carried UNANIMOUSLY

10. FDOT Comments - None

11. Recommendations/Comments by Members - Commissioner Lewis commented on the good news announcement that St. Lucie County won an award at a recent National Conference for the County's Free Youth Ride Program for transit.

Commissioner Dzdvosky requested an update on the North Bridge planning process. Mr. Buchwald advised that the final public hearing for the public to see the plans and have an opportunity for input will be held in November. He elaborated on the proposed plans for the bridge with construction anticipated within the next three years.

Commissioner Dzdvosky agreed the bridge was important to many citizens and tourists, including timing for the proposed hotel development in the County. He thanked Mr. Buchwald and the TPO for their efforts.

Chairwoman Hensley reminded everyone that school opens on August 15th and thousands of students and School District employees will be out and about, and safety, as always, is a major concern.

12. TPO Staff Comments – Mr. Buchwald announced that the TPO is once again receiving national recognition for best practices for its Public Involvement Program using social media as a successful tool. Staff will be presenting at the National "Tools for the Trade Conference" to be held in Charleston, South Carolina next month.

13. Next Meeting: The next meeting is a regular TPO Board meeting scheduled for 2:00 pm on Wednesday, October 5, 2016.

14. Adjourn – The meeting was adjourned at 2:50 pm.

Respectfully submitted:

Approved by:

Mary F. Holleran
Recording Specialist

Kathryn Hensley
Chairwoman

DRAFT



Coco Vista Centre
466 SW Port St. Lucie Blvd, Suite 111
Port St. Lucie, Florida 34953
772-462-1593 www.stlucietpo.org

AGENDA ITEM SUMMARY

Board/Committee: St. Lucie TPO Board

Meeting Date: October 19, 2016

Item Number: 8a

Item Title: Appointment to the Bicycle-Pedestrian Advisory Committee (BPAC)

Item Origination: St. Lucie TPO By-Laws, Rules, and Procedures

UPWP Reference: Task 6.1: Public Involvement

Requested Action: Appoint or do not appoint


Staff Recommendation: It is recommended that Mr. Scott Jones be appointed as a Resident Running/Hiking Representative to the BPAC to fill a vacancy.

Attachments

- Application



APPLICATION FOR SERVING ON COMMITTEES/BOARD

1. Name Scott Jones
 2. Home or Mobile Phone [REDACTED] 3. Email Address msjoneser@gmail.com
 4. Home Address 707 S 11th St.
 5. How long have you lived at this location? 6 years
 6. Business Address (optional) _____
 7. Business Phone (optional) _____
 8. Are you employed by a government agency? Yes X* No _____
 9. Do you now serve on a government committee or board? Yes _____ No X
 10. If Yes, which one(s)? _____
 11. Brief summary of your education Bachelor of Science in Biology
 12. Brief summary of your experience 10+ years of work in Biological + Marine research
 13. Please select each St. Lucie Transportation Planning Organization (TPO) Board or Committee you are interested in serving on (more than one may be selected):
Transportation Disadvantaged Local Coordinating Board (LCB) _____
Citizens Advisory Committee (CAC) _____
Bicycle-Pedestrian Advisory Committee (BPAC) X
 14. May your application be submitted to the TPO Board whenever vacancies occur on the selected Board/Committee(s) until you are appointed? Yes X No _____
 15. Will you be able to attend quarterly LCB meetings, CAC meetings every other month, or BPAC meetings every other month? Yes X No _____
- SIGNATURE  Date September 15, 2016

Submit completed application by mail, fax, or email to:

MAIL: St. Lucie Transportation Planning Organization
466 SW Port St. Lucie Boulevard, Suite 111
Port St. Lucie, FL 34953
FAX: 772-785-5839
EMAIL: TPOAdmin@stlucieco.org

Note: Application is effective for two years from the date of completion

TITLE VI STATEMENT: The St. Lucie TPO satisfies the requirements of various nondiscrimination laws and regulations including Title VI of the Civil Rights Act of 1964. Public participation is welcomed without regard to race, color, national origin, age, sex, religion, disability, income, or family status. Persons wishing to express their concerns about nondiscrimination should contact Marceia Lathou, the Title VI/ADA Coordinator of the St. Lucie TPO, at 772-462-1593 or via email at lathoum@stlucieco.org.

Crèole: Si ou ta rinmin recevua information sa en crèole si l bous plait rèlè 772-462-1777.

Español: Si usted desea recibir esta informacìon en español, por favor llame al 772-462-1777.

AGENDA ITEM SUMMARY

Board/Committee: St. Lucie TPO Board

Meeting Date: October 19, 2016

Item Number: 8b

Item Title: Amendment to the FY 2016/17 – FY 2020/21
Transportation Improvement Program (TIP)

Item Origination: Florida's Turnpike Enterprise

UPWP Reference: Task 3.3 – TIP

Requested Action: Accept or do not accept

Staff Recommendation: Based on the administrative TIP amendment being developed and approved in compliance with applicable policies and procedures, it is recommended that the notification be accepted.

Attachments

- Staff Report
- TIP Amendment #2 Approval Certification Form
- Project Summaries

MEMORANDUM

TO: St. Lucie TPO Board

FROM: Peter Buchwald
Executive Director

DATE: September 26, 2016

SUBJECT: Administrative Amendment to the FY 2016/17 –
FY 2020/21 Transportation Improvement Program
(TIP)

BACKGROUND

The FY 2016/17 – FY 2020/21 TIP was adopted by the St. Lucie TPO on June 1, 2016, and includes the painting of the Midway Road Bridge over Florida's Turnpike. Subsequent to the adoption of the TIP, it was determined by Florida's Turnpike Enterprise (FTE) that several other bridge painting and resurfacing projects on Florida's Turnpike were inadvertently not included in the Turnpike Work Program materials provided to the TPO at the time of the Draft Tentative Work Program endorsement and TIP adoption. FTE requested that the TIP be amended to incorporate these projects.

The Federal Highway Administration allows these types of TIP amendments to be approved administratively between July 1st and September 30th. Adopted TPO policy requires that the TPO Board is notified of any administrative TIP amendments.

ANALYSIS

The administrative TIP amendment incorporates the bridge painting and resurfacing projects on Florida's Turnpike using FTE funds. Therefore, the incorporation of these projects will not impact the fiscal constraint of the TIP. These maintenance projects are consistent with the goals and objectives of the Go2040 Long Range Transportation Plan (page 2-16).

RECOMMENDATION

Based on the administrative TIP amendment being developed and approved in compliance with applicable policies and procedures, it is recommended that the notification be accepted.



TIP Amendment Number 2

FY 2016/17 – FY 2020/21 TRANSPORTATION IMPROVEMENT PROGRAM
 ADMINISTRATIVE AMENDMENT APPROVAL CERTIFICATION FORM

Florida’s Turnpike Bridge Painting and Resurfacing Projects

The St. Lucie Transportation Planning Organization (St. Lucie TPO), through administrative delegation to its Executive Director, approved incorporation of the attached projects into the FY 2016/17 – FY 2020/21 Transportation Improvement Program (TIP) adopted on June 1, 2016. This amendment will be recognized by the Federal Highway Administration after the TIP becomes effective with regard to the start of the Federal fiscal year on October 1, 2016.

I attest that this TIP administrative amendment was developed and approved in compliance with applicable policies and procedures.

Peter Buchwald

Executive Director
 St. Lucie TPO

9/26/16

Date

**Transportation Improvement Program (TIP) Amendment
FY 2016/17 - FY 2020/21**



TIP Amendment Number: 2a
 Current TIP Page Number: _____
 New TIP Page Number (if applicable): C 7-3

_____ Is a STIP amendment needed for this TIP Amendment? (check if yes)

STIP Page Number (if applicable): _____

On October 5, 2016, the St. Lucie Transportation Planning Organization (St. Lucie TPO) authorized the Executive Director to amend the St. Lucie TPO TIP that was developed and adopted in compliance with U.S.C. Title 23 and Title 49 in a continuing, cooperative, and comprehensive transportation planning process, as a condition to the receipt of federal assistance, and to approve the associated STIP amendments

This TIP Amendment is consistent with the Go2040 Long Range Transportation Plan (LRTP) and does not change financial Go2040 LRTP Page Number (if applicable) 2-16 constraints.

TIP Amendment Criteria

- A The change adds new individual projects to the current TIP
- B The change adversely impacts financial constraint
- C The change results in major scope changes
- D The change removes or deletes an individually listed project from the TIP
- E The change results in a cost increase that is greater than 20 percent and greater than \$2 million.

----- **PROJECT INFORMATION** -----

Project Name: BRIDGES 940076 AND 940951 GLADES CUT OFF ROAD

TIP Criteria: A

Reason for Change/Notes: Adds a project that was not included in the Turnpike Work Program materials provided to the TPO at the time of FDOT Draft Tentative Work Program Endorsement and TIP adoption

Status	FPN	Limits	Description	Phase	Fund	FY 2016/17	FY 2017/18	FY 2018/19	FY 2019/20	FY 2020/21
Current										
Proposed	4385501	Turnpike Mainline Over Glades Cutoff Road (CR 709)	Bridge painting	PE CST	PKYR PKYR				\$110,314	\$1,377,553
Net Change									\$110,314	\$1,377,553

This TIP Amendment has been prepared in accordance with Sections 5.14 and 5.15 of the FDOT *Metropolitan Planning Organization Program Management Handbook*

Authorized Signatures:

 St. Lucie TPO Chairperson or Executive Director

 Florida Turnpike Authority Representative

**Transportation Improvement Program (TIP) Amendment
FY 2016/17 - FY 2020/21**



TIP Amendment Number: 2b
 Current TIP Page Number: _____
 New TIP Page Number (if applicable): C 7-4

_____ Is a STIP amendment needed for this TIP Amendment? (check if yes)

STIP Page Number (if applicable): _____

On October 5, 2016, the St. Lucie Transportation Planning Organization (St. Lucie TPO) authorized the Executive Director to amend the St. Lucie TPO TIP that was developed and adopted in compliance with U.S.C. Title 23 and Title 49 in a continuing, cooperative, and comprehensive transportation planning process, as a condition to the receipt of federal assistance, and to approve the associated STIP amendments

This TIP Amendment is consistent with the Go2040 Long Range Transportation Plan (LRTP) and does not change financial Go2040 LRTP Page Number (if applicable) 2-16 constraints.

TIP Amendment Criteria

- A The change adds new individual projects to the current TIP
- B The change adversely impacts financial constraint
- C The change results in major scope changes
- D The change removes or deletes an individually listed project from the TIP
- E The change results in a cost increase that is greater than 20 percent and greater than \$2 million.

----- **PROJECT INFORMATION** -----

Project Name: BRIDGES 940049 AND 940082 RIM DITCH

TIP Criteria: A

Reason for Change/Notes: Adds a project that was not included in the Turnpike Work Program materials provided to the TPO at the time of FDOT Draft Tentative Work Program Endorsement and TIP adoption

Status	FPN	Limits	Description	Phase	Fund	FY 2016/17	FY 2017/18	FY 2018/19	FY 2019/20	FY 2020/21
Current										
Proposed	4385511	Turnpike Mainline Over Rim Ditch (MP 142.2)	Bridge painting	PE CST	PKYR PKYR				\$98,627	\$1,204,241
Net Change									\$98,627	\$1,204,241

This TIP Amendment has been prepared in accordance with Sections 5.14 and 5.15 of the FDOT *Metropolitan Planning Organization Program Management Handbook*

Authorized Signatures:

 St. Lucie TPO Chairperson or Executive Director

 Florida Turnpike Authority Representative

**Transportation Improvement Program (TIP) Amendmen
FY 2016/17 - FY 2020/21**



TIP Amendment Number: 2c
 Current TIP Page Number: _____
 New TIP Page Number (if applicable): C 7-5

___ Is a STIP amendment needed for this TIP Amendment? (check if yes)

STIP Page Number (if applicable): _____

On October 5, 2016, the St. Lucie Transportation Planning Organization (St. Lucie TPO) authorized the Executive Director to amend the St. Lucie TPO TIP that was developed and adopted in compliance with U.S.C. Title 23 and Title 49 in a continuing, cooperative, and comprehensive transportation planning process, as a condition to the receipt of federal assistance, and to approve the associated STIP amendments

This TIP Amendment is consistent with the Go2040 Long Range Transportation Plan (LRTP) and does not change financial Go2040 LRTP Page Number (if applicable) 2-16 constraints.

TIP Amendment Criteria

- A The change adds new individual projects to the current TIP
- B The change adversely impacts financial constraint
- C The change results in major scope changes
- D The change removes or deletes an individually listed project from the TIP
- E The change results in a cost increase that is greater than 20 percent and greater than \$2 million.

----- **PROJECT INFORMATION** -----

Project Name: TURNPIKE RESURFACING-SR 70/OKEECHOBEE ROAD TO NORTH COUNTY LINE

TIP Criteria: A

Reason for Change/Notes: Adds a project that was not included in the Turnpike Work Program materials provided to the TPO at the time of FDOT Draft Tentative Work Program Endorsement and TIP adoption

Status	FPN	Limits	Description	Phase	Fund	FY 2016/17	FY 2017/18	FY 2018/19	FY 2019/20	FY 2020/21
Current										
Proposed	4365171	SR-70/Okeechobee Road (MP 153.23) to SLC/IR County Line (MP 169.32)	Resurfacing of a 16-mile segment of mainline with guardrail installation and signing and pavement marking improvements. Includes FPN #4365172 and FPN #4365173.	PE CST	PKYR PKYR	\$1,419,000	\$19,353,000	\$503,000		
Net Change						\$1,419,000	\$19,353,000	\$503,000		

This TIP Amendment has been prepared in accordance with Sections 5.14 and 5.15 of the FDOT *Metropolitan Planning Organization Program Management Handbook*

Authorized Signatures:

 St. Lucie TPO Chairperson or Executive Director

 Florida Turnpike Authority Representative

**Transportation Improvement Program (TIP) Amendmen
FY 2016/17 - FY 2020/21**



TIP Amendment Number: 2d
 Current TIP Page Number: _____
 New TIP Page Number (if applicable): C 7-6

___ Is a STIP amendment needed for this TIP Amendment? (check if yes)

STIP Page Number (if applicable): _____

On October 5, 2016, the St. Lucie Transportation Planning Organization (St. Lucie TPO) authorized the Executive Director to amend the St. Lucie TPO TIP that was developed and adopted in compliance with U.S.C. Title 23 and Title 49 in a continuing, cooperative, and comprehensive transportation planning process, as a condition to the receipt of federal assistance, and to approve the associated STIP amendments

This TIP Amendment is consistent with the Go2040 Long Range Transportation Plan (LRTP) and does not change financial Go2040 LRTP Page Number (if applicable) 2-16 constraints.

TIP Amendment Criteria

- A The change adds new individual projects to the current TIP
- B The change adversely impacts financial constraint
- C The change results in major scope changes
- D The change removes or deletes an individually listed project from the TIP
- E The change results in a cost increase that is greater than 20 percent and greater than \$2 million.

----- **PROJECT INFORMATION** -----

Project Name: TURNPIKE RESURFACING-BECKER ROAD TO SR-70/OKEECHOBEE ROAD

TIP Criteria: A

Reason for Change/Notes: Adds a project that was not included in the Turnpike Work Program materials provided to the TPO at the time of FDOT Draft Tentative Work Program Endorsement and TIP adoption

Status	FPN	Limits	Description	Phase	Fund	FY 2016/17	FY 2017/18	FY 2018/19	FY 2019/20	FY 2020/21
Current										
Proposed	4379861	Becker Road (MP 138) to SR-70/Okeechobee Road (MP 153.23)	Resurfacing of a 15-mile segment of mainline with guardrail installation and signing and pavement marking improvements. Includes FPN #4379862 and FPN #4379863.	PD&E PE CST	PKYR PKYR PKYR	\$285,000	\$1,419,000	\$19,298,000	\$541,000	
Net Change						\$285,000	\$1,419,000	\$19,298,000	\$541,000	

This TIP Amendment has been prepared in accordance with Sections 5.14 and 5.15 of the FDOT *Metropolitan Planning Organization Program Management Handbook*

Authorized Signatures:

 St. Lucie TPO Chairperson or Executive Director

 Florida Turnpike Authority Representative

**Transportation Improvement Program (TIP) Amendment
FY 2016/2017 - FY 2020/2021**



TIP Amendment Number: 6
 Current TIP Page Number: _____
 New TIP Page Number (if applicable): c 7-6

___ Is a STIP amendment needed for this TIP Amendment? (check if yes)

STIP Page Number (if applicable): _____

On October 5, 2016, the St. Lucie Transportation Planning Organization (St. Lucie TPO) authorized the Executive Director to amend the St. Lucie TPO TIP that was developed and adopted in compliance with U.S.C. Title 23 and Title 49 in a continuing, cooperative, and comprehensive transportation planning process, as a condition to the receipt of federal assistance, and to approve the associated STIP amendments.

This TIP Amendment is consistent with the 2035 St. Lucie/Martin Regional Long Range Transportation Plan (RLRTP) and does not change financial constraints.

RLRTP Page Number (if applicable): 2-16

TIP Amendment Criteria:

- A The change adds new individual projects to the current TIP
- B The change adversely impacts financial constraint
- C The change results in major scope changes
- D The change removes or deletes an individually listed project from the TIP
- E The change results in a cost increase that is greater than 20 percent and greater than \$2 million.

----- **PROJECT INFORMATION** -----

Project Name: DESIGN OF INTERIM TURNPIKE INTERCHANGE IMPROVEMENTS AT PORT ST LUCIE BOULEVARD (MP 143)

TIP Criteria: A

Reason for Change/Notes: Adds a project that was not included in the Turnpike Work Program materials provided to the TPO at the time of FDOT Draft Tentative Work Program Endorsement and TIP adoption. This is for design of interim Turnpike interchange improvements at Port St. Lucie Boulevard.

Status	FPN	Limits	Description	Phase	Fund	FY 2016/17	FY 2017/18	FY 2018/19	FY 2019/20	FY 2020/21
Current										
Proposed	439153	Florida's Turnpike interchange at Port St. Lucie Blvd (MP 143)	Design of interim interchange improvements; construction will be programmed in the next work program cycle.	PE	PKYR	\$430,595				
Net Change						\$430,595				

This TIP Amendment has been prepared in accordance with Sections 5.13 and 5.14 of the FDOT *Metropolitan Planning Organization Program Management Handbook*.

Authorized Signatures:

 St. Lucie TPO Chairperson or Executive Director

K Williams

 Florida Turnpike Authority Representative

AGENDA ITEM SUMMARY

Board/Committee:	St. Lucie TPO Board
Meeting Date:	October 19, 2016
Item Number:	8c
Item Title:	2016 Traffic Count Data Management System (TCDMS) Scope of Services
Item Origination:	Unified Planning Work Program (UPWP)
UPWP Reference:	Task 2.3: Traffic Count Program Management
Requested Action:	Approve or do not approve
Staff Recommendation:	Based on the scope, cost, and schedule being consistent with Task 2.3 of the UPWP, it is recommended that the 2016 TCDMS Scope of Services be approved.

Attachments

- Staff Report
- 2016 TCDMS Scope of Services

MEMORANDUM

TO: St. Lucie TPO Board

FROM: Peter Buchwald
Executive Director

DATE: September 26, 2016

SUBJECT: 2016 Traffic Count Data Management System (TCDMS)
Scope of Services

BACKGROUND

For a number of years, the local jurisdictions have been unable financially to maintain a formal traffic count program, and a traffic count program is necessary to monitor and analyze the performance of roadway segments for transportation planning purposes. Therefore, the TPO has collected and managed the traffic count program through the TCDMS and acted as a clearinghouse for the collection and management of all traffic counts performed in the TPO area by the cities, County, and the Florida Department of Transportation.

The FY 2016/17 – FY 2017/18 Unified Planning Work Program (UPWP) for the St. Lucie TPO includes Task 2.3, *Traffic Count Program Management*. The purpose of Task 2.3 is to continue to collect, monitor, and manage the highest quality of current traffic data on the public roadway network within the St. Lucie TPO area and provide the data in a publically-accessible, user-friendly format.

The web-based TCDMS was developed to identify the roadway traffic volumes and levels of service for transportation planning, monitoring, analysis, and managing purposes. The TCDMS has been used successfully for the processing, maintaining, and delivering of the traffic count information to the public and private sectors for the past several years. Task 2.3 of the UPWP specifies the continuation of the collection and processing of the traffic counts and the maintenance of the TCDMS for FY 2016/17.

ANALYSIS

The attached Scope of Services for the collection and processing of the 2016 traffic counts for the TCDMS was prepared by Tindale-Oliver & Associates (TOA). TOA is one of the General Planning Consultants for the St. Lucie TPO and has provided the traffic count collection and TCDMS maintenance services since the inception of the program.

A cost of \$33,571 is proposed by TOA for the 2016 traffic counts and includes the 103 volume counts and 21 classification counts specified in the attachment. The proposed cost is within the UPWP task budget, and the schedule proposed by TOA is consistent with the Completion Date identified in the UPWP task.

RECOMMENDATION

Based on the scope, cost, and schedule being consistent with Task 2.3 of the UPWP, it is recommended that the 2016 TCDMS Scope of Services be approved.

**ST. LUCIE COUNTY
TRAFFIC COUNTS PROGRAM**

2016 TRAFFIC COUNT DATA MANAGEMENT SYSTEM

SCOPE OF SERVICES

Prepared For:

St. Lucie Transportation Planning Organization

466 SW Port St. Lucie Boulevard

Port St. Lucie, FL 34953

ph (772) 462-1593, fax (772)462-2549



Prepared By:



135 W Central Boulevard, Suite 450

Orlando, FL 32801

ph (407) 657-9210, fax (407) 657-9106

August 15, 2016

INTRODUCTION

Previously, Tindale Oliver (TO) implemented the Traffic Counts Data Management System (TCDMS) for the St. Lucie TPO. As part of the ongoing traffic counts program and pursuant to Task 2.3 of the St. Lucie TPO 2016/17 – 2017/18 UPWP, the St. Lucie Transportation Planning Organization (TPO) plans to collect traffic counts on an annual basis.

This scope of service outlines the necessary tasks to collect, process, and Q/C the 2016 traffic counts. The 2016 traffic counts are a continuation of the program developed by the St Lucie TPO to collect traffic counts in St Lucie County.

TO will utilize the recently developed and implemented TCDMS to Q/C the 2016 traffic counts and, once a traffic count is considered acceptable, will upload these traffic counts into the TCDMS web application. As part of the Q/C process, TO will coordinate with the TPO to ensure the TPO is aware of any “failed” counts that may need to be redone.

This will be accomplished through the following sub-tasks:

Task 1 Administration and Coordination with Traffic Count Data Collection

Subconsultant: It is anticipated TO will contract with Culpepper and Terpening, Inc. to collect traffic counts (as has been done in past years). Scheduling of counts, recounts, and supervision as well as administration of the subconsultant contract will be performed by TO as part of this subtask.

Task 2 Traffic Count Data Collection: Traffic count data collection is to be performed at 124 locations, consistent with the established traffic count procedures as identified in Attachment 1. Specific locations will be approved by the TPO. At each location, the machine count data will be collected for a period of 48 hours during a “typical” weekday (Tuesday, Wednesday, and Thursday). Special care will be taken to ensure the counts are not performed during periods of non-typical vehicular patterns (i.e. when school is out, holidays, etc.). As in the past collection of traffic counts, it’s necessary to note that the count locations may need to be adjusted/revised during the data collection process. Such adjustments will be documented for reference and future use.

Task 3 Upload and Q/C Traffic Counts: As TO receives 2016 counts from the subconsultant, the counts will be uploaded into the TCDMS web application by TO’s Database Administrator. Using the TCDMS Web Application, TO staff will process, review, and Q/C each individual traffic count within five (5) business days of receiving the count and

will notify the subconsultant representative via email of any traffic counts which do not meet specifications and need to be recounted.

Budget:

The services described herein shall be completed for time and materials not to exceed \$33,571.32 based on the effort estimate included here as Attachment 1. Invoices shall be based on percent completion of work accomplished and as documented in the project status report.

Schedule:

The tasks shall be completed within four (4) months of Notice to Proceed.

2016 Traffic Counts

ACTIVITY	Principal-in-Charge \$ 200.00	Project Manager \$ 175.02	GIS Developer \$ 153.45	Senior Planner \$ 107.00	Senior Engineer \$ 137.36	Engineer \$ 100.13	GIS Analyst \$ 75.86	Planner \$ 83.45	Engineer Tech. \$ 57.35	Admin /Clerical \$ 68.29	TOTAL HOURS	COST BY ACTIVITY	
Process and Q/C 2016 Counts; Maintain and Support System	0	2	4	0	18	0	0	0	100	0	124	\$ 9,171.32	
Task 1 Administration and Coordination with Traffic Count Data Collection subconsultant: It is anticipated TO will contract with Culpepper and Terpening, Inc. to collect traffic counts (as has been done in past years). Scheduling of counts, recounts, and supervision as well as administration of the subconsultant contract will be performed by TO as part of this subtask.					8						8	\$ 1,098.88	
Task 2 Traffic Count Data Collection: Traffic count data collection is to be performed at 124 locations, consistent with the established traffic count procedures. Specific locations will be identified and approved by the TPO. At each location, the machine count data will be collected for a period of 48 hours during a "typical" weekday (Tuesday, Wednesday, and Thursday). Special care will be taken to ensure the counts are not performed during periods of non-typical vehicular patterns (i.e. when school is out, holidays, etc.). As in the past collection of traffic counts, it's necessary to note that the count locations may need to be adjusted/revised during the data collection process. Such adjustments will be documented for reference and future use.					4				8		12	\$ 1,008.24	
Task 3 Upload and Q/C Traffic Counts: As TO receives 2016 counts from the subconsultant, the counts will be uploaded into the TCDMS web application by TO's Database Administrator. Using the TCDMS Web Application, TO staff will process, review, and Q/C each individual traffic count within five (5) business days of receiving the count and will notify the subconsultant representative via email of any traffic counts which do not meet specifications and need to be recounted.		2	4		6				92		100	\$ 7,064.20	
Total Hours:	0	2	4	0	18	0	0	0	100	0	124		
Total Labor:	\$ -	\$ 350	\$ 614	\$ -	\$ 2,472	\$ -	\$ -	\$ -	\$ 5,735	\$ -	\$ 9,171	\$ 9,171.32	
Direct Expenses	Units	Rate	Total									Total Labor:	\$ 9,171.32
2016 Traffic Counts Data Collection - Volume Counts	103	\$190	\$ 19,570									Total Expenses:	\$ 24,400.00
2016 Traffic Counts Data Collection - Classification Counts	21	\$230	\$ 4,830									TOTAL COSTS:	\$ 33,571.32
Total			\$ 24,400										

Summary of 2016 Traffic Count Selection Criteria and Counts

Count Category	Criteria	Volume Counts	Class Counts	Total Counts
1	v/c ratio greater than .65	40	3	43
2	v/c ratio greater than 0.50 and last count 2014 or older	0	0	0
3	v/c ratio greater than 0.30 and last count 2013 or older	63	18	81
4	traffic count selected for consistency with above counts	0	0	0
	Total All Counts	103	21	124

St. Lucie TPO - Tentative 2016 Traffic Count Locations

Station ID	Location	Jurisdiction	Last Count	Daily Capacity	AAAT	Estimated 2015 AADT	Class Count?	v/c	Count Category
624	BECKER RD 1.07 MILES EAST OF VILLAGE PKWY	COUNTY	2015	15200	20000	20000	NO	1.32	1
625	BECKER RD 0.48 MILES EAST OF ROSSER BLVD	PORT SAINT LUCIE	2015	15200	20000	20000	NO	1.32	1
134	MIDWAY RD 560 FEET WEST OF SELVITZ RD	PORT SAINT LUCIE	2015	15200	19000	19000	NO	1.25	1
228	MIDWAY RD 600 FEET WEST OF EAST TORINO BLVD	PORT SAINT LUCIE	2015	15200	19000	19000	NO	1.25	1
130	MIDWAY RD 750 FEET WEST OF SUNRISE BLVD	COUNTY	2015	15200	18500	18500	NO	1.22	1
132	MIDWAY RD 685 FEET WEST OF 25TH ST	COUNTY	2015	15200	17000	17000	NO	1.12	1
234	CALIFORNIA BLVD 0.2 MILES SOUTH OF ST LUCIE WEST BLVD	PORT SAINT LUCIE	2015	15200	17000	17000	NO	1.12	1
315	FLORESTA DR 720 FEET NORTH OF PT ST LUCIE BLVD	PORT SAINT LUCIE	2015	15200	17000	17000	NO	1.12	1
318	ST LUCIE WEST BLVD 900 FEET EAST OF PEACOCK LOOP	PORT SAINT LUCIE	2015	33200	35000	35000	NO	1.05	1
242	MIDWAY RD 365 FEET WEST OF US-1	COUNTY	2015	15200	16000	16000	NO	1.05	1
328	WALTON RD 560 FEET EAST OF VILLAGE GREEN DR	PORT SAINT LUCIE	2015	15200	16000	16000	NO	1.05	1
148	PRIMA VISTA BLVD 260 FEET WEST OF RIO MAR DR	PORT SAINT LUCIE	2015	33200	34000	34000	NO	1.02	1
110	EDWARDS RD 200 FEET WEST OF 25TH ST	FORT PIERCE	2015	15200	15500	15500	NO	1.02	1
628	BECKER RD 0.3 MILES WEST OF FLORESTA DR	PORT SAINT LUCIE	2015	15200	13500	13500	NO	0.89	1
702	SAVONA BLVD 720 FEET NORTH OF GATLIN BLVD	PORT SAINT LUCIE	2015	15200	13500	13500	NO	0.89	1
316	ST LUCIE WEST BLVD 0.28 MILES EAST OF CASHMERE BLVD	PORT SAINT LUCIE	2015	50300	44500	44500	NO	0.88	1
339	WESTMORELAND BLVD 315 FEET SOUTH OF PT ST LUCIE BLVD	PORT SAINT LUCIE	2015	16000	14000	14000	NO	0.88	1
715	US-1 370 FEET SOUTH OF AVENUE H	FORT PIERCE	2015	33200	29000	29000	NO	0.87	1
309	BAYSHORE BLVD 470 FEET NORTH OF PT ST LUCIE BLVD	PORT SAINT LUCIE	2015	33200	28500	28500	NO	0.86	1
697	PT ST LUCIE BLVD 0.2 MILES SOUTH-WEST O GATLIN BLVD	PORT SAINT LUCIE	2015	33200	28500	28500	NO	0.86	1
337	SOUTHBEND BLVD 800 FEET SOUTH OF FLORESTA DR	PORT SAINT LUCIE	2015	15200	13000	13000	NO	0.86	1
636	CALIFORNIA BLVD 400 FEET SOUTH OF CROSSTOWN PKWY	PORT SAINT LUCIE	2015	15200	13000	13000	NO	0.86	1
231	CASHMERE BLVD 960 FEET NORTH OF ST LUCIE WEST BLVD	PORT SAINT LUCIE	2015	15200	12500	12500	NO	0.82	1
237	EAST TORINO PKWY 640 FEET SOUTH OF MIDWAY RD	PORT SAINT LUCIE	2015	15200	12500	12500	NO	0.82	1
622	BAYSHORE BLVD 400 FEET WEST OF SELVITZ RD	PORT SAINT LUCIE	2015	15200	12500	12500	NO	0.82	1
626	BECKER RD 680 FEET EAST OF SAVONA BLVD	PORT SAINT LUCIE	2015	15200	12500	12500	NO	0.82	1
634	CALIFORNIA BLVD 275 FEET EAST OF SAVONA BLVD	PORT SAINT LUCIE	2015	15200	12500	12500	NO	0.82	1
109	FLORESTA DR 0.5 MILES SOUTH-EAST O PRIMA VISTA BLVD	PORT SAINT LUCIE	2015	15200	12000	12000	NO	0.79	1
659	DARWIN BLVD 685 FEET EAST OF PT ST LUCIE BLVD	PORT SAINT LUCIE	2015	15200	12000	12000	NO	0.79	1
698	PT ST LUCIE BLVD 575 FEET WEST OF DEL RIO BLVD	PORT SAINT LUCIE	2015	50300	39000	39000	NO	0.78	1
240	OLEANDER AVE 900 FEET SOUTH OF EDWARDS RD	FORT PIERCE	2015	15200	11500	11500	NO	0.76	1
627	BECKER RD 0.93 MILES EAST OF DARWIN BLVD	PORT SAINT LUCIE	2015	15200	11500	11500	NO	0.76	1
704	SELVITZ RD 700 FEET SOUTH OF EDWARDS RD	FORT PIERCE	2015	15200	11500	11500	NO	0.76	1
146	PRIMA VISTA BLVD 400 FEET WEST OF US-1	PORT SAINT LUCIE	2014	33200	24500	29500	YES	0.74	1
317	FLORESTA DR 530 FEET SOUTH OF PT ST LUCIE BLVD	PORT SAINT LUCIE	2015	15200	11000	11000	NO	0.72	1
635	CALIFORNIA BLVD 300 FEET SOUTH OF DEL RIO BLVD	PORT SAINT LUCIE	2015	15200	11000	11000	NO	0.72	1
307	BAYSHORE BLVD 155 FEET NORTH OF CROSSTOWN PKWY	PORT SAINT LUCIE	2015	33200	23000	23000	NO	0.69	1
712	TRADITION PKWY 0.45 MILES EAST OF VILLAGE PKWY	COUNTY	2015	33200	23000	23000	NO	0.69	1
232	CASHMERE BLVD 0.3 MILES SOUTH OF ST LUCIE WEST BLVD	PORT SAINT LUCIE	2015	15200	10500	10500	YES	0.69	1
505	OLEANDER AVE 215 FEET SOUTH OF VIRGINIA AVE	FORT PIERCE	2015	15200	10500	10500	NO	0.69	1
637	CALIFORNIA BLVD 290 FEET NORTH OF CASHMERE BLVD	PORT SAINT LUCIE	2015	15200	10500	10500	NO	0.69	1
529	25TH ST 310 FEET SOUTH OF VIRGINIA AVE	FORT PIERCE	2015	33200	22000	22000	NO	0.66	1
152	ST LUCIE WEST BLVD 135 FEET WEST OF I-95 RAMPS	PORT SAINT LUCIE	2015	15200	10000	10000	YES	0.66	1
631	C AVENUE 380 FEET EAST OF 13TH ST	FORT PIERCE	2011	15200	350	350	NO	0.02	3
639	CAMEO BLVD 880 FEET SOUTH OF CROSSTOWN PKWY	PORT SAINT LUCIE	2013	15200	7500	7800	NO	0.49	3
703	SELVITZ RD 0.23 MILES NORTH OF MIDWAY RD	COUNTY	2013	15200	7500	8100	NO	0.49	3
133	JENKINS RD 0.25 MILES SOUTH OF OKEECHOBEE RD	FORT PIERCE	2013	15200	7400	7200	NO	0.49	3
665	DELAWARE AVE 425 FEET WEST OF US-1	FORT PIERCE	2013	15200	7400	7800	NO	0.49	3
694	PEACOCK LOOP 730 FEET WEST OF CALIFORNIA BLVD	PORT SAINT LUCIE	2013	15200	7400	8300	NO	0.49	3
322	TIFFANY DR 340 FEET EAST OF US-1	PORT SAINT LUCIE	2013	33200	16000	14500	NO	0.48	3
610	25TH ST 150 FEET NORTH OF ORANGE AVE	FORT PIERCE	2013	33200	15500	14500	YES	0.47	3
135	JOHNSTON RD 770 FEET NORTH OF INDRIO RD	COUNTY	2013	15200	6900	6800	NO	0.45	3
159	25TH ST 315 FEET SOUTH OF EDWARDS RD	FORT PIERCE	2013	33200	15000	20000	YES	0.45	3
527	13TH ST SOUTH 325 FEET NORTH OF VIRGINIA AVE	FORT PIERCE	2013	15200	6700	6900	NO	0.44	3
166	MARIPOSA AVE 415 FEET EAST OF LENNARD RD	PORT SAINT LUCIE	2013	15200	6400	7100	NO	0.42	3
607	17TH ST 200 FEET SOUTH OF ORANGE AVE	FORT PIERCE	2013	15200	6400	6600	NO	0.42	3
139	OLEANDER AVE 510 FEET NORTH OF MIDWAY RD	COUNTY	2013	15200	6300	7500	NO	0.41	3
612	35TH ST 280 FEET NORTH OF CORTEZ BLVD	FORT PIERCE	2013	15200	6300	6900	NO	0.41	3
615	ANGLE RD 370 FEET NORTH-WEST OF AVENUE Q	COUNTY	2013	15200	6300	6100	YES	0.41	3
511	SUNRISE BLVD 520 FEET SOUTH OF VIRGINIA AVE	FORT PIERCE	2013	15200	6200	5800	NO	0.41	3
115	GLADES CUT-OFF RD 320 FEET NORTH-EAST OF MIDWAY RD	PORT SAINT LUCIE	2013	15200	6100	6800	NO	0.40	3
147	RIO MAR DR 150 FEET NORTH OF PRIMA VISTA BLVD	PORT SAINT LUCIE	2013	15200	5900	5400	NO	0.39	3
611	33RD 460 FEET NORTH OF OKEECHOBEE RD	FORT PIERCE	2013	15200	5700	5200	YES	0.38	3

690	OKEECHOBEE RD 610 FEET SOUTH-WEST OF GEORGIA AVE	FORT PIERCE	2013	33200	12000	11500	NO	0.36	3
114	INDRIO RD 0.25 MILES EAST OF KINGS HWY	COUNTY	2013	15200	5300	5500	NO	0.35	3
127	INDIAN RIVER DR 2.75 MILES SOUTH OF WALTON RD	COUNTY	2013	15200	5300	4800	NO	0.35	3
158	WEATHERBEE RD 525 FEET EAST OF US-1	COUNTY	2013	15200	5300	5700	NO	0.35	3
654	CROSSTOWN PKWY 0.25 MILES EAST OF CAMEO BLVD	PORT SAINT LUCIE	2013	50300	17500	16000	YES	0.35	3
106	EASY ST 800 FEET EAST OF US-1	COUNTY	2013	15200	5200	10500	NO	0.34	3
688	OKEECHOBEE RD 230 FEET NORTH-EAST OF VIRGINIA AVE	FORT PIERCE	2013	33200	11000	9300	NO	0.33	3
689	OKEECHOBEE RD 360 FEET NORTH-EAST OF 35TH ST	FORT PIERCE	2013	33200	11000	8300	NO	0.33	3
113	GLADES CUT-OFF RD 500 FEET SOUTH-WEST OF SELVITZ RD	COUNTY	2013	15200	4900	5000	NO	0.32	3
163	AVENUE D 150 FEET EAST OF 25TH ST	FORT PIERCE	2013	15200	4900	4600	NO	0.32	3
700	Q AVENUE 860 FEET WEST OF 25TH ST	FORT PIERCE	2013	15200	4800	5000	NO	0.32	3
509	SUNRISE BLVD 270 FEET NORTH OF VIRGINIA AVE	FORT PIERCE	2013	15200	4600	4500	NO	0.30	3
638	CAMEO BLVD 550 FEET NORTH OF PT ST LUCIE BLVD	PORT SAINT LUCIE	2013	15200	4600	4600	NO	0.30	3
305	BAYSHORE BLVD 290 FEET NORTH OF PRIMA VISTA BLVD	PORT SAINT LUCIE	2013	33200	10000	15500	NO	0.30	3
653	CROSSTOWN PKWY 330 FEET WEST OF CAMEO BLVD	PORT SAINT LUCIE	2013	50300	15000	14000	YES	0.30	3
306	LYNGATE 500 FEET WEST OF US-1	PORT SAINT LUCIE	2013	33200	9900	10500	NO	0.30	3
663	DELAWARE AVE 480 FEET WEST OF 13TH ST	FORT PIERCE	2013	33200	9700	8800	NO	0.29	3
331	MORNINGSIDE 0.53 MILES NORTH OF PT ST LUCIE BLVD	PORT SAINT LUCIE	2013	15200	4400	5000	NO	0.29	3
621	BAYSHORE BLVD 300 FEET SOUTH-EAST OF PT ST LUCIE BLVD	PORT SAINT LUCIE	2013	15200	4400	3800	NO	0.29	3
658	CROSSTOWN PKWY 345 FEET WEST OF FLORESTA DR	PORT SAINT LUCIE	2013	15200	4400	4700	YES	0.29	3
660	DEL RIO BLVD 430 FEET EAST OF CASHMERE BLVD	PORT SAINT LUCIE	2013	15200	4300	2200	NO	0.28	3
660	DEL RIO BLVD 430 FEET EAST OF CASHMERE BLVD	PORT SAINT LUCIE	2013	15200	4300	2200	NO	0.28	3
651	CROSSTOWN PKWY 0.55 MILES WEST OF CALIFORNIA BLVD	PORT SAINT LUCIE	2013	50300	14000	14500	YES	0.28	3
613	35TH ST 510 FEET NORTH OF VIRGINIA AVE	FORT PIERCE	2013	15200	4200	4300	NO	0.28	3
646	COMMERCE CENTER DR 890 FEET NORTH-EAST OF ST LUCIE WEST BLVD	PORT SAINT LUCIE	2013	15200	4200	4600	NO	0.28	3
616	ANGLE RD 500 FEET EAST OF KINGS HWY	COUNTY	2013	15200	4100	4000	YES	0.27	3
667	GEORGE AVE 500 FEET WEST OF 17TH ST	FORT PIERCE	2013	15200	4100	4200	NO	0.27	3
167	MARIPOSA AVE 465 FEET WEST OF LENNARD RD	PORT SAINT LUCIE	2013	33200	8900	9200	NO	0.27	3
501	INDIAN RIVER DR 650 FEET NORTH-WEST OF SAVANNAH RD	FORT PIERCE	2013	15200	4000	3300	NO	0.26	3
652	CROSSTOWN PKWY 0.2 MILES EAST OF CALIFORNIA BLVD	PORT SAINT LUCIE	2013	50300	13000	12500	YES	0.26	3
162	AVENUE D 175 FEET EAST OF 17TH ST	FORT PIERCE	2013	15200	3900	3800	YES	0.26	3
677	KIRBY LOOP RD 950 FEET WEST OF 35TH ST	FORT PIERCE	2013	15200	3900	4500	NO	0.26	3
161	AVENUE D 100 FEET EAST OF 13TH ST	FORT PIERCE	2013	15200	3800	3200	YES	0.25	3
125	INDIAN RIVER DR 300 FEET NORTH OF WALTON RD	PORT SAINT LUCIE	2013	15200	3700	4200	NO	0.24	3
153	SUNRISE BLVD 300 FEET SOUTH OF EDWARDS RD	FORT PIERCE	2013	15200	3600	4000	NO	0.24	3
603	7TH ST 100 FEET NORTH OF ORANGE AVE	FORT PIERCE	2013	15200	3600	3800	NO	0.24	3
679	LENNARD RD 460 FEET NORTH OF WALTON RD	PORT SAINT LUCIE	2013	15200	3600	3300	NO	0.24	3
720	VILLAGE PKWY 520 FEET SOUTH OF CROSSTOWN PKWY	PORT SAINT LUCIE	2013	33200	7700	9200	NO	0.23	3
608	17TH ST 250 FEET NORTH OF AVENUE D	FORT PIERCE	2013	15200	3500	3200	NO	0.23	3
671	HILLMOOR DR 430 FEET SOUTH-EAST OF TIFFANY AVE	PORT SAINT LUCIE	2013	15200	3500	3200	NO	0.23	3
644	CITRUS AVE 125 FEET WEST OF INDIAN RIVER DR	FORT PIERCE	2013	15200	3400	2700	NO	0.22	3
655	CROSSTOWN PKWY 675 FEET WEST OF AIROSO BLVD	PORT SAINT LUCIE	2013	50300	11000	10000	YES	0.22	3
164	AVENUE D 160 FEET WEST OF 25TH ST	FORT PIERCE	2013	15200	3300	3700	NO	0.22	3
155	SUNRISE BLVD 790 FEET SOUTH OF BELL AVE	FORT PIERCE	2013	15200	3100	3800	NO	0.20	3
620	AVENUE I 240 FEET WEST OF 17TH ST	FORT PIERCE	2013	15200	3000	3100	NO	0.20	3
701	Q AVENUE 660 FEET EAST OF 25TH ST	FORT PIERCE	2013	15200	3000	2600	NO	0.20	3
617	ANGLE RD 730 FEET WEST OF KINGS HWY	COUNTY	2013	15200	2800	2900	YES	0.18	3
323	LENNARD RD 300 FEET SOUTH OF WALTON RD	PORT SAINT LUCIE	2013	33200	6000	4800	NO	0.18	3
119	GLADES CUT-OFF RD 0.5 MILES SOUTH-WEST O COMMERCIAL CENTER D	PORT SAINT LUCIE	2013	15200	2700	2800	NO	0.18	3
650	CROSSTOWN PKWY 200 FEET EAST OF COMMERCIAL CENTER D	PORT SAINT LUCIE	2013	50300	8900	11500	YES	0.18	3
160	AVENUE D 125 FEET EAST OF 7TH ST	FORT PIERCE	2013	15200	2600	2800	NO	0.17	3
606	17TH ST 190 FEET SOUTH OF DELAWARE AVE	FORT PIERCE	2013	15200	2500	2600	NO	0.16	3
227	OLD DIXIE HWY 0.2 MILES NORTH OF ST LUCIE BLVD	COUNTY	2013	15200	2300	1800	NO	0.15	3
614	53RD ST 260 FEET NORTH OF ANGLE RD	COUNTY	2013	15200	2300	2400	NO	0.15	3
656	CROSSTOWN PKWY 0.4 MILES EAST OF AIROSO BLVD	PORT SAINT LUCIE	2013	50300	7200	7300	YES	0.14	3
209	PAAR DR 660 FEET WEST OF DARWIN BLVD	PORT SAINT LUCIE	2013	15200	2000	650	NO	0.13	3
674	JOHNSTON RD 0.25 MILES NORTH OF ANGLE RD	COUNTY	2013	15200	2000	2200	NO	0.13	3
673	JENNINGS RD 710 FEET EAST OF US-1	PORT SAINT LUCIE	2013	33200	4000	3700	YES	0.12	3
662	DELAWARE AVE 600 FEET WEST OF 33RD ST	FORT PIERCE	2013	15200	1600	1100	NO	0.11	3
657	CROSSTOWN PKWY 0.65 MILES WEST OF FLORESTA DR	PORT SAINT LUCIE	2013	50300	5200	5500	YES	0.10	3
672	INDRIO RD 470 FEET EAST OF US-1	COUNTY	2013	15200	950	850	NO	0.06	3

AGENDA ITEM SUMMARY

Board/Committee: St. Lucie TPO Board

Meeting Date: October 19, 2016

Item Number: 9a

Item Title: Executive Director Employment Agreement Addendum

Item Origination: TPO Executive Committee

UPWP Reference: Task 1.1: Program Management

Requested Action: Approve the addendum, approve with conditions, or do not approve.

Staff Recommendation: The Executive Committee recommends the TPO Board approve the attached Fifth Addendum to the Executive Director's Employment Agreement, and authorize the Chair to sign the Fifth Addendum.

Attachments

- Staff Report
- Fifth Amendment to St. Lucie Metropolitan Planning Organization Executive Director Employment Agreement

MEMORANDUM

TO: St. Lucie TPO Board

FROM: Heather Young
St. Lucie TPO Attorney

DATE: August 3, 2016

SUBJECT: **Executive Director's Performance Review** – Fifth
Addendum to Employment Agreement

BACKGROUND

The TPO typically reviews the performance of its Executive Director after the conclusion of each fiscal year. The TPO Executive Director most recently received a performance review at the TPO Board Meeting in August 2015 after the conclusion of FY 2014/15. The average of the performance reviews for FY2014/15 was 19 out of a possible 24 points.

As FY 2015/16 has recently concluded, a review of the Executive Director's performance for FY 2015/16 is being conducted. At its meeting on July 15, 2016, the TPO Executive Committee directed the TPO Attorney to distribute the Executive Director Performance Review Form to all of the TPO Board Members, receive the completed forms, and provide a report on the results of the review at the August 3, 2016 TPO Board meeting. In addition, the Executive Committee decided to convene immediately following the August 3, 2016 meeting to consider the FY 16/17 compensation for the TPO Executive Director based on the results of the Performance Review.

The review forms were distributed to all of the TPO Board Members prior to the August 3, 2016 meeting. Nine (9) review forms were returned with an average score of 17.11 out of a possible score of 24. Copies of the review forms were provided to the TPO Board Members with the August 3, 2016 agenda.

ANALYSIS

Following the TPO Board meeting on August 3, 2016, the Executive Committee met to review the performance reviews. Following discussion, the Executive Committee voted to recommend a three percent (3%) salary increase to one hundred eight thousand one hundred fifty and 12/100 dollars (\$108,150.12) retroactive to May 1, 2016. A copy of the proposed Fifth Addendum to the **Executive Director's Employment Agreement** which provides for the recommended increase is attached to this memorandum.

RECOMMENDATION

The Executive Committee recommends the TPO Board approve the attached Fifth Addendum **to the Executive Director's Employment Agreement, and** authorize the Chair to sign the Fifth Addendum.

**FIFTH AMENDMENT TO ST. LUCIE METROPOLITAN PLANNING
ORGANIZATION EXECUTIVE DIRECTOR EMPLOYMENT AGREEMENT**

THIS FIFTH AMENDMENT TO AGREEMENT, dated the _____ day of _____, 2016, is between the **ST. LUCIE METROPOLITAN PLANNING ORGANIZATION**, a/k/a St. Lucie Transportation Planning Organization, hereinafter referred to as the "TPO", and **PETER BUCHWALD**, hereinafter referred to as the "Executive Director."

WHEREAS, on May 6, 2008, the parties entered into a Executive Director Employment Agreement which provided for the terms and conditions of the Executive Director's employment with the TPO, hereinafter referred to as the "Agreement"; and,

WHEREAS, on October 12, 2011, the parties entered into a First Amendment to the Agreement which extended the initial term for an additional three (3) years through and including April 30, 2014; and,

WHEREAS, on October 3, 2013, the parties entered into a Second Amendment to the Agreement which provided for an increase in the salary of the Executive Director as well as a car allowance for in-county travel; and,

WHEREAS, on June 4, 2014, the parties entered into a Third Amendment to the Agreement which provided for an increase in the salary of the Executive Director and the vacation accrual rate; and,

WHEREAS, on October 7, 2015, the parties entered into a Fourth Amendment to the Agreement which provided for an increase in the salary of the Executive Director and the vacation accrual rate; and,

WHEREAS, the parties desire to further amend the Agreement to provide for a salary increase effective retroactively to May 1, 2016.

NOW, THEREFORE, in consideration of the mutual benefits received by each party the parties hereby agree to amend the Agreement as follows:

1. Section 3, Salary; Benefits, of the Agreement shall be amended to read as follows:

SECTION 3. SALARY; BENEFITS

During the first three (3) months of the Executive Director's employment, his biweekly salary will be three thousand six hundred eighty-one and 88/100 dollars (\$3,681.88). During the second three (3) months of the Executive Director's employment, his biweekly salary will be reduced to three thousand one hundred sixty-nine and 23/100 dollars (\$3,169.23) based upon an annual salary of eighty-two thousand four hundred and 00/100 dollars (\$82,400.00). Upon satisfactory completion of his evaluation period, his salary shall be increased by five percent (5%). The parties agree to reopen this section for further negotiations with regard to the Executive

Director's annual salary and benefits on or before February 1, 2012, and February 1, 2013.

Beginning with the first available payroll in October 2013 and retroactive to May 7, 2013, the Executive Director's biweekly salary shall be increased to three thousand six hundred ninety-two and 30/100 dollars (\$3,692.30) based upon an annual salary of ninety-six thousand and 00/100 dollars (\$96,000.00). Beginning with the first available payroll in October 2015 and retroactive to May 1, 2015, the Executive Director's biweekly salary shall be increased to four thousand thirty-eight and 46/100 dollars (\$4,038.46) based upon an annual salary of one hundred five thousand and 00/100 dollars (\$105,000.00). Beginning with the first available payroll in October 2016 and retroactive to May 1, 2016, the Executive Director's biweekly salary shall be increased to four thousand one hundred fifty-nine and 62/100 dollars (\$4,159.62) based upon an annual salary of one hundred eight thousand one hundred fifty and 12/100 dollars (\$108,150.12). In addition, the Executive Director shall also receive a car allowance in the amount of five hundred and 00/100 dollars (\$500.00) per month for in-county travel related to his duties pursuant to this Agreement retroactive to May 7, 2013. On or before February 1, 2014 and each subsequent February 1 during the remainder of the Agreement term, the parties agree to reopen this section for further negotiations with regard to the Executive Director's annual salary and benefits.

As further incident of his compensation hereunder, the Executive Director shall be entitled to the same rights, privileges, credits and benefits which St. Lucie County provides its employees, including health, major medical and life insurance, workers compensation insurance, retirement benefits, cell phone program, and all other aspects of and components of the County's flexible benefit plan for its employees. Effective retroactive to May 1, 2014, the Executive Director shall accrue vacation leave at the rate of one hundred sixty (160) hours per year.

2. All other terms and conditions of this Agreement, as previously amended, shall remain in full force and effect.

IN WITNESS WHEREOF, the TPO has hereunto subscribed and the Executive Director has affixed his name the date aforesaid.

ATTEST:

**ST. LUCIE COUNTY METROPOLITAN
PLANNING ORGANIZATION**

Secretary

BY: _____
Chair

**APPROVED AS TO FORM AND
CORRECTNESS:**

BY: _____
Attorney

WITNESSES:

EXECUTIVE DIRECTOR

Peter Buchwald

AGENDA ITEM SUMMARY

Board/Committee:	St. Lucie TPO Board
Meeting Date:	October 19, 2016
Item Number:	9b
Item Title:	Congestion Management Process (CMP) Major Update Scope of Work
Item Origination:	Unified Planning Work Program (UPWP)
UPWP Reference:	Task 3.4: CMP
Requested Action:	Approve the scope of work, approve with conditions, or do not approve.
Staff Recommendation:	Based on the scope, cost, and schedule being consistent with Task 3.4 of the UPWP, it is recommended that the scope of work to complete Phase I of the CMP Major Update be approved.

Attachments

- Staff Report
- CMP Major Update Phase I Scope of Work

MEMORANDUM

TO: St. Lucie TPO Board

FROM: Peter Buchwald
Executive Director

DATE: September 26, 2016

SUBJECT: Congestion Management Process (CMP) Major Update
Scope of Work

BACKGROUND

The Congestion Management Process (CMP) provides the information necessary to identify areas with congestion or safety issues and to prioritize projects which address the identified congestion and safety issues. These projects typically do not involve the widening of roadway segments and are intended to be implemented more quickly than roadway widening projects.

The primary element of the CMP is the CMP Implementation Plan that prioritizes CMP projects. The CMP projects are added to the TPO's List of Priority Projects (LOPP) for future funding considerations. CMP Box Funds in the amount of \$300,000-\$400,000 are allocated annually toward CMP projects in the LOPP.

A major update of the CMP was last completed in October 2011. Because of the small number of CMP projects remaining in the CMP Implementation Plan, the need to prepare a major update of the CMP was established in the FY 2016/17 – FY 2017/18 Unified Planning Work Program (UPWP) in Task 3.4, *Congestion Management Process (CMP)*.

ANALYSIS

The Go2040 Long Range Transportation Plan (LRTP) included a preliminary screening of congested facilities to identify potential CMP concerns that will serve as the basis for the CMP Major Update. The CMP Major Update will include analyses of safety and congestion issues including consideration of

the St. Lucie West Boulevard mid-day traffic congestion that was identified as an issue during the FY 2016/17 – FY 2017/18 UPWP Call for Projects. The update also will include redevelopment of the CMP project prioritization methodology, project development and prioritization for the CMP Implementation Plan, and redevelopment of the CMP performance measures based on the Go2040 LRTP performance measures.

The attached Scope of Work for Phase I of the CMP Major Update was prepared by Stanley Consultants, Inc. (SCI). SCI is one of the General Planning Consultants for the St. Lucie TPO and recently completed the Walton Road Multimodal Improvements Feasibility Study.

In the first phase of the CMP Major Update, a prioritized list of roadway segments and/or intersections that are experiencing congestion or safety issues will be identified for possible roadway/intersection improvement projects. CMP objectives will be identified, and performance measures will be developed based on the Go2040 LRTP performance measures to quantify the areas of concern prior to identifying the projects. A preliminary congestion management analysis will be conducted of projects identified by stakeholders, areas of safety concern listed in crash databases, and segments that are experiencing large volume to capacity ratios. In order to effectively identify areas of congestion that are concerns of the community, coordination among St. Lucie County, the City of Fort Pierce and the City of Port St. Lucie will be conducted to obtain local input and identify additional CMP projects.

A cost of \$15,000 is proposed by SCI which is within the UPWP task budget. The work effort schedule proposed by SCI is consistent with the Completion Date of April 2017 identified in the UPWP task.

RECOMMENDATION

Based on the scope, cost, and schedule being consistent with Task 3.4 of the UPWP, it is recommended that the scope of work to complete Phase I of the CMP Major Update be approved.

Congestion Management Process - Major Update Phase I

SCOPE OF WORK

PURPOSE:

The purpose of this scope is to complete the first phase of the congestion management process (CMP) major update. In this first phase of the CMP major update, a draft ranking list of roadway segments and/or intersections that are experiencing congestion or safety issues will be identified as possible roadway improvement projects along with CMP objectives and performance measures.

Background

Projects identified for the CMP major update should be ones that could improve the entire transportation system performance and reliability by reducing the adverse impacts of congestion on the roadway network in St. Lucie County. Roadway and intersection improvement projects selected through this Phase I CMP will include improvement objectives based on the Go2040 long range Transportation Plan (LRTP) objectives.

A preliminary congestion management analysis will be conducted by listing projects identified by stakeholders, areas of safety concern listed in crash databases, and segments that are experiencing large volume to capacity ratios. The preliminary analysis will CMP objectives and develop performance measures to rate areas of concern with a quantity measurement prior to identifying projects.

SCOPE OF SERVICES:

The following requirements and tasks comprise the services that the CONSULTANT will employ to accomplish the purpose of this work authorization for the St. Lucie TPO.

Task 1 – Review of Available Plans and Gather Data

The Consultant will conduct the following:

- With support from TPO staff, obtain high crash segment and spot location data; prepare a table of findings.
- Obtain the Traffic Counts and LOS Report (Fall 2015) data, extract the roadway segments with level of service D or worse.
- Compile a countywide list of projects with high levels of congestion and high crash frequency.
- Synthesize Go2040 goals, Objectives and performance measures.

Task 2 – Planning Analysis

The Consultant will conduct the following planning level analysis:

- Compare and modify those segments, as appropriate, identified in Task 1 which are listed as planned projects in the TIP, LRTP and the St. Lucie Advanced Transportation Management System (ATMS) Master Plan.

St. Lucie Transportation Planning Organization
Congestion Management Process - Major Update – Phase I
Stanley Consultants, Inc.
September 19, 2016

- A draft CMP technical memo (defined in Task 4 below) will include this list of deficient roadway segments and intersection as potential CMP projects and CMP objectives and performance measures.

Task 3 – Management, Meetings and Coordination

In order to effectively identify areas of congestion that are concerns of the community, coordination among the St. Lucie County, the City of Fort Pierce and the City of Port St. Lucie will be conducted to obtain local input and inclusion of additional CMP projects. There will be a total of six coordination meetings with stakeholders for this Phase.

The consultant will prepare one brief powerpoint presentation showing the draft project lists, CMP objectives and performance measures and CMP process schedule for review at the meeting.

The Consultant will attend up to:

- 1 meeting with St. Lucie County Engineering
- 1 meeting with the City of Fort Pierce
- 1 meeting with the City of Port St. Lucie.
- 3 TPO meetings
 - 1 Citizens Advisory Committee (CAC),
 - 1 Technical Advisory Committee (TAC)
 - 1 Bicycle-Pedestrian Advisory Committee (BPAC).
- Meeting notes to the file will be prepared for these meetings.

The results of the community input will be coordinates with TPO staff and South Florida Commuter Services and entered into the Draft CMP Technical Memo.

Task 4 – Technical Memo

A technical memorandum will be completed to summarize the findings, local agency input and public involvement of the Phase I CMP effort. The technical memorandum will define the CMP network, discussion from the coordination meetings, the CMP objectives and performance measures, and a draft ranking list of Phase I projects that should be further analyzed in a Phase II process of the CMP Major Update.

The technical memorandum will be a concise memorandum type of document focusing on the projects, objectives, performance measures and input from stakeholders. The memorandum will minimize CMP background discussion. The technical memorandum will be submitted once as draft and once as final to the TPO for review. One electronic copy of the final technical memo will be provided to the TPO as a deliverable.

ADDITIONAL SERVICES

During subsequent work orders, the standard CMP Major Update report will be prepared and contain additional information pertaining to the CMP background, purpose, goals, findings and CMP prioritized project list.

Additional Services will be conducted under separate work orders for services that include but not limited to: extra TPO meetings, coordination with local municipalities, safety studies, ranking and prioritizing of projects, and/or traffic operation analysis will need to be executed under a separate scope.

ESTIMATE OF WORK EFFORT AND BUDGET
General Transportation Planning Consultant Services Contract C13-07-257

Project: Congestion Management Process Major Update - Phase I
Client: St. Lucie County Transportaion Planning Organization

Consult. Name: Stanley Consultants, Inc
Consult. No.: 24972
Revised Date: 9/23/2016
Estimator: Linda Ferreira, PE

Task No.	Staff Classification	Principal Planner	Project Manager	Senior Engineer/Planner	Engineering Intern	Transportation Analyst	CAD Technician	Administrative / Clerical	Staff Hours	Salary
	Task Description	\$177.00	\$166.00	\$156.00	\$104.00	\$95.00	\$87.00	\$62.00	Per Activity	Per Activity
1	Review of Available Plans and Gather Data									
1.1	High Crash Segments and Intersections		2	8					10	1,580.00
1.2	LOS D or worse segments and intersections		2	6					8	1,268.00
1.3	Go2040 goals, objectives and performance measures		2	5					7	1,112.00
2	Planning Analysis									
2.1	Compare and modify planned projects			4					4	624.00
2.2	Define performarance objectives and measures			4					4	624.00
3	Coordination, Meetings, Documentatation									
3.1	TPO Staff Coordination			4					4	624.00
3.2	City of Port St. Lucie, City of Fort Pierce, St. Luice County			9					9	1,404.00
3.3	BPAC, CAC & TAC Meetings			9					9	1,404.00
3.4	Documentation			6						
4	Technical Memo									
4.1	Draft Technical Memo	2	4		24			4	34	3,762.00
4.2	Incorporate Committee Meeting Comments								0	0.00
4.3	Final Technical Memo	2	2		16			4	24	2,598.00
Total Hours		4	12	55	40	0	0	8	113	
Total Staff Cost		\$708.00	\$1,992.00	\$8,580.00	\$4,160.00	\$0.00	\$0.00	\$496.00		\$15,000.00

ESTIMATED TOTAL \$15,000.00

AGENDA ITEM SUMMARY

Board/Committee:	St. Lucie TPO Board
Meeting Date:	October 19, 2016
Item Number:	9c
Item Title:	Midway Road Project Development & Environment (PD&E) Study
Item Origination:	Florida Department of Transportation District 4
UPWP Reference:	Task 3.3: Transportation Improvement Program (TIP)
Requested Action:	Recommend a typical section alternative, recommend with conditions, or do not recommend.
Staff Recommendation:	It is recommended that a typical section alternative be selected by the TPO Board based on the information contained in the presentation.

Attachments

- Staff Report
- Presentation



Coco Vista Centre
466 SW Port St. Lucie Blvd, Suite 111
Port St. Lucie, Florida 34953
772-462-1593 www.stlucietpo.org

MEMORANDUM

TO: St. Lucie TPO Board

FROM: Peter Buchwald
Executive Director

DATE: September 26, 2016

SUBJECT: Midway Road Project Development & Environment
(PD&E) Study

BACKGROUND

The Florida Department of Transportation District 4 (FDOT) has been conducting the Midway Road PD&E Study for the widening of Midway Road from Glades Cut Off Road to Selvitz Road for over a year with the Public Kick-Off Meeting held on August 18, 2015. Subsequently, an Alternatives Public Meeting was conducted on June 28, 2016. FDOT requests to present the findings of the PD&E Study to date to the TPO Board for input prior to the Public Hearing which is scheduled for November 15, 2016. FDOT's consultant, Inwood Consulting Engineers, will provide the presentation.

ANALYSIS

The widening of Midway Road from Glades Cut Off Road to Selvitz Road is included in the Cost Feasible Plan of the Go2040 Long Range Transportation Plan and is the second-ranked project in the 2016/17 List of Priority Projects. The design of the project is programmed for this fiscal year in the FY 2016/17 – FY 2020/21 Transportation Improvement Program (TIP). However, no other phases are programmed yet in the TIP. The consultant's presentation will include the latest information on the status of the project, the findings of the PD&E to date, and alternatives for the typical section.

RECOMMENDATION

It is recommended that a typical section alternative be selected by the TPO Board based on the information contained in the presentation.



St. Lucie Transportation Planning Organization

Midway Road/County Road 712 Project Development and Environment Study from Glades Cut Off Road to Selvitz Road

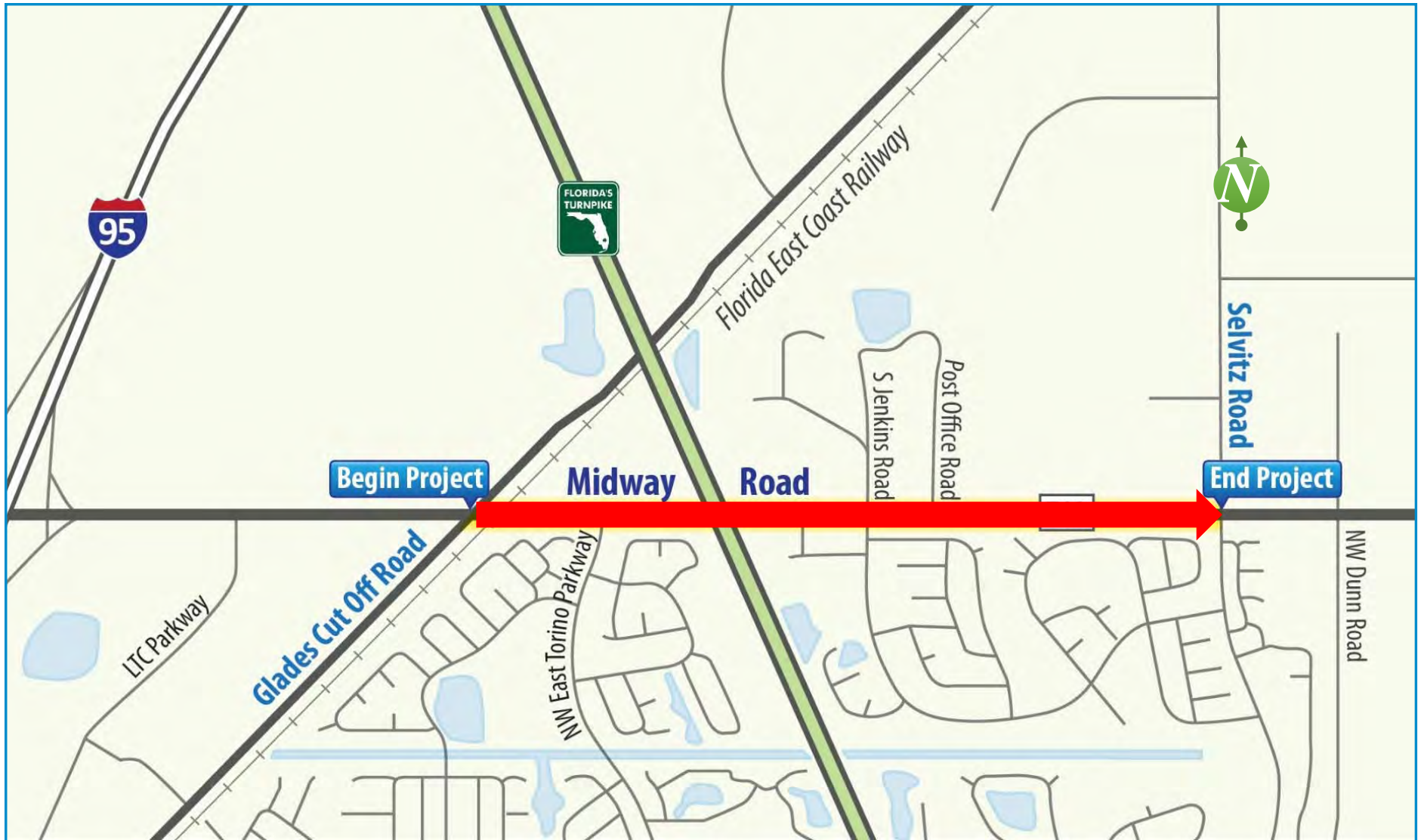
St. Lucie County

FPID: 231440-3-22-01

ETDM: 14177

October 5, 2016

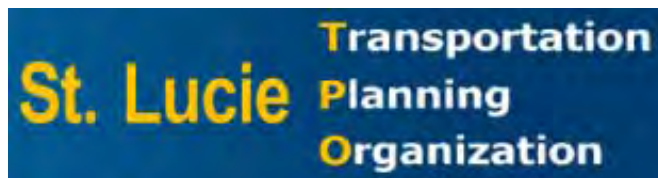
Project Location



Project Need



- Provide for existing and future traffic demands
- Improve safety
- Provide opportunities for pedestrian, bicycle, and transit facilities
- Improve freight mobility
- Enhance emergency evacuation
- Plan consistency



PD&E Study Components



- Data collection
- Engineering
- Environmental
- Public involvement

Public Involvement

- Elected and appointed officials/agencies, Public Kick-off meeting held August 18, 2015
- Alternatives public meeting held June, 28, 2016
- Public hearing scheduled for November 15, 2016
- Project website

– www.midwayrd.com

- Newsletters
- Local outreach

The screenshot shows a newsletter page from the Florida Department of Transportation (FDOT) District Four. The title is "MIDWAY ROAD/CR 712" and it includes the project description: "From Glades Cut Off Road to Selvitz Road, FDOT No. 221440-2-2-15 and 2016 No. 14177, PROJECT DEVELOPMENT AND ENVIRONMENT (PD&E) STUDY". The page is dated June 2016. It contains sections for "How Can You Get Involved?", "Why Do We Need this Study?", "Alternatives Public Workshop", "Contact Information", and "Project Schedule". The "Project Schedule" section shows a timeline from 2015 to 2017, with key events like "Project Initiation", "Public Meeting", "Environmental & Engineering Studies", "Draft Environmental Impact Statement", "Final Environmental Impact Statement", "Public Hearing", and "Construction Start". The "Community Outreach" section provides a link to the project website. The "Public Notice" section includes information about accessibility and contact details for the project manager, Julie Simpson, P.E.

The screenshot shows the Florida Department of Transportation (FDOT) website for the Midway Road Project. The page title is "Midway Road Project Development and Environment (PD&E) Study". It includes a search bar, navigation links, and contact information for the District Office in Fort Lauderdale. A prominent "EVACUATION ROUTE" sign is featured in the center. The "Study Resources" section lists documents, publications, and updates. The "Welcome" section provides an overview of the project, which is a 1.8-mile segment of Midway Road/CR 712 from Glades Cut Off Road to Selvitz Road in St. Lucie County. The "Study At-A-Glance" section includes a map of the project location and a travel update for District Four, starting in May 2015 and estimated to be completed in April 2017.



Traffic Data

- Existing Midway Road does not handle existing traffic demand
- Traffic anticipated to increase to 29,200 Annual Average Daily Traffic (AADT)
- Level of Service (LOS) F with degraded traffic operation unless capacity is increased



Alternatives Considered

- No-build alternative
- Transportation Systems Management and Operations
- Multi-modal alternatives
- Build alternatives

No-Build Alternative

- No improvements other than routine maintenance



Transportation Systems Management and Operations (TSMO)



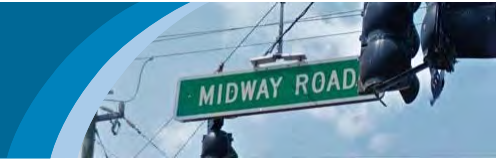
- Alternatives to maximize utilization of existing roadway
 - Traffic signal and intersection improvements
 - Access management changes
 - Transit improvements
- Stand-alone TSMO improvements do not meet the purpose and need for the project
- TSMO improvements will be incorporated into the build alternatives

Multi-Modal Alternatives

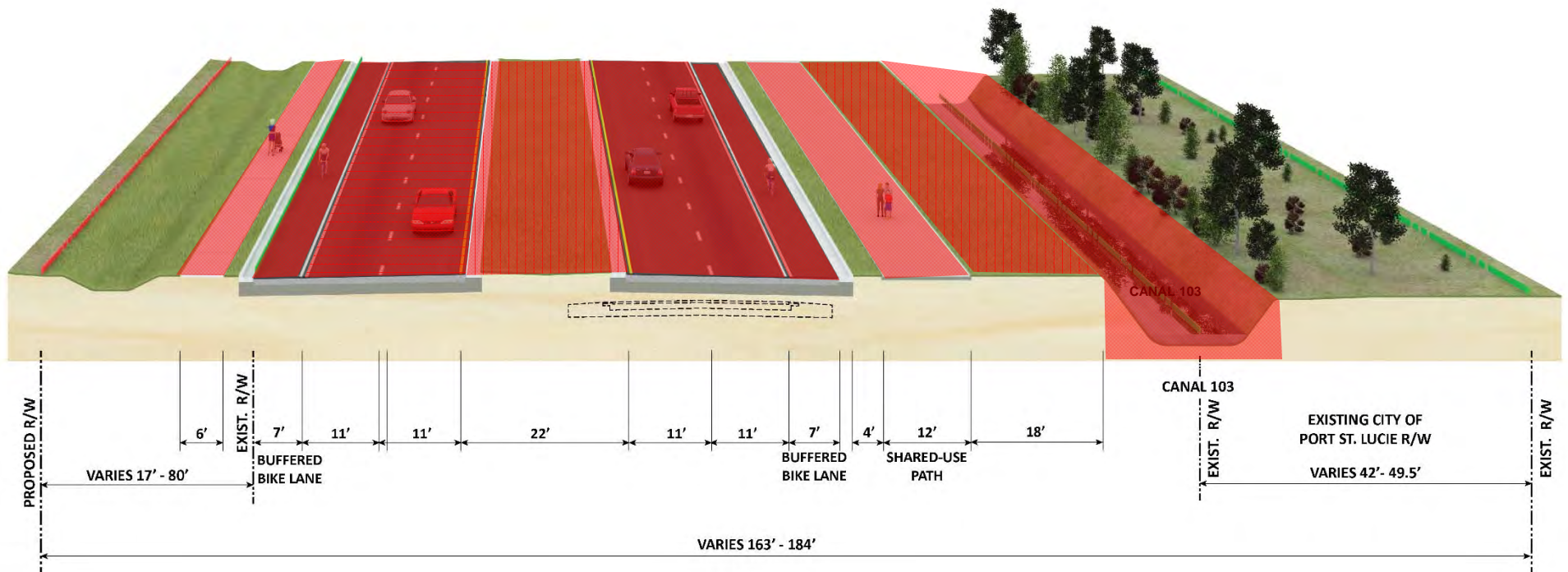
- Consists of additions to multi-modal (bus) services along corridor
- Multi-modal improvements alone do not meet the purpose and need for the project
- St. Lucie County's 2015-2024 Transit Development Plan Major Update identifies a new fixed route along Midway Road within the project limits
- Planned bus stops:
 - Eastbound: west of Milner Drive
 - Westbound: west of Selvitz Road
 - Westbound: west of New Horizons



Alternatives Analysis



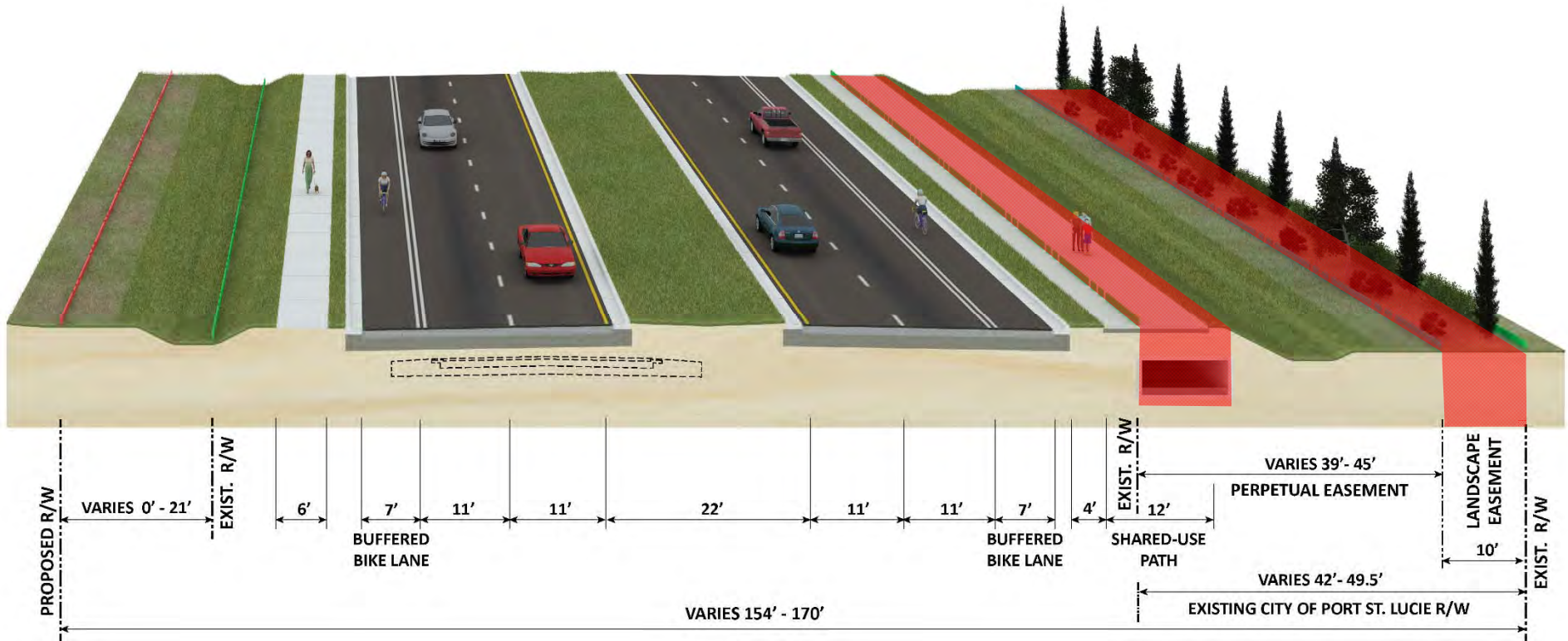
- Alternative 1 – Canal Avoidance



Alternatives Analysis



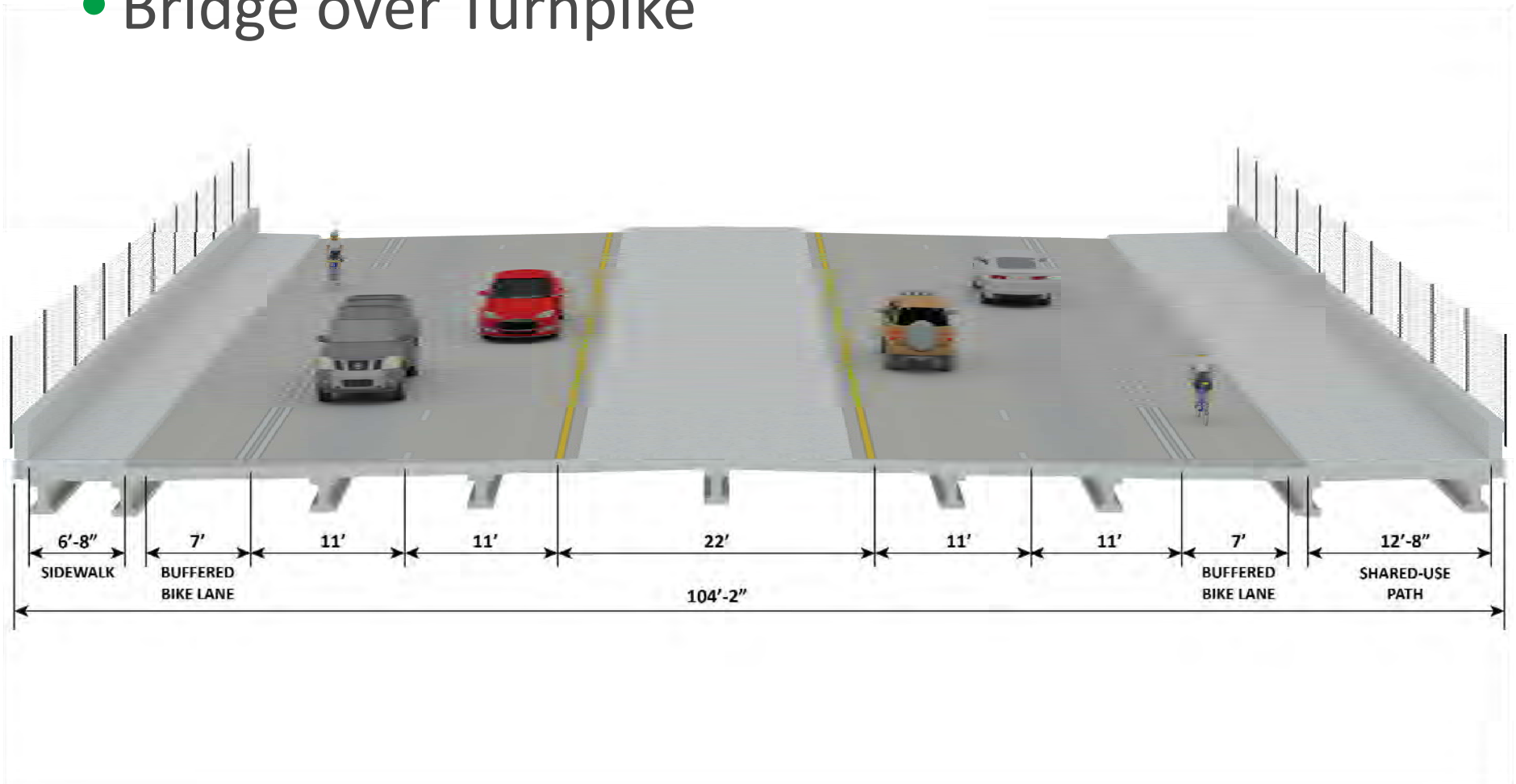
- Alternative 2 – Canal in Box Culvert



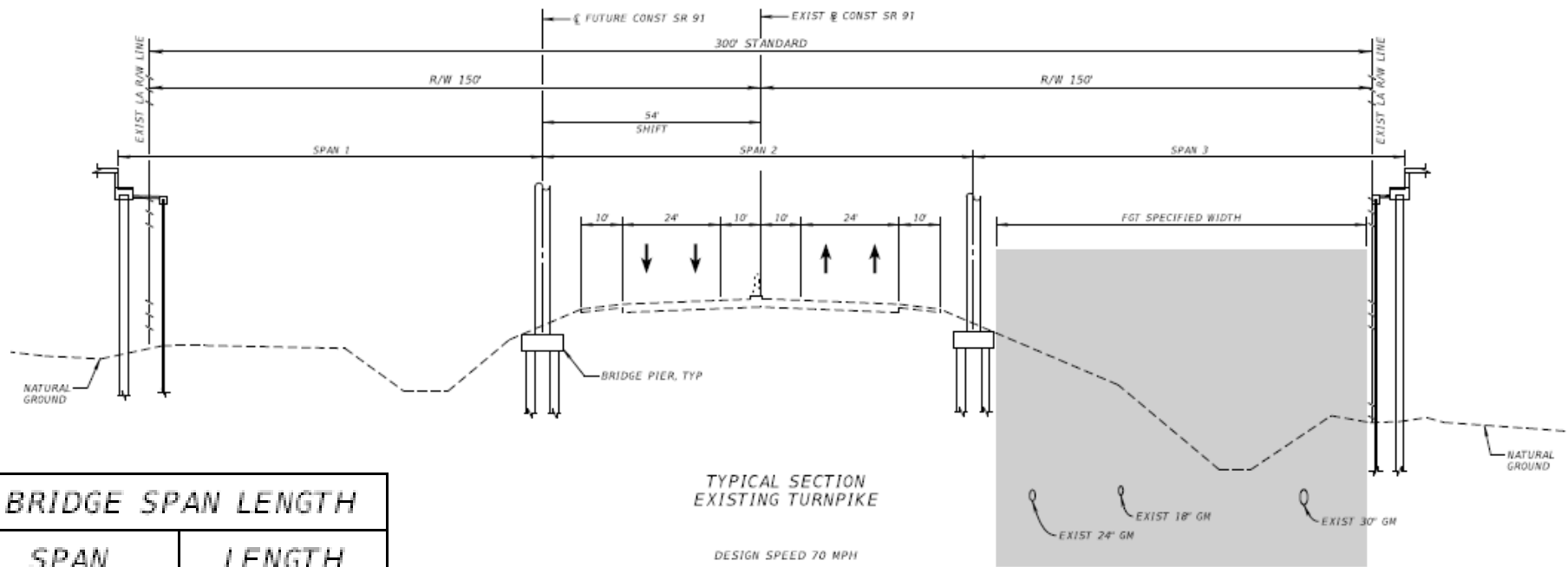
Alternatives Analysis



- Bridge over Turnpike



Turnpike Under Midway Road Typical

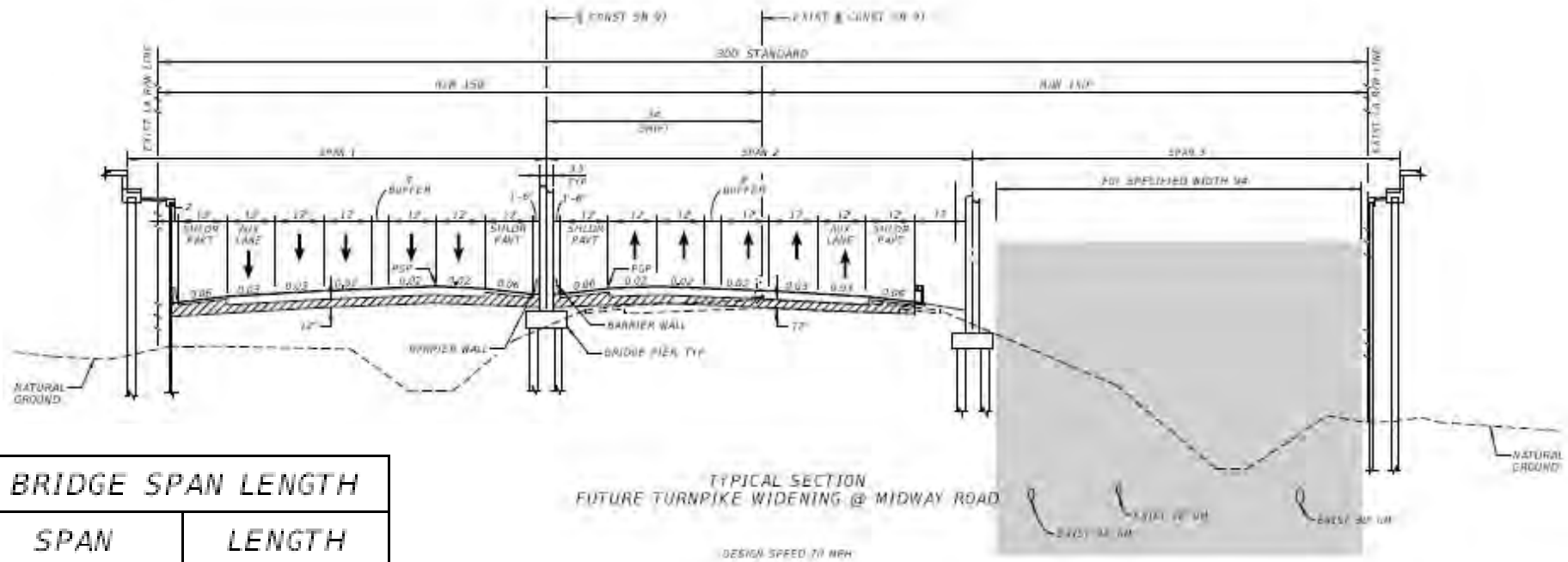


BRIDGE SPAN LENGTH	
SPAN	LENGTH
1	112
2	115
3	115

TYPICAL SECTION
EXISTING TURNPIKE
DESIGN SPEED 70 MPH

* MEASURED ALONG MIDWAY ROAD CL

Turnpike Under Midway Road Typical

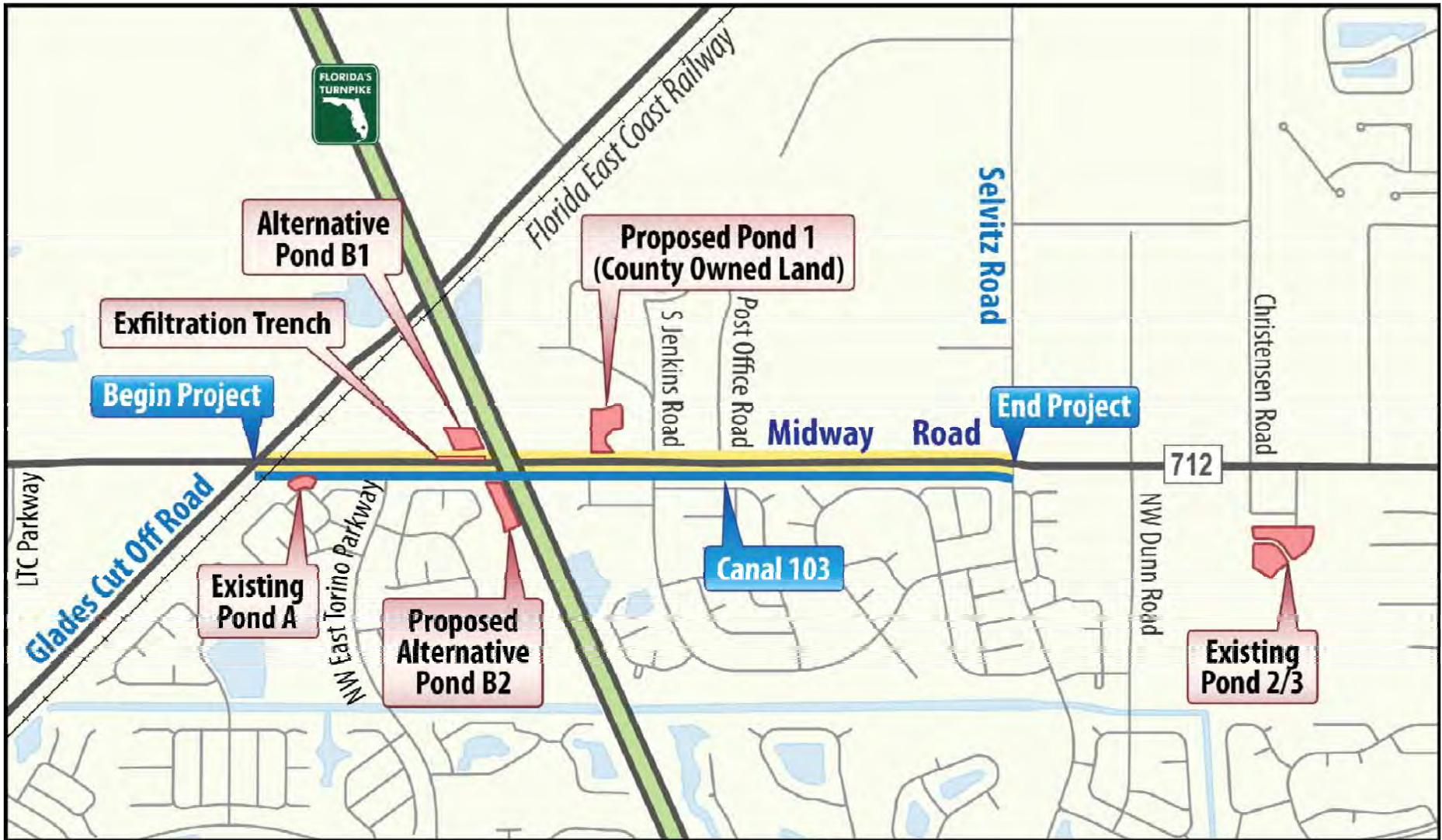


BRIDGE SPAN LENGTH	
SPAN	LENGTH
1	112
2	115
3	115

TYPICAL SECTION
 FUTURE TURNPIKE WIDENING @ MIDWAY ROAD
 DESIGN SPEED 70 MPH

* MEASURED ALONG MIDWAY ROAD C

Stormwater Treatment Ponds



Mainline Midway Road Matrix



Estimated Costs (Present Day Costs)	Alternative 1 Canal Avoidance	Alternative 2 Box Culvert
Design (10% of construction)	\$2,431,000	\$3,073,000
Road right-of-way	\$10,721,000	\$6,525,000
Wetland mitigation	\$4,000	\$1,000
Roadway and bridge construction	\$24,306,000	\$30,731,000
Reimbursable utility/railroad relocation	\$680,000	\$500,000
CEI (15% of construction)	\$3,646,000	\$4,609,650
Total Cost	\$41,788,000	\$45,440,000

Recommended – Alt. 2 – Box Culvert

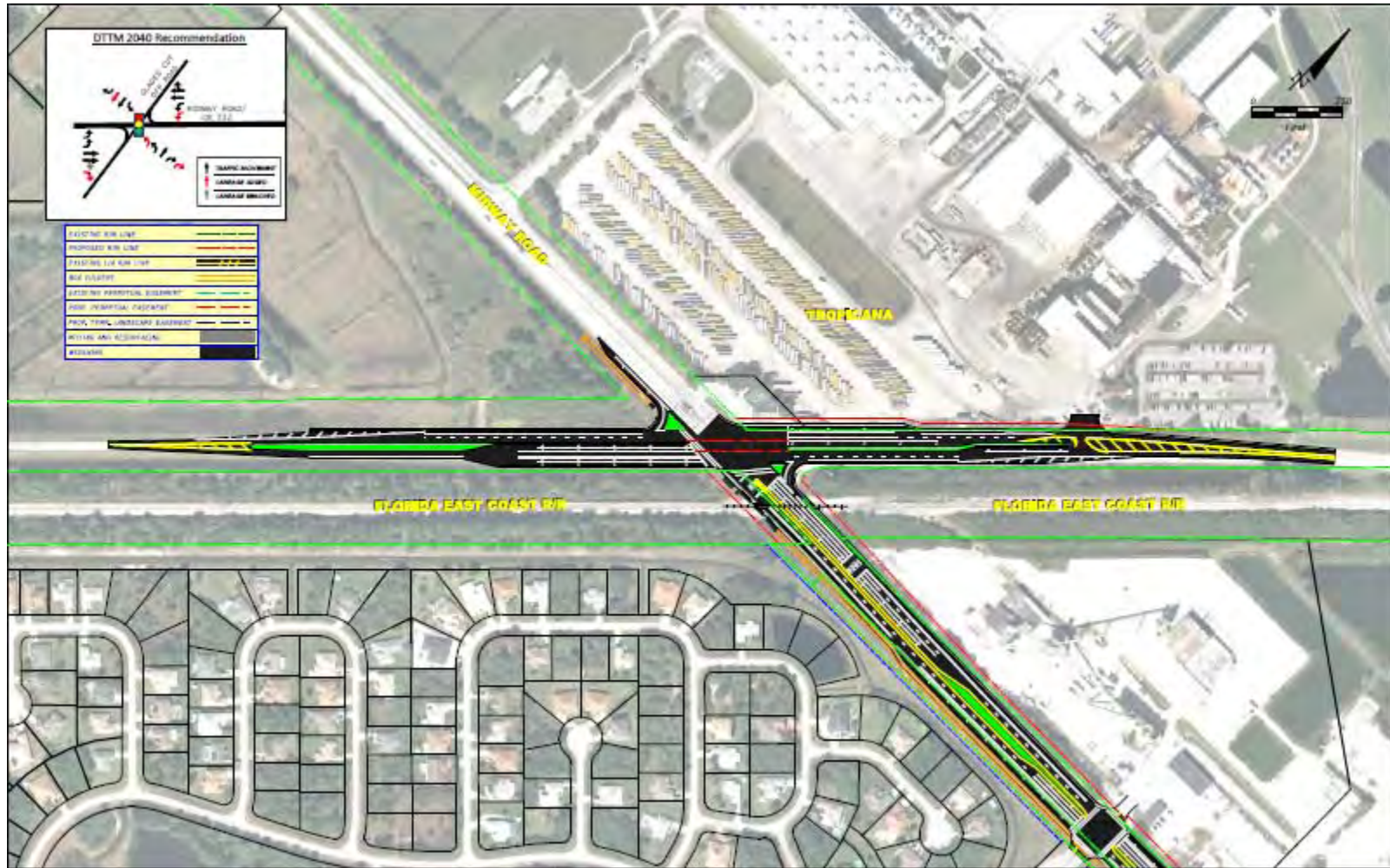


- Nine properties are impacted compared with 16 parcels for Alternative 1
- Alternative 2 preferred by representatives from St. Lucie County, Port St. Lucie, Sherriff's Office, New Horizons, and St. Lucie Public Schools
- Alternative 2 maintains the corridor look/consistency established with the Midway Road widening from Selvitz Road to 25th Street
- Lower wetland impacts
- Does not impact federal US Post Office property (FDOT does not have eminent domain)
- Glades Cut Off Road Intersection Recommended Alternative To Be Determined
- Torino Parkway intersection improvement has been added

Glades Cut Off Road Intersection Alts.



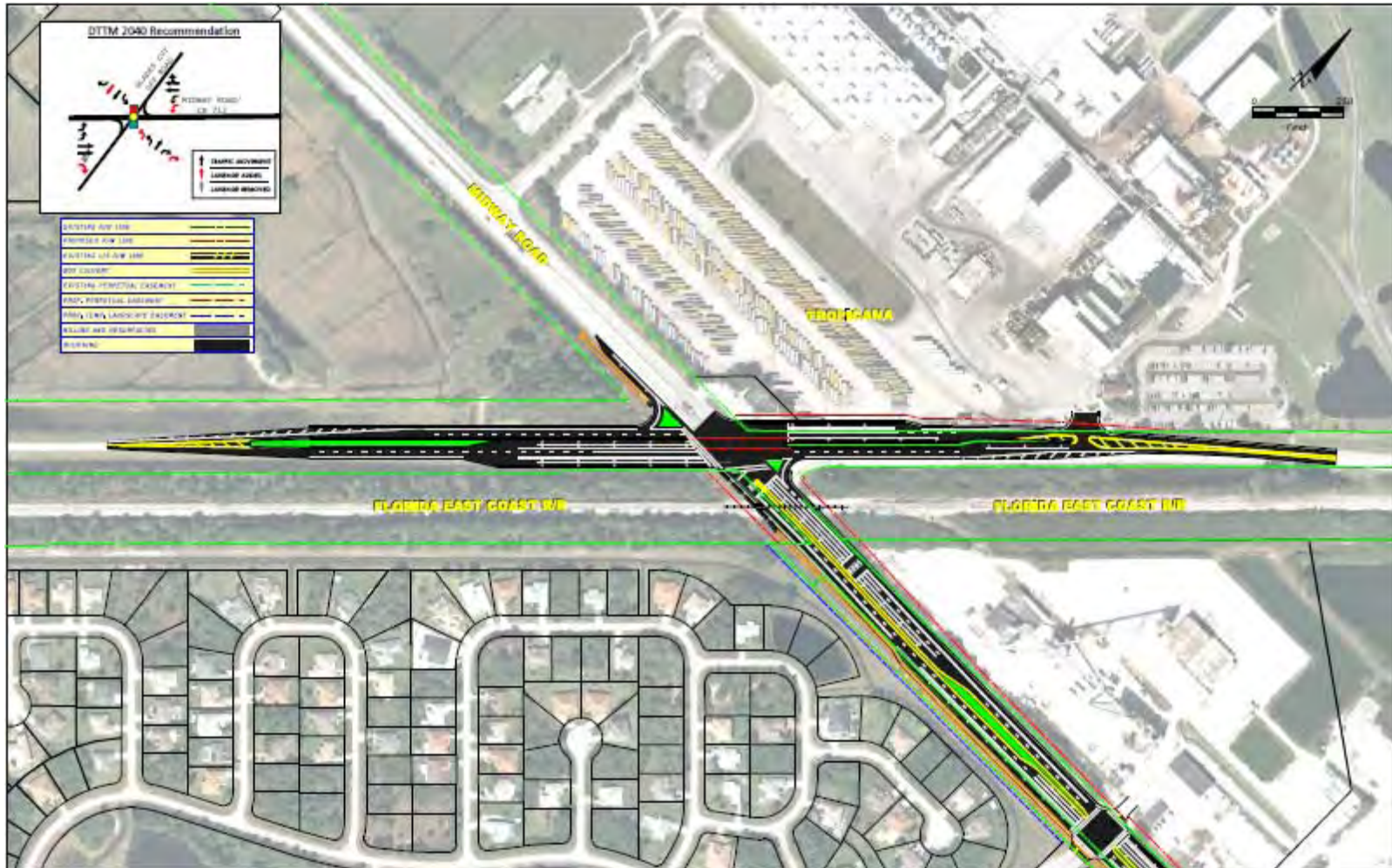
Option 1 – Meets DTTM requirements



Glades Cut Off Road Intersection Alts.



Option 1A – Meets DTTM requirements plus additional NB Thru



Glades Cut Off Road Intersection Alts.



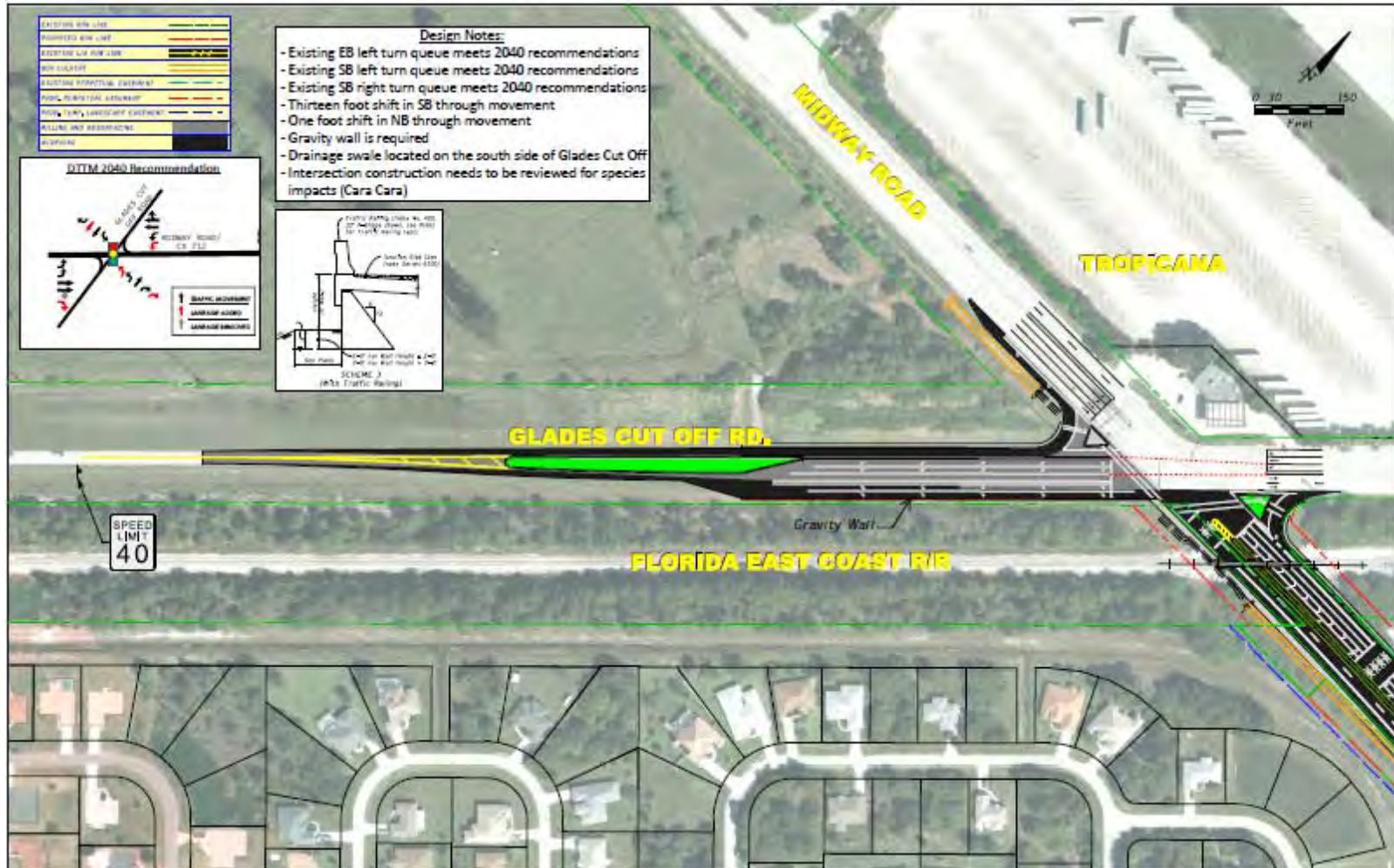
Option 2 – Reduced Growth Rate



Glades Cut Off Road Intersection Alts.



Option 3 – Partial DTTM Buildout



Glades Cut Off Road Intersection Alts.



Option 3



Option 4



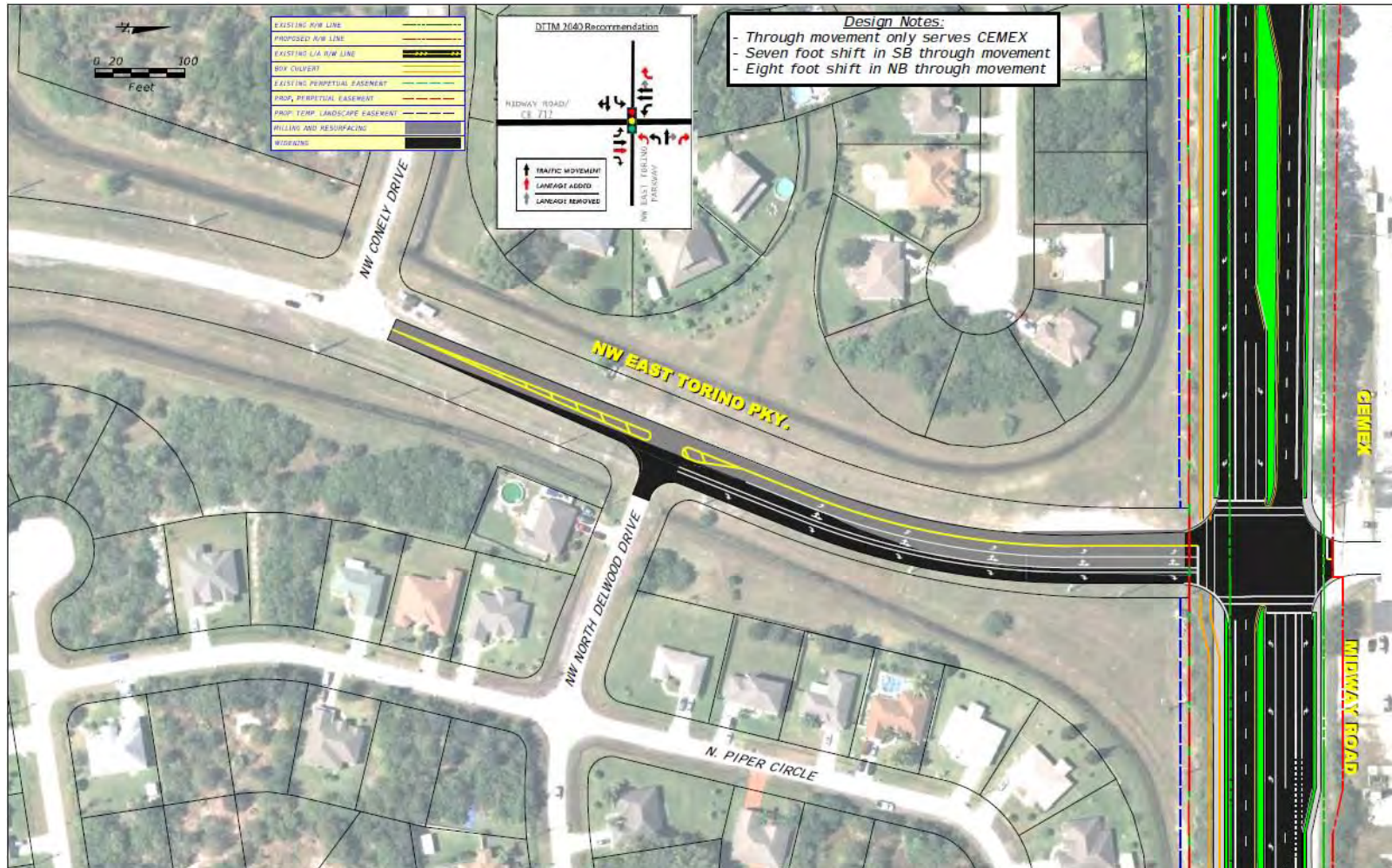
Option 5



Torino Parkway Intersection



Torino Parkway



Intersection Cost Analysis



Estimated Costs (Present Day Costs)	Glades Opt. 1	Glades Opt. 1A	Glades Opt. 2	Glades Opt. 3	Glades Opt. 4	Glades Opt. 5	Torino
Design (10% of construction)	\$375,000	\$381,000	\$43,000	\$156,000	\$116,000	\$117,000	\$30,000
Road right-of- way	\$6,107,000	\$6,622,000	\$0	\$0	\$0	\$0	\$0
Wetland mitigation	\$0	\$0	\$0	\$0	\$0	\$0	\$0
Roadway and bridge construction	\$3,752,000	\$3,806,000	\$430,000	\$1,564,000	\$1,158,000	\$1,172,000	\$295,000
Reimbursable utility/railroad relocation	\$0	\$0	\$0	\$0	\$0	\$0	\$0
CEI (15% of construction)	\$563,000	\$570,000	\$65,000	\$235,000	\$174,000	\$176,000	\$44,000
Total Cost	\$10,797,000	\$11,379,000	\$538,000	\$1,955,000	\$1,448,000	\$1,465,000	\$369,000

Interchange Feasibility Analysis

- Interchange Concept Study completed in 2005
 - No fatal flaws: No insurmountable technical issues
 - Expected revenue covered operation and maintenance but not construction costs
- New feasibility analysis
 - No fatal flaws
 - Updated traffic analysis
 - New alternatives considered
- Next steps
 - Possible Interchange PD&E Study by Turnpike



Environmental



- Social and cultural environment
- Natural environment
- Physical environment

Social and Cultural Impacts

- Socio-economic Effects

- Land use changes
- Community cohesion
- Right-of-way
- Business and Residential Relocations
- Economic
- Mobility
- Aesthetics

- Cultural Resources

- Cultural Resource Assessment Survey (CRAS) complete
 - Results: The **FEC Railroad** considered eligible for listing on the *National Register of Historic Places* and will be evaluated for a “*de minimis*” use under Section 4(f)



Natural Effects

- Wetlands and surface waters
 - Roadside ditches
 - Canal 103
 - Ponds
 - Freshwater marsh
- Evaluate alternatives to avoid and minimize adverse effects
- Unavoidable impacts will be mitigated

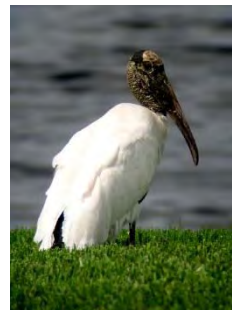


Natural Effects – Wildlife and Habitat



- Endangered Species Biological Assessment (ESBA)
 - ESBA has been approved by USFWS, but may be modified based on the Glades Cut Off Road intersection selected

Species Evaluated



- West Indian Manatee
- Sherman's Fox Squirrel
- Audubon's Crested Caracara
- Wood Stork
- Florida Scrub-Jay
- Red-cockaded Woodpecker
- Everglades Snail Kite
- Bald Eagle
- American Alligator
- Eastern Indigo Snake
- Gopher Tortoise
- Florida Pine Snake
- Several listed plant species

Physical Effects

- Physical Environment
 - Pedestrian and bicycle facilities
 - Contamination
 - Air
 - Noise
 - Construction
- Noise Study is underway
 - Future traffic noise levels
 - Ongoing – Do not anticipate noise walls being feasible
- Contamination Screening Evaluation
 - Two sites – High potential
 - One site - medium potential

Midway Road Funding



- State Transportation Improvement Program (STIP)
 - Design: \$2,150,000
 - Right-of-Way: Unfunded
 - Construction: Unfunded
- St. Lucie TPO Go2040 Cost Feasible Plan (PDC)
 - Design: \$2,150,000; Timing – Committed
 - Right-of-Way: \$3,390,000; Timing – 2020-2025
 - Construction: \$9,580,000; Timing – 2026-2030

Next Steps



- Finalize Draft PER and CE Documents
- Hold Public Hearing – November 15, 2016
- Continuous Public Involvement
- Final PD&E Study Approval – Early 2017
- Begin Design Phase – Late Spring 2017

AGENDA ITEM SUMMARY

Board/Committee:	St. Lucie TPO Board
Meeting Date:	October 19, 2016
Item Number:	9d
Item Title:	SR-A1A North Causeway Bridge Project Development & Environment (PD&E) Study
Item Origination:	Florida Department of Transportation District 4
UPWP Reference:	Task 3.3: Transportation Improvement Program (TIP)
Requested Action:	Recommend a bridge replacement alternative, recommend with conditions, or do not recommend.
Staff Recommendation:	It is recommended that a bridge replacement alternative be selected by the TPO Board based on the information contained in the presentation.

Attachments

- Staff Report
- Presentation



Coco Vista Centre
466 SW Port St. Lucie Blvd, Suite 111
Port St. Lucie, Florida 34953
772-462-1593 www.stlucietpo.org

MEMORANDUM

TO: St. Lucie TPO Board

FROM: Peter Buchwald
Executive Director

DATE: September 26, 2016

SUBJECT: SR-A1A North Causeway Bridge Project Development & Environment (PD&E) Study

BACKGROUND

The Florida Department of Transportation District 4 (FDOT) has been conducting the SR-A1A North Causeway Bridge PD&E Study for the replacement of the bridge for almost two years with the Public Kick-Off Meeting held on February 5, 2015. Subsequently, an Alternatives Public Meeting was conducted on September 10, 2015. FDOT requests to present the findings of the PD&E Study to date to the TPO Board for input prior to the Public Hearing which is scheduled for November 10, 2016. FDOT's consultant, Kimley-Horn & Associates, Inc., will provide the presentation.

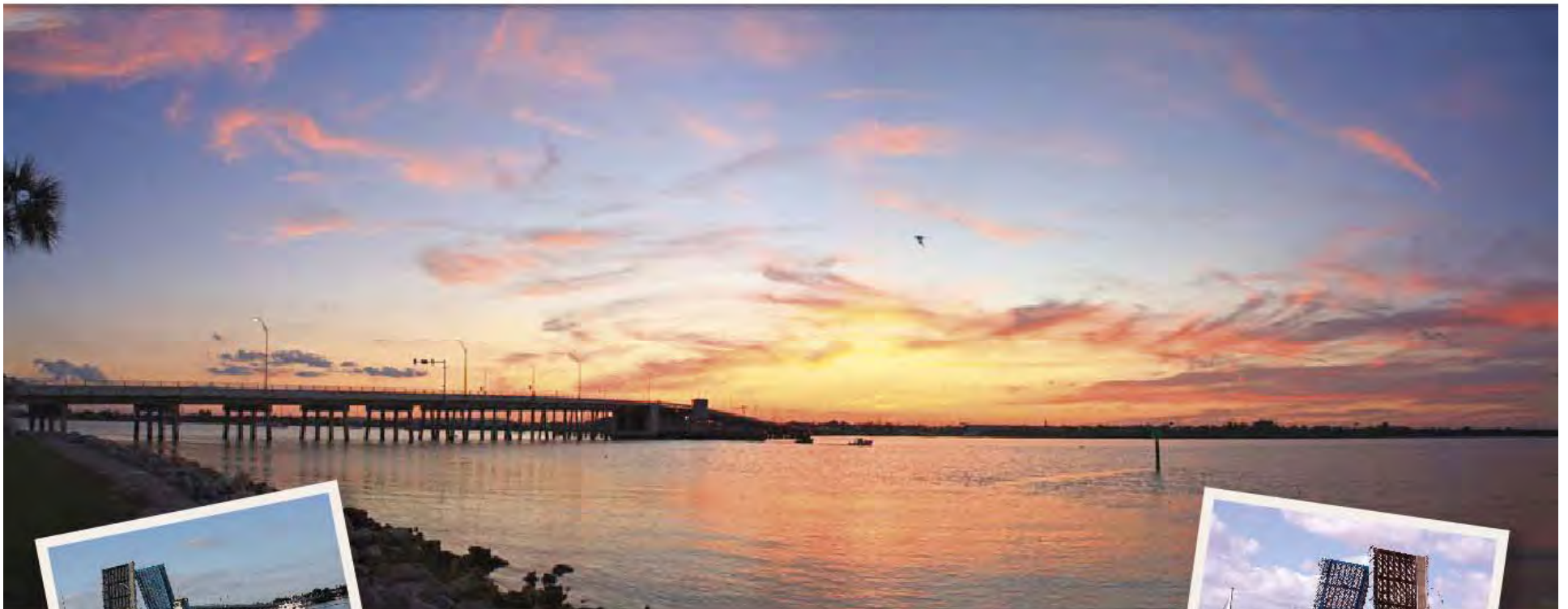
ANALYSIS

The replacement of the SR-A1A North Causeway Bridge is included in the Cost Feasible Plan of the Go2040 Long Range Transportation Plan. The project is programmed for construction in FY 2018/19 in the FY 2016/17 – FY 2020/21 Transportation Improvement Program (TIP). The consultant's presentation will include the latest information on the status of the project, the findings of the PD&E to date, and bridge replacement alternatives.

RECOMMENDATION

It is recommended that a bridge replacement alternative be selected by the TPO Board based on the information contained in the presentation.

PROJECT DEVELOPMENT & ENVIRONMENT (PD&E) STUDY
STATE ROAD A1A
NORTH BRIDGE OVER ICWW



From US-1 to approximately 2,000 feet East of Existing Bridge
St. Lucie County, Florida
FPID 429936-2-22-01 / ETDM #14052



PROJECT DEVELOPMENT & ENVIRONMENT (PD&E) STUDY
STATE ROAD A1A
NORTH BRIDGE OVER ICWW



Location Map



PROJECT DEVELOPMENT & ENVIRONMENT (PD&E) STUDY
STATE ROAD A1A
NORTH BRIDGE OVER ICWW



Project Development & Environment (PD&E) Study

The objectives of a PD&E study are to perform necessary social, environmental and engineering studies of a proposed transportation improvement project to support decisions concerning if and where it should be built and what will be the basic design concepts.

PROJECT DEVELOPMENT & ENVIRONMENT (PD&E) STUDY
STATE ROAD A1A
NORTH BRIDGE OVER ICWW



PD&E Study Components

- Public Involvement
- Engineering
- Environmental

PROJECT DEVELOPMENT & ENVIRONMENT (PD&E) STUDY
STATE ROAD A1A
NORTH BRIDGE OVER ICWW



Public Involvement

- Public Kickoff Meeting was held Thursday, February 5, 2015
- Alternatives Public Meeting held September 10, 2015
- Public Hearing is scheduled for November 10, 2016



Engineering

- Data Collection and Analysis
- Bridge Type
 - Bascule
 - Fixed Span
- Design Alternatives
 - Horizontal
 - Vertical



Data Collection and Analysis

- Vehicular Traffic
- Typical Section
- Boat Traffic



Vehicular Traffic

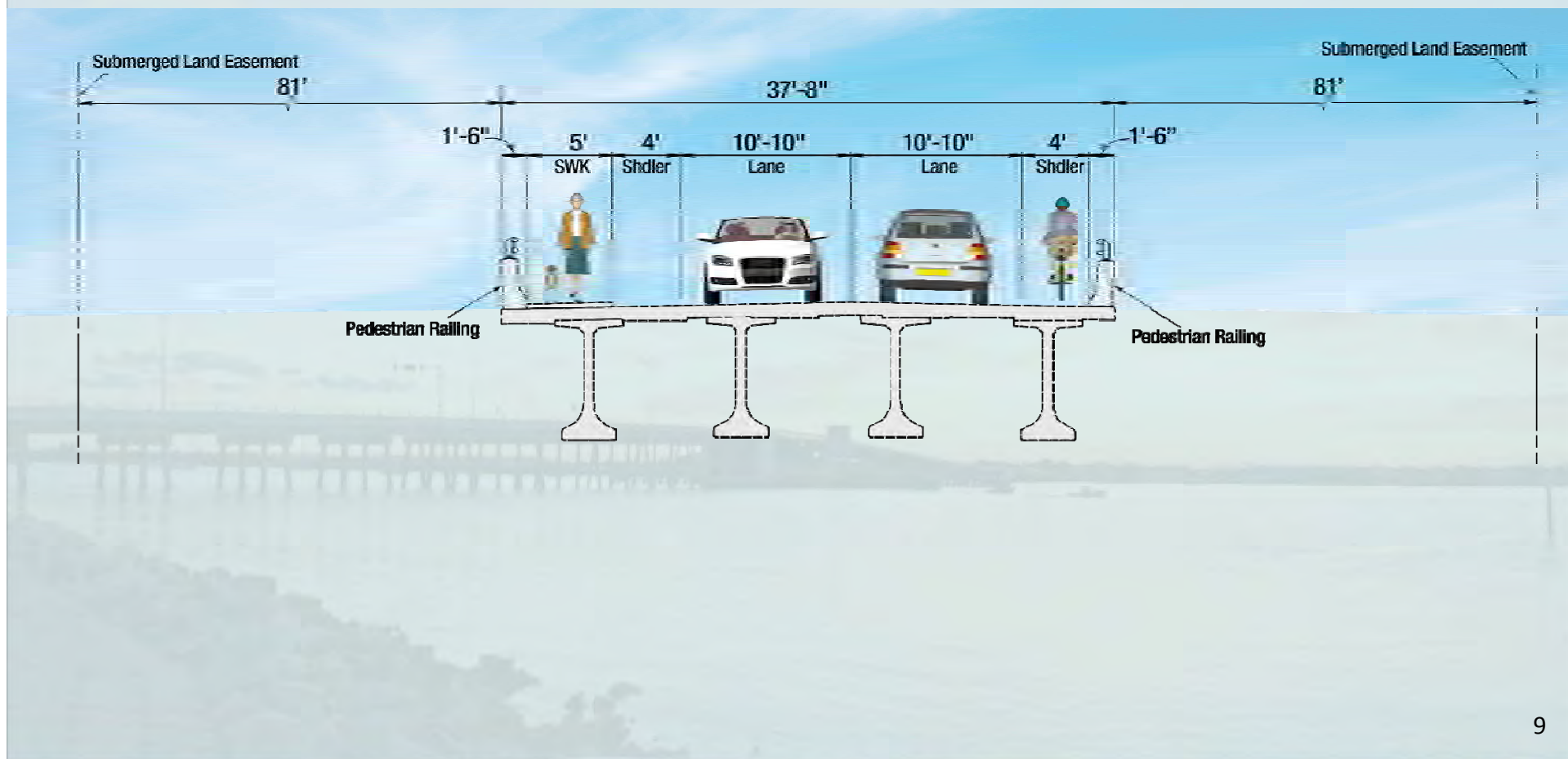
	Daily Vehicle Trips
• 2-lane roadway or bridge can accommodate	= 24,000
• Estimated future year 2040 volume on SR A1A Bridge	= 9,200



PROJECT DEVELOPMENT & ENVIRONMENT (PD&E) STUDY
STATE ROAD A1A
NORTH BRIDGE OVER ICWW



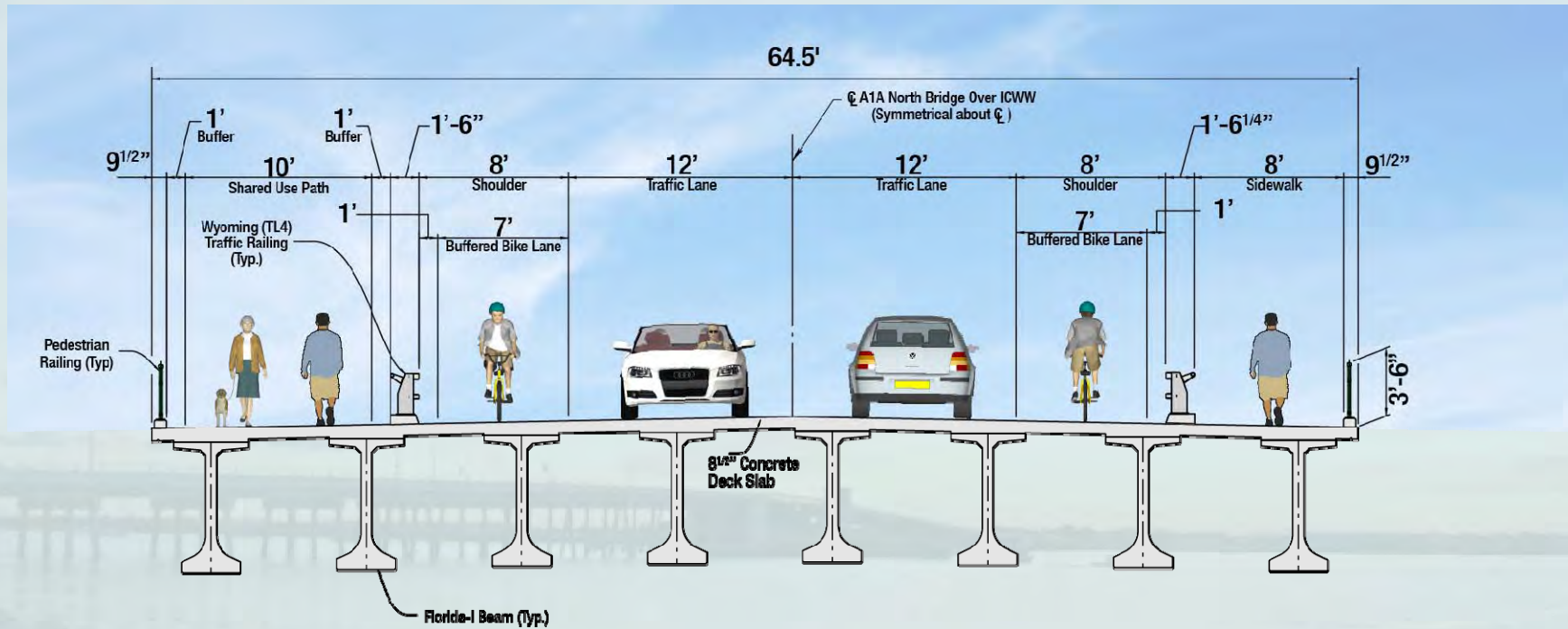
Existing Bridge Typical Section



PROJECT DEVELOPMENT & ENVIRONMENT (PD&E) STUDY
STATE ROAD A1A
NORTH BRIDGE OVER ICWW



Proposed Bridge Typical Section





Vertical Clearance Considerations

- Navigation Survey – existing waterway users
- Number of existing openings
- Raise bridge height to reduce openings
- Cost



Alternatives Analysis

- Vertical Alignment
 - 25' Existing Clearance (Bascule Bridge)
 - 35' Clearance (Bascule Bridge)
 - 65' Clearance (Fixed Span Bridge)
 - 86' Clearance (Fixed Span Bridge)
- Horizontal Alignment
 - Existing
 - North
 - South



Preferred Alternatives Analysis

- Vertical Alignment
 - 86' Clearance (Fixed Span Bridge)
- Horizontal Alignment
 - North

PROJECT DEVELOPMENT & ENVIRONMENT (PD&E) STUDY
STATE ROAD A1A
NORTH BRIDGE OVER ICWW



Comparison of Fixed Bridge Heights



PROJECT DEVELOPMENT & ENVIRONMENT (PD&E) STUDY
STATE ROAD A1A
NORTH BRIDGE OVER ICWW



Comparison of Fixed Bridge Heights



PROJECT DEVELOPMENT & ENVIRONMENT (PD&E) STUDY
 STATE ROAD A1A
 NORTH BRIDGE OVER ICWW



Evaluation Matrix

Vertical Geometry Alternatives

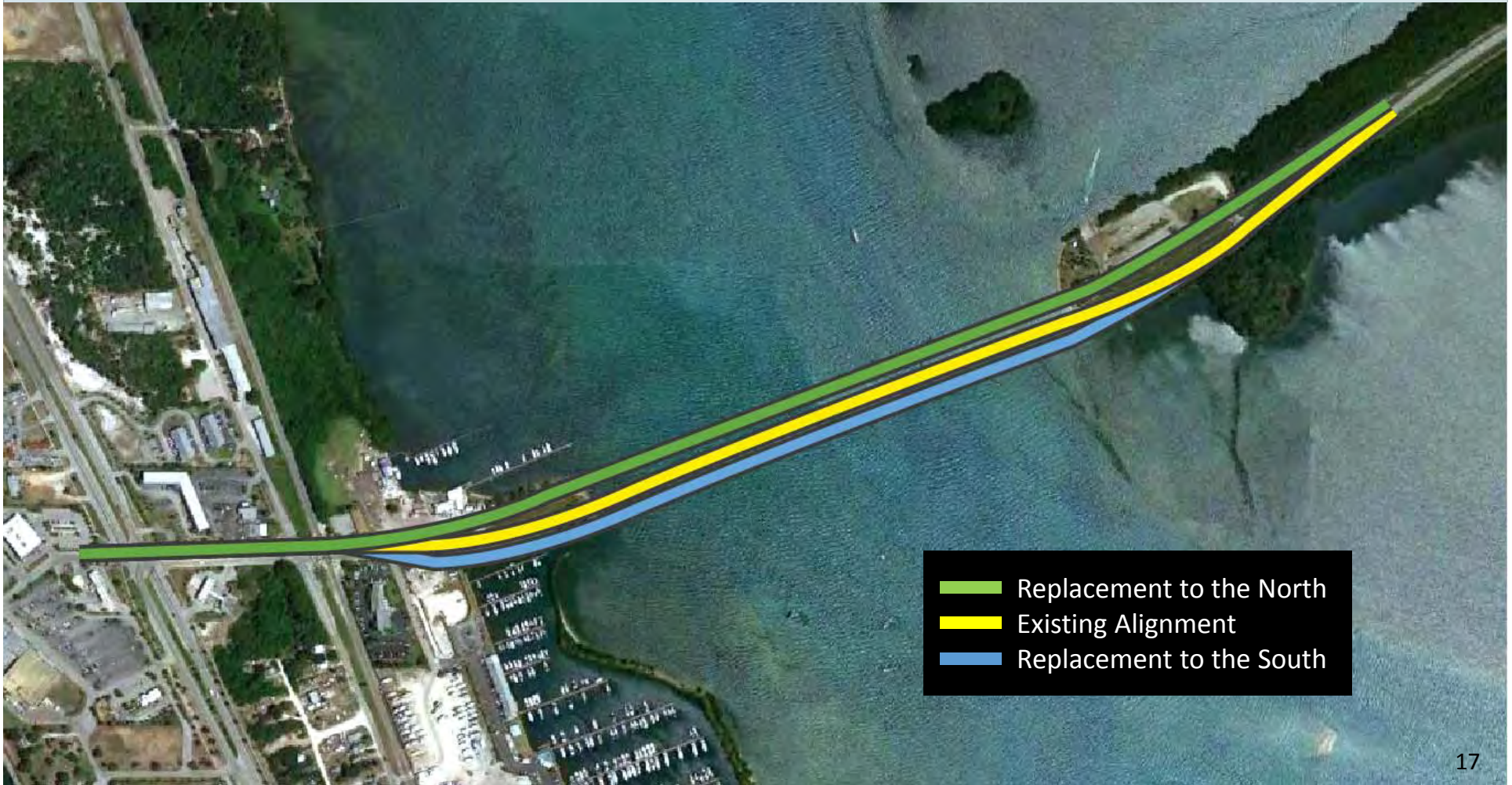
	ALTERNATIVES					
	No Build	25' Bascule	35' Bascule	65' Fixed	86' Fixed	86' Fixed (Temp Bridge)
Bridge Construction Cost	0	\$63,550,000	\$64,570,000	\$25,720,000	\$32,820,000	\$51,670,000*
Evaluation Points	-2	-3	0	Will not Receive US Coast Guard Permit	+12	+6

**Includes \$18.9 Million for Temporary Bridge*

PROJECT DEVELOPMENT & ENVIRONMENT (PD&E) STUDY
STATE ROAD A1A
NORTH BRIDGE OVER ICWW



Horizontal Alignment



From US-1 to approximately 2,000 feet East of Existing Bridge, St. Lucie County, Florida
FPID 429936-2-22-01 / ETDM #14052



PROJECT DEVELOPMENT & ENVIRONMENT (PD&E) STUDY
 STATE ROAD A1A
 NORTH BRIDGE OVER ICWW



Evaluation Matrix Horizontal Alternatives

	ALTERNATIVES							
	No Build	1N	1S	2N	2S	3N	3S	4
Total Project Cost*	0	\$59,280,000	\$69,360,000	\$61,780,000	\$72,200,000	\$66,610,000	\$67,340,000	\$82,900,000
Evaluation Points	-15	+5	0	+4	-1	-1	-6	-5

**Includes \$32,820,000 for cost of 86ft. Fixed Span Bridge*

PROJECT DEVELOPMENT & ENVIRONMENT (PD&E) STUDY
STATE ROAD A1A
NORTH BRIDGE OVER ICWW



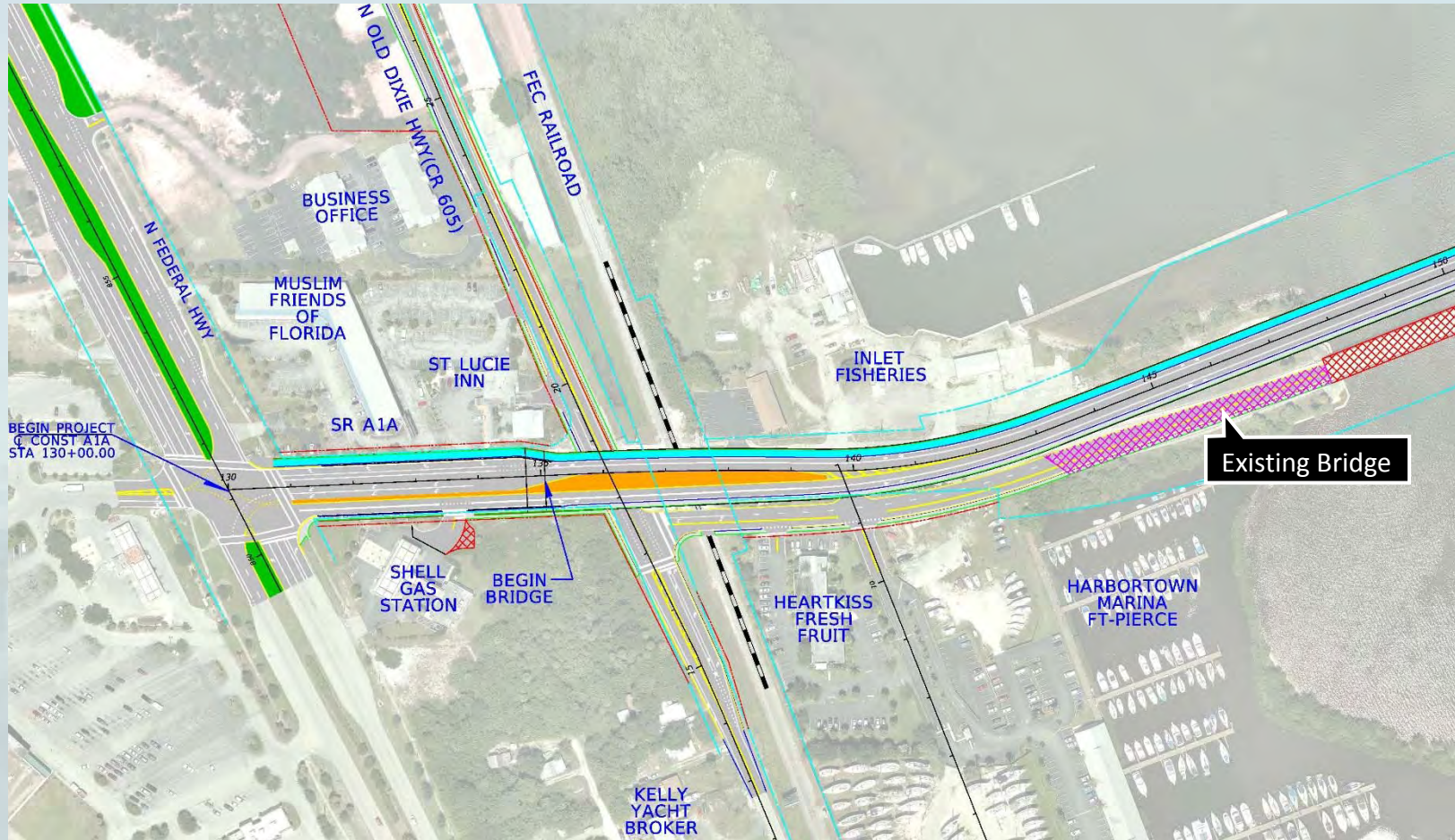
Project Overview



PROJECT DEVELOPMENT & ENVIRONMENT (PD&E) STUDY STATE ROAD A1A NORTH BRIDGE OVER ICWW



Alternative 2



PROJECT DEVELOPMENT & ENVIRONMENT (PD&E) STUDY
STATE ROAD A1A
NORTH BRIDGE OVER ICWW



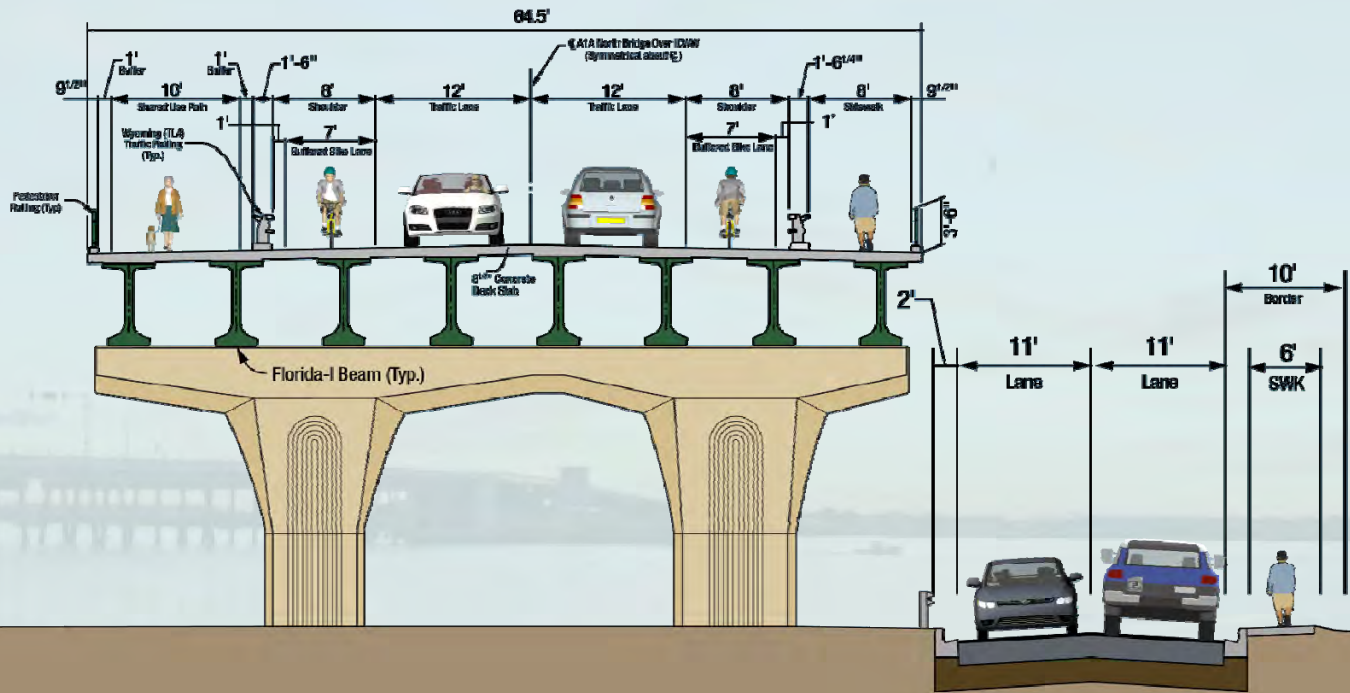
Alternative 2 Option



PROJECT DEVELOPMENT & ENVIRONMENT (PD&E) STUDY
 STATE ROAD A1A
 NORTH BRIDGE OVER ICWW



Alternative 2N



PROJECT DEVELOPMENT & ENVIRONMENT (PD&E) STUDY
STATE ROAD A1A
NORTH BRIDGE OVER ICWW



North Replacement



PROJECT DEVELOPMENT & ENVIRONMENT (PD&E) STUDY
STATE ROAD A1A
NORTH BRIDGE OVER ICWW



Environmental

- Social and Cultural Environment
- Natural Environment
- Physical Environment



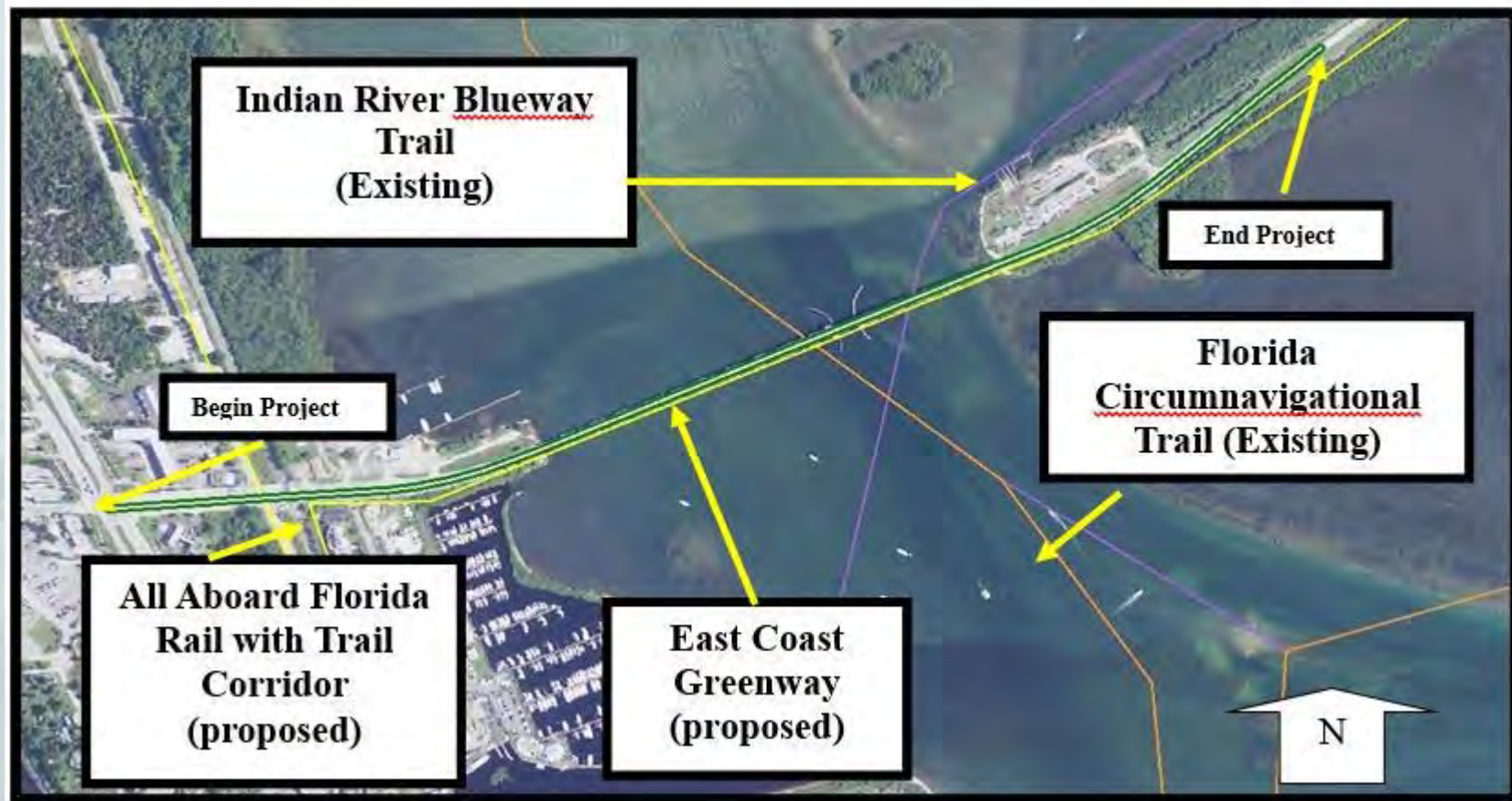
Social and Cultural Effects

- Socio-Economic Impacts
 - Land use change
 - Community cohesion
 - Right-of-way
 - Relocation
 - Economic, mobility aesthetic effects
- Cultural Resources
 - Cultural Resource Assessment Survey (CRAS)
 - Evaluate effects to resources listed or potentially eligible for the National Register of Historic Places

PROJECT DEVELOPMENT & ENVIRONMENT (PD&E) STUDY
STATE ROAD A1A
NORTH BRIDGE OVER ICWW



Section 4(f) Resources



PROJECT DEVELOPMENT & ENVIRONMENT (PD&E) STUDY
STATE ROAD A1A
NORTH BRIDGE OVER ICWW



Section 4(f) Resources



PROJECT DEVELOPMENT & ENVIRONMENT (PD&E) STUDY
STATE ROAD A1A
NORTH BRIDGE OVER ICWW



Section 4(f) Resources



PROJECT DEVELOPMENT & ENVIRONMENT (PD&E) STUDY
STATE ROAD A1A
NORTH BRIDGE OVER ICWW



Natural Effects – Wetlands and EFH

- Wetlands Including Seagrass
 - Seagrass located on both west and east causeways
 - Includes Johnson's, Shoal, Manatee, and Paddle Grasses
 - Mangroves present
- Essential Fish Habitat
 - Includes seagrass, mangrove, sand bottom and water column
 - Habitat Areas of Particular Concern (HAPC) include Coastal Inlets, Continuous and Discontinuous seagrass and Mangroves
- Evaluate alternatives to avoid and minimize adverse effects
- Unavoidable impacts will be mitigated

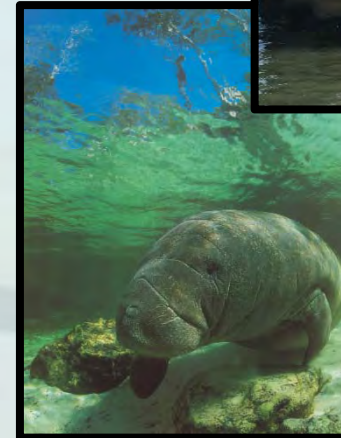


PROJECT DEVELOPMENT & ENVIRONMENT (PD&E) STUDY
STATE ROAD A1A
NORTH BRIDGE OVER ICWW



Natural Effects – Wildlife and Habitat

- West Indian Manatee
- Atlanta Bottlenose Dolphin
- Wood Stork
- Florida Scrub-Jay
- Piping Plover
- Red Knot
- Least Tern
- Brown Pelican
- White Ibis
- Snowy Egret
- Roseate Spoonbill
- Reddish Egret
- Little Blue Heron
- Tri-colored Heron
- Osprey
- Various Sea Turtle Species
- Gopher Tortoise
- Johnson's Seagrass
- Smalltooth sawfish
- Scrub listed plant species





Physical Effects

- Noise Study will be conducted
- Contamination Screening Evaluation
- Asbestos and Lead Based Paint evaluation conducted



Environmental Reports

- Wetland Evaluation
- Endangered Species Biological Assessment
- Cultural Resources Assessment Survey
- Contamination Screening Evaluation
- Air Quality Screening
- Noise
- Essential Fish Habitat Assessment
- Type 2 Categorical Exclusion



What's Next

- Design consultant selected – design underway
- Public hearing scheduled for November 10, 2016
- Location design concept acceptance – April 10, 2016
- Anticipated construction – April 2020

PROJECT DEVELOPMENT & ENVIRONMENT (PD&E) STUDY
STATE ROAD A1A
NORTH BRIDGE OVER ICWW



Contact

FDOT Project Manager:

Donovan Pessoa, P.E.

Florida Department of Transportation

District Four

3400 West Commercial Blvd.

Fort Lauderdale, Florida 33309

(954) 777- 4442

www.SRA1ANORTHBRIDGE.com