

	St. Lucie Transportation Planning Organization	Coco Vista Centre 466 SW Port St. Lucie Blvd, Suite 111 Port St. Lucie, Florida 34953 772-462-1593 www.stlucietpo.org
---	---	---

TECHNICAL ADVISORY COMMITTEE (TAC)

Regular Meeting

Tuesday, July 22, 2025
1:30 pm

Public Participation/Accessibility

Participation in Person: Public comments may be provided in person at the meeting. Persons who require special accommodations under the Americans with Disabilities Act (ADA) or persons who require translation services (free of charge) should contact the St. Lucie TPO at 772-462-1593 at least five days prior to the meeting. Persons who are hearing or speech impaired may use the Florida Relay System by dialing 711.

Participation by Webconference (not intended for Committee Members): Using a computer or smartphone, register at <https://attendee.gotowebinar.com/register/7866676291291811677>. After the registration is completed, a confirmation will be emailed containing instructions for joining the webconference. Public comments may be provided through the webconference chatbox during the meeting.

Written and Telephone Comments: Comment by email to TPOAdmin@stlucieco.org; by regular mail to the St. Lucie TPO, 466 SW Port St. Lucie Boulevard, Suite 111, Port St. Lucie, Florida 34953; or call 772-462-1593 until 1:00 pm on July 22, 2025.

AGENDA

1. **Call to Order**
2. **Roll Call**
3. **Comments from the Public**
4. **Approval of Agenda**
5. **Approval of Meeting Summary**
 - *May 20, 2025 Regular Meeting*
6. **Action Items**
 - 6a. **U.S. Highway 27 Freight Rail Bypass Project:** Presentation by the Treasure Coast Regional Planning Council on the proposed U.S. Highway 27 Freight Rail Bypass Project.

Action: *Recommend endorsement of the proposed U.S. Highway 27 Freight Rail Bypass Project, recommend endorsement with conditions, or do not recommend endorsement.*

- 6b. Reimagine Mobility 2050 Long Range Transportation Plan (LRTP) Development:** Review of various draft elements from the development of the Reimagine Mobility 2050 LRTP.

***Action:** Recommend adoption of the draft elements, recommend adoption with conditions, or do not recommend adoption.*

- 6c. St. Lucie Advanced Transportation Management System (ATMS) Master Plan Update Scope of Services:** Review of the draft Scope of Services for the St. Lucie ATMS Master Plan Update.

***Action:** Recommend approval of the draft Scope of Services, recommend approval with conditions, or do not recommend approval.*

7. Discussion Items

- 7a. Regional Bus Services Update:** A presentation on the operation of the I-95/Port St. Lucie Express Bus Service and Jobs Express Terminal over the past year.

***Action:** Discuss and provide comments.*

8. Recommendations/Comments by Members

9. Staff Comments

- 10. Next Meeting:** The next St. Lucie TPO TAC meeting is a joint meeting with the Citizens Advisory Committee and the Bicycle-Pedestrian Advisory Committee scheduled for 1:30 pm on Tuesday, October 21, 2025.

11. Adjourn

NOTICES

The St. Lucie TPO satisfies the requirements of various nondiscrimination laws and regulations including Title VI of the Civil Rights Act of 1964. Public participation is welcome without regard to race, color, national origin, age, sex, religion, disability, income, or family status. Persons wishing to express their concerns about nondiscrimination should contact Marceia Lathou, the Title VI/ADA Coordinator of the St. Lucie TPO, at 772-462-1593 or via email at lathoum@stlucieco.org.

Items not included on the agenda may also be heard in consideration of the best interests of the public's health, safety, welfare, and as necessary to protect every person's right of access. If any person decides to appeal any decision made by the St. Lucie TPO Advisory Committees with respect to any matter considered at a meeting, that person shall need a record of the proceedings, and for such a purpose, that person may need to ensure that a verbatim record of the proceedings is made which includes the testimony and evidence upon which the appeal is to be based.

Kreyòl Ayisyen: Si ou ta renmen resevwa enfòmasyon sa a nan lang Kreyòl Ayisyen, tanpri rele nimewo 772-462-1593.

Español: Si usted desea recibir esta información en español, por favor llame al 772-462-1593.



TECHNICAL ADVISORY COMMITTEE (TAC)

REGULAR MEETING

DATE: Tuesday, May 20, 2025

TIME: 1:30 pm

MEETING SUMMARY

1. Call to Order

The meeting was called to order at 1:44 pm.

2. Roll Call

The roll call was conducted via sign-in sheet, and a quorum was confirmed with the following members present:

Members Present

Patrick Dayan, Chairman
Antonio Balestrieri, Vice Chairman
Mary Savage-Dunham
Robert Driscoll

Benjamin Balcer
Selena Griffett
Mark Zrallack
Lieutenant Jesse Almand

Others Present

Kyle Bowman
Peter Buchwald
Yi Ding
Marceia Lathou
Stephanie Torres
Teresa Lane

Representing

St. Lucie County Public Works
Port St. Lucie Public Works
Port St. Lucie Planning
Independent Public Transportation
Operator
St. Lucie County Planning
Fort Pierce Engineering
Fort Pierce Engineering
St. Lucie County Fire District

Representing

St. Lucie TPO
St. Lucie TPO
St. Lucie TPO
St. Lucie TPO
St. Lucie TPO
Recording Specialist

Frank Watanabe
Kelly Budhu

Tony Norat

Others Present Online

James Brown

St. Lucie County
Florida Department of
Transportation (FDOT)
FDOT

Representing

Florida's Turnpike

3. Comments from the Public – None.

4. Approval of Agenda

* **MOTION** by Mr. Driscoll to approve the agenda.

** **SECONDED** by Mr. Balcer Carried **UNANIMOUSLY**

5. Approval of Meeting Summary

- *March 25, 2025 Regular Meeting and Federal Certification Review Public Meeting*

* **MOTION** by Mr. Driscoll to approve the meeting summary.

** **SECONDED** by Mr. Balcer Carried **UNANIMOUSLY**

6. Action Items

6a. Draft FY 2025/26 – FY 2029/30 Transportation Improvement Program (TIP): Review of the draft FY 2025/26 – FY 2029/30 TIP.

Mr. Buchwald explained that the TPO develops a TIP annually to identify projects that have been prioritized and receive State or Federal funding over the next five years. He also noted that the TIP is also used to coordinate projects among Federal, State and Local government agencies and introduced Mr. Ding to continue. Mr. Ding advised that the development of the TIP was a year-long progress that started in May 2024 with the development of the TPO's List of Priority Projects. Mr. Ding identified numerous highlights of the draft TIP and pointed out a handful of transportation projects with totaling \$10 million that were at risk of being eliminated after Florida returned \$320 million in Federal Carbon Reduction Program Funding statewide. However, Mr. Ding

DRAFT

indicated that FDOT managed to find other funding sources for the projects. He further advised that the total amount of funding in the draft TIP exceeds \$535 million which matches the amount in the previous TIP and concluded with a summary of the TIP/LRTP System Performance Report.

Chairman Dayan praised FDOT District 4 for finding alternative funding for the Carbon Reduction Program projects and, in reviewing the walking modal share in the TIP/LRTP System Performance Report, noted that the County's percentage of this share has declined slightly since 2020 while the percentage of people who use other transportation modes has remained roughly the same.

* **MOTION** by Mr. Driscoll to recommend adoption of the draft FY 2025/26 – FY 2029/30 TIP.

** **SECONDED** by Mr. Balcer Carried **UNANIMOUSLY**

6b. 2025/26 List of Priority Projects (LOPP): Review of the draft LOPP for 2025/26 for the St. Lucie TPO.

Mr. Buchwald explained how the review of the LOPP is part of the year-long process for the development of the TIP, and how, upon its adoption, the LOPP will be submitted to FDOT for the programming of projects which are funded and included in the FDOT Work Program to the maximum extent feasible. He summarized the changes in the LOPP Master List since last year, noting the limits of the California Boulevard project were updated to reflect the local priorities of the City of Port St. Lucie and the award of a Federal Earmark to fund a Project Development and Environment (PD&E) Study. Mr. Buchwald also advised that the Congestion Management Process (CMP) Projects List was updated, and the list of Transit Projects was revised to include continuing the Lakewood Park Regional Route 7. The Transportation Alternatives (TA) Projects List was updated to reflect the results of the 2025 TA grant cycle, which prioritized the Easy Street Sidewalk project to Canal 22 and Silver Oak Drive.

Ms. Griffett recommended that the Project Description of the 29th Street traffic-calming project in the CMP Projects List be revised to allow other types of calming devices in addition to speed humps and tables. She observed that other options could be more cost-effective and suggested the improvements be based on the Comprehensive Safety Action Plan being developed for the City of Fort Pierce. Vice Chairman Balestrieri mentioned that accessible pedestrian signals should continue to be

DRAFT

required at intersections and noted he has discussed the topic with FDOT.

- * **MOTION** by Mr. Driscoll to recommend adoption of the draft 2025/26 LOPP with the revision proposed by Ms. Griffett.

- ** **SECONDED** by Mr. Balcer Carried **UNANIMOUSLY**

6c. Oxbow Eco-Center Pedestrian/Bicycle Link Feasibility Study Scope of Services: Review of the draft Scope of Services for the Feasibility Study of a pedestrian/bicycle link between the Oxbow Eco-Center and the Citrus Hammock Preserve on the eastern side of the St. Lucie River.

Mr. Buchwald introduced Ms. Torres to present the draft Scope of Services for the Feasibility Study which will identify feasible alternatives for a proposed pedestrian and bicycle link from the Oxbow Eco-Center to Citrus Hammock Preserve. Ms. Torres indicated that the proposed Scope was recommended by a TPO Advisory Committee, and the future connection will provide east-west access to the North Fork St. Lucie River Trail, the East Coast Greenway Trail, and the Florida Shared-Use Nonmotorized (SUN) Trail. The Scope of Services was prepared by Marlin Engineering, one of the TPO's General Planning Consultants, to evaluate existing conditions and collect data, interview stakeholders, and formulate a preferred route and potential alignments. She also identified that the Feasibility Study, which will cost \$39,910.92, will be completed by April 2026.

Chairman Dayan opined that it will be valuable to have the public workshop included in the Scope of Services at next year's popular Earth Day event at the Eco-Center and lauded the link as a worthy project.

- * **MOTION** by Ms. Griffett to recommend approval of the Scope of Services.

- ** **SECONDED** by Mr. Zrallack Carried **UNANIMOUSLY**

6d. Transportation Impacts Tracker Scope of Services: Review of the draft Scope of Services for the development and maintenance of the Transportation Impacts Tracker.

Mr. Buchwald explained that the Tracker will be used to monitor the cumulative impacts of developments approved by local governments on the transportation system and to verify the accuracy of Transportation Impacts Analyses submitted with development applications. He also noted that the Tracker will incorporate a vested trips database that will be updated based on information contained in Transportation Impacts

DRAFT

Analyses. He concluded by identifying that the development and maintenance of the tool will be conducted throughout FY 2025/26 at a proposed cost of \$39,047.

In response to questions by Ms. Savage-Dunham, Mr. Buchwald confirmed that the information will be available in a GIS format and indicated when and how the tool will be updated with approved, unbuilt development. In response to a question from Mr. Balcer, Mr. Buchwald identified the availability of the tool to the local governments with the ability to provide snapshots of data to those outside of the local governments.

Chairman Dayan praised the tool as a valuable check on private traffic engineers.

* **MOTION** by Ms. Savage-Dunham to recommend approval of the Scope of Services.

** **SECONDED** by Mr. Balcer Carried **UNANIMOUSLY**

7. Recommendations/Comments by Members – Ms. Savage-Dunham reported that the City of Port St. Lucie is updating its mobility plan and studying congested roadways in coordination with the County and requested to meet with TPO Staff to discuss traffic modeling with the City’s consultant. Mr. Buchwald offered to have the TPO’s modeling consultant review the work of the City’s consultant.

In response to a question from Chairman Dayan, Mr. Ding reported that the Roadway Needs Plan for the TPO’s Long Range Transportation Plan (LRTP) Update will be completed by July 2025. Ms. Savage-Dunham then identified the need for additional north-south and east-west connector roadways.

Vice Chairman Balestrieri noted that the City is seeing support for a new Marshall Parkway Interchange and reported that roadways like Tradition and Village Parkways are suffering from capacity issues. Mr. Buchwald identified that, as part of the LRTP Update, it will be evaluated whether improvements to the Interstate 95 interchanges at Gatlin Boulevard and Becker Road will eliminate the need for a new interchange at Marshall Parkway.

Chairman Dayan reported that a crosswalk and three-way stop sign were installed on the Florida SUN Trail across Walton Road at Green

River Parkway and noted that, as a result, the traffic flow on Green River Parkway has improved.

Vice Chairman Balestrieri commented on the City's ongoing efforts to install roundabouts instead of traffic lights to remove the possibility of T-bone crashes and noted that while some people continue to object, many motorists see their value once installed as the cost of maintaining a roundabout is much cheaper than a signalized intersection.

8. Staff Comments – None.

9. Next Meeting: The next St. Lucie TPO TAC meeting is a regular meeting scheduled for 1:30 pm on Tuesday, July 22, 2025.

10. Adjourn – The meeting was adjourned at 2:38 pm.

Respectfully submitted:

Approved by:

Teresa Lane
Recording Specialist

Patrick Dayan
Chair



Coco Vista Centre
466 SW Port St. Lucie Blvd, Suite 111
Port St. Lucie, Florida 34953
772-462-1593 www.stlucietpo.org

AGENDA ITEM SUMMARY

Board/Committee:	Technical Advisory Committee (TAC)
Meeting Date:	July 22, 2025
Item Number:	6a
Item Title:	U.S. Highway 27 Freight Rail Bypass Project
Item Origination:	Treasure Coast Regional Planning Council (TCRPC)
UPWP Reference:	Task 3.6 - Freight Planning Task 4.1 - Models of Regional Planning Cooperation
Requested Action:	Recommend endorsement of the proposed U.S. Highway 27 Freight Rail Bypass Project, recommend endorsement with conditions, or do not recommend endorsement
Staff Recommendation:	It is recommended that the potential impacts of the U.S. Highway 27 Freight Rail Bypass Project to downtown Fort Pierce, St. Lucie Village, PGA Village, and western and northern St. Lucie County be identified and evaluated before considering the project for endorsement.

Attachments

- Staff Report
- TCRPC Resolution #24-06
- U.S. Highway 27 Freight Rail Bypass Project Presentation



Coco Vista Centre
466 SW Port St. Lucie Blvd, Suite 111
Port St. Lucie, Florida 34953
772-462-1593 www.stlucietpo.org

MEMORANDUM

TO: Technical Advisory Committee (TAC)

FROM: Peter Buchwald
Executive Director

DATE: July 15, 2025

SUBJECT: **U.S. Highway 27 Freight Rail Bypass Project**

BACKGROUND

For a number of years, the Treasure Coast Regional Planning Council (TCRPC) has supported the implementation of a new freight rail route connecting South Florida to Central Florida along U.S. Highway 27 between Miami and greater Orlando. At its request, the TCRPC will present the proposed project to the TPO Advisory Committees for recommendation before presenting to the TPO Board for endorsement.

ANALYSIS

The attached Resolution #24-06 of the TCRPC identifies the past efforts “to analyze multimodal options to connect PortMiami by rail within inland logistics centers around Lake Okeechobee in western Palm Beach County” and consider “the feasibility of removing freight traffic from congested coastal corridors”. While the Resolution identifies that the benefits of the project include “reducing freight traffic through the population centers of the coast between Ft. Pierce and Miami”, the attached presentation identifies a “Northern Connection” option of the project through downtown Fort Pierce. In addition, the Northern Connection extends along PGA Village and the rapidly expanding residential communities of western St. Lucie County.

Such a connection may significantly increase freight rail traffic through downtown Fort Pierce, St. Lucie Village, and northern St. Lucie County and along PGA Village and the rapidly expanding residential communities of western St. Lucie County resulting in impacts that may be consequential. It should be noted that no other coastal population center south of Fort Pierce

faces such potential consequential impacts from the project. Therefore, the potential impacts of the project to historic downtown Fort Pierce, St. Lucie Village, PGA Village, and western and northern St. Lucie County should be identified and evaluated before considering the project for endorsement or inclusion, as suggested by the TCRPC, in the TPO's Long Range Transportation Plan.

RECOMMENDATION

It is recommended that the potential impacts of the U.S. Highway 27 Freight Rail Bypass Project to downtown Fort Pierce, St. Lucie Village, PGA Village, and western and northern St. Lucie County be identified and evaluated before considering the project for endorsement.



RESOLUTION #24-06

A RESOLUTION OF THE TREASURE COAST REGIONAL PLANNING COUNCIL, REPRESENTING THE LOCAL GOVERNMENTS OF PALM BEACH, MARTIN, ST. LUCIE AND INDIAN RIVER COUNTIES, FLORIDA, URGING THE FLORIDA DEPARTMENT OF TRANSPORTATION TO UNDERTAKE THE NECESSARY STUDIES, INCLUDING A GENERAL MULTI MODAL PLANNING STUDY AND A PROJECT DEVELOPMENT AND ENVIRONMENT (PD&E) STUDY, AND EXPEDITE THE IMPLEMENTATION OF A NEW FREIGHT RAIL ROUTE ALONG THE U.S. HIGHWAY 27 MULTIMODAL CORRIDOR BETWEEN PORTMIAMI AND THE I-4 CORRIDOR; PROVIDING FOR TRANSMITTAL; AND PROVIDING FOR AN EFFECTIVE DATE

WHEREAS, the Treasure Coast Regional Planning Council is a multi-purpose regional governmental entity with policy responsibility in the areas of affordable housing, economic development, emergency preparedness, energy, health, natural resources, urban planning, and regional transportation; and

WHEREAS, the Treasure Coast Regional Planning Council's geographical area is comprised of Indian River, Martin, St. Lucie, and Palm Beach counties and the 52 municipalities contained therein and home to over 2.1 million people; and

WHEREAS, the Strategic Intermodal System (SIS) is Florida's high priority network of transportation facilities important to the state's economy and mobility, the highest priority for transportation capacity investments, and a primary focus for implementing the Florida Transportation Plan (FTP), which is the State's long-range transportation vision and policy plan; and

WHEREAS, U.S. Highway 27, the Florida East Coast (FEC) Railway, the CSX Transportation/South Florida Rail Corridor, I-95, and the Florida Turnpike are included in the SIS network and are listed as Significant Regional Resources and Facilities in the Council's Strategic Regional Policy Plan; and

WHEREAS, Regional Goal 7.1 in the Strategic Regional Policy Plan calls for creation of a balanced and integrated transportation system with, in Strategy 7.1.1, commuter rail service with stations linking the coastal cities and towns of the Region; and

WHEREAS, the Treasure Coast Regional Planning Council recognizes rail as an economically and environmentally valuable form of passenger and freight transportation throughout the Region and the State; and

WHEREAS, U.S. Highway 27 has long been identified by the Florida Department of Transportation (FDOT) and several regional transportation planning organizations and providers as an important future corridor between Miami and Orlando critical for improving Florida's global competitiveness, economic development, multimodal mobility opportunities, and safety; and

WHEREAS, FDOT in 2012 conducted a Planning and Conceptual Engineering (PACE) study to analyze multimodal options to connect PortMiami by rail within inland logistics centers around Lake Okeechobee in western Palm Beach County, this study considered the feasibility of removing freight traffic from congested coastal corridors facilitating the restoration of passenger rail service along the FEC Railway, and this study identified "no fatal flaws;" and

WHEREAS, advancing the project would provide several important regional benefits, including:

1. Reducing freight traffic through the population centers of the coast between Ft. Pierce and Miami;
2. Freeing up capacity on the FEC Railway for commuter passenger trains;
3. Diverting truck traffic from U.S. Highway 27, I-95, and Florida's Turnpike;
4. Enhancing port operations by making inland intermodal logistics centers viable;
5. Supporting economic development and job creation for the distressed communities along the south, east, and west sides of Lake Okeechobee; and
6. Providing transportation without triggering sprawl; and

WHEREAS, rail along US 27 has been included as an unfunded need in the SIS 2045 Multimodal Unfunded Needs Plan; and

WHEREAS, passenger rail service along the FEC corridor has been restored with Brightline providing 32 daily trains connecting Orlando to Miami; and

WHEREAS, the Miami-Dade Department of Transportation and Public Works has been awarded a Federal Transit Administration (FTA) grant to provide commuter passenger rail service on the FEC corridor connecting Aventura to Miami; and

WHEREAS, Broward County Transit and FDOT District Four are currently working to apply for an FTA grant, which will provide commuter passenger rail service along the FEC corridor from south of the New River in Fort Lauderdale to Aventura, and have plans to extend passenger rail service from south of the New River in Fort Lauderdale to the Broward/Palm Beach County line; and

WHEREAS, the Palm Beach Transportation Planning Agency (TPA) has plans to extend passenger rail service from the Broward/Palm Beach County line to north of West Palm Beach; and

WHEREAS, the Southeast Florida Transportation Council (SEFTC) will include the US 27 Rail project in its 2050 Regional Transportation Plan and will be considering Resolution 2024-1 on October 18, 2024 requesting FDOT to undertake a PD&E study for rail along U.S. Highway 27; and

WHEREAS, it is anticipated that the Miami-Dade TPO, Broward MPO, and Palm Beach TPA will include portions of the US 27 Rail project within their planning boundaries in their respective 2050 Long Range Transportation Plans; and

WHEREAS, on October 12, 2018, meeting jointly, the Treasure Coast Regional Planning Council and South Florida Regional Planning Council adopted Resolution TCSF #18-05 which called for the FDOT to "expedite the process to advance the (US 27 Rail) concept, leading to inclusion of scheduled funding to undertake a PD&E study and construction of a new freight rail route along the U.S. Highway 27 Multimodal Corridor between PortMiami and the I-4 Corridor;" and

WHEREAS, for the significant reasons given above and due to the ever-expanding growth in population, trade, and transportation demand in South Florida it is critically important and urgent that a new, efficient freight transportation corridor be created.

NOW, THEREFORE, BE IT RESOLVED BY THE TREASURE COAST REGIONAL PLANNING COUNCIL THAT:

Section 1. The above recitals are declared to be true and correct and are hereby made a part of this Resolution.

Section 2. The Council again requests that the Florida Department of Transportation undertake the necessary studies, including a General Multi Modal Planning Study and a Project Development and Environment (PD&E) study, leading to expedited construction of a new freight rail route along the U.S. Highway 27 Multimodal Corridor between PortMiami and the I-4 Corridor that meets the above-described objectives.

Section 3. A copy of this Resolution shall be transmitted to the FDOT, St. Lucie TPO, Martin MPO, Palm Beach TPA, Heartland Regional TPO, SEFTC, South Florida Regional Planning Council, Southwest Florida Regional Planning Council, and the Central Florida Regional Planning Council.

Section 4. This Resolution shall be effective upon adoption.

DULY ADOPTED by the Treasure Coast Regional Planning Council this 18th day of October 2024.



Doug Smith
Chair

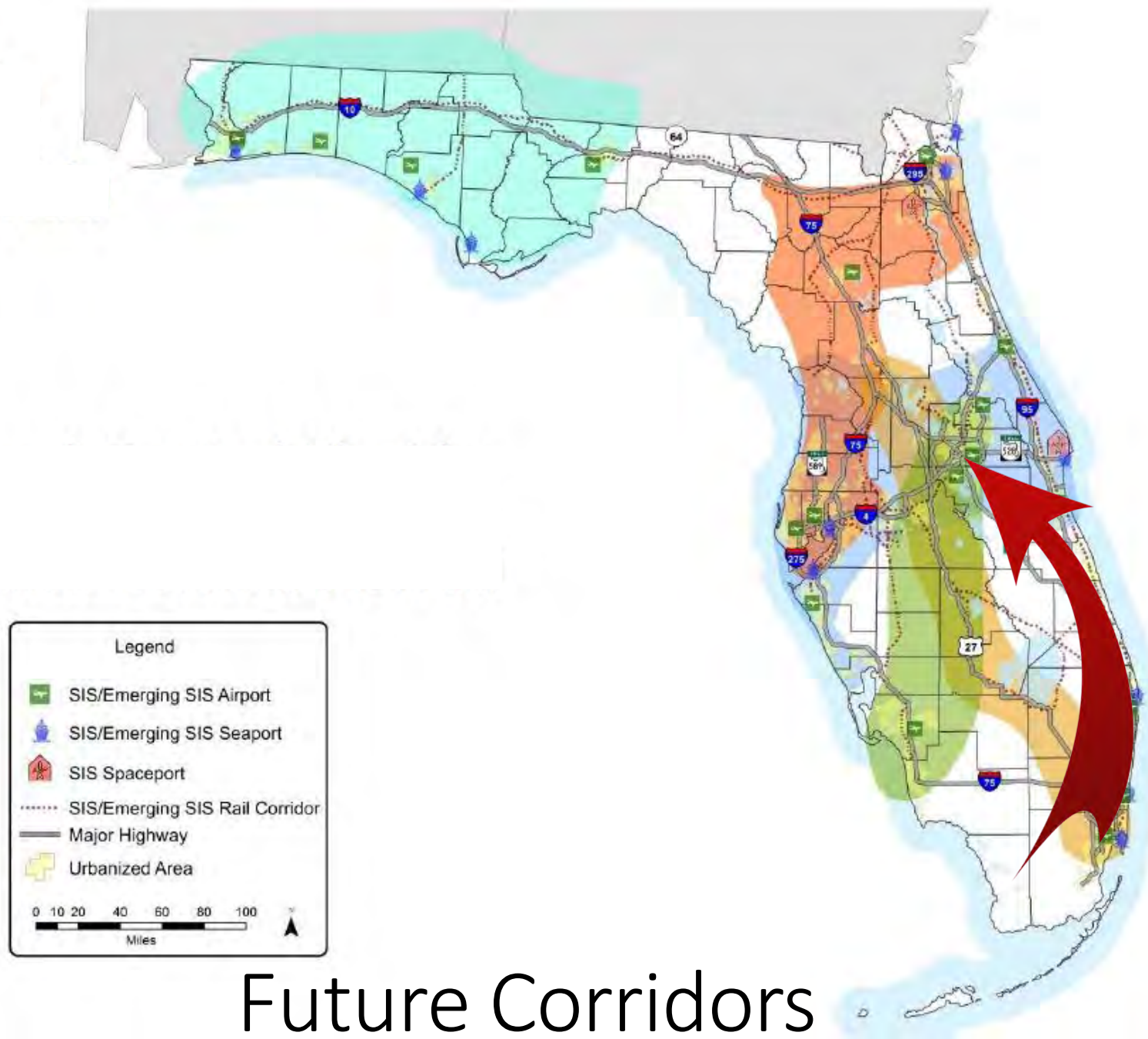


Thomas J. Lanahan
Executive Director

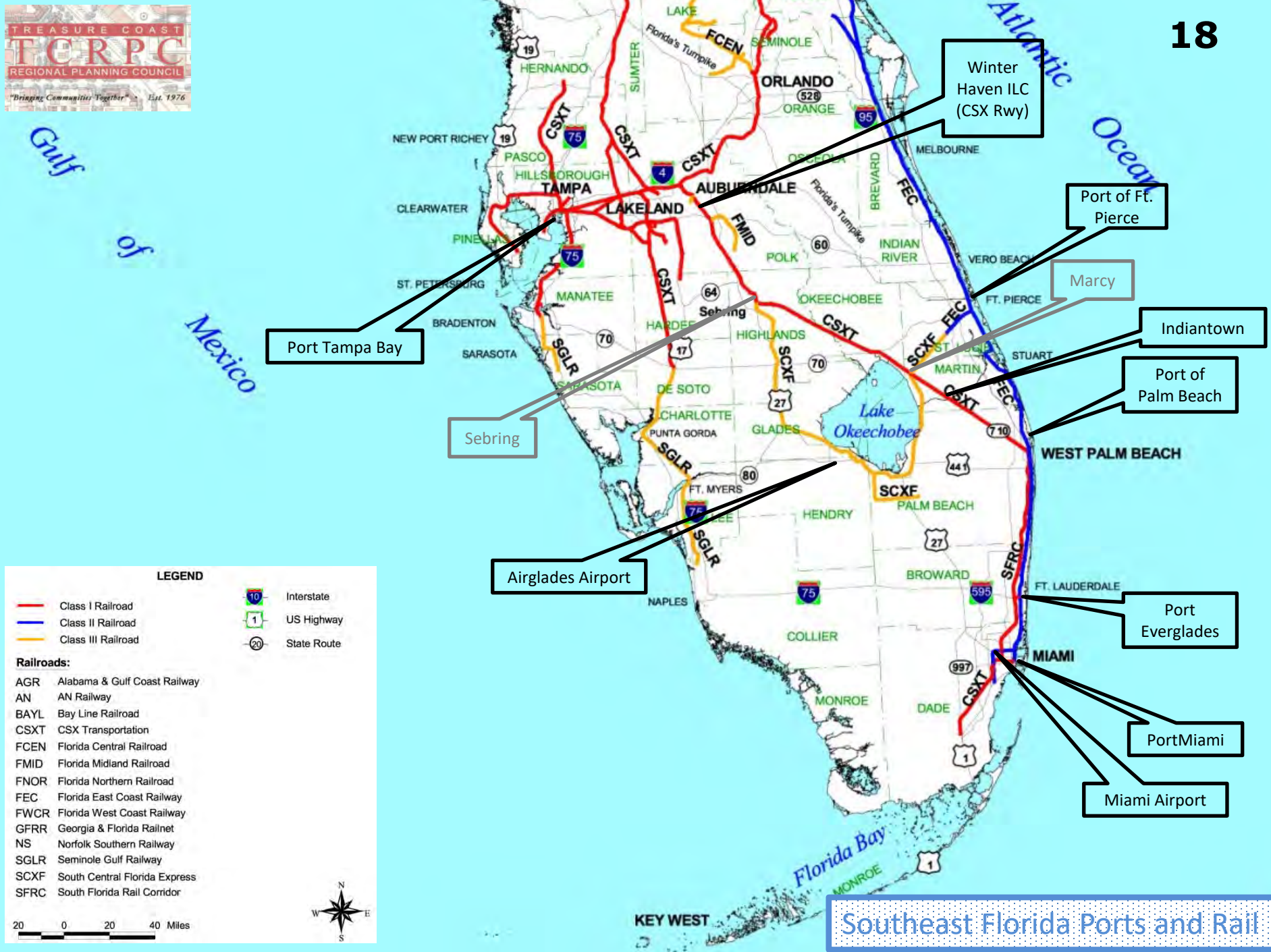
FREIGHT RAIL BYPASS (US 27 CORRIDOR & CONNECTIONS)



TREASURE COAST REGIONAL PLANNING COUNCIL
SAINT LUCIE TRANSPORTATION PLANNING ORGANIZATION
COMMITTEE MEETINGS – JULY 2025







Southeast Florida Ports and Rail



FDOT Studies to Date

- 2004 US 27 Action Plan
- 2008 US 27 Multimodal Corridor Needs Assessment
- 2010 US 27 Rail Corridor Study Feasibility Assessment
- 2012 Interregional Transportation Infrastructure Needs Study
- 2012-2013 US 27 Multimodal Planning And Conceptual Engineering (PACE) Study
- 2013 US 27 Transportation Alternatives Study
- 2018 US 27 Existing Conditions Study
- 2024 Conversations Start Again

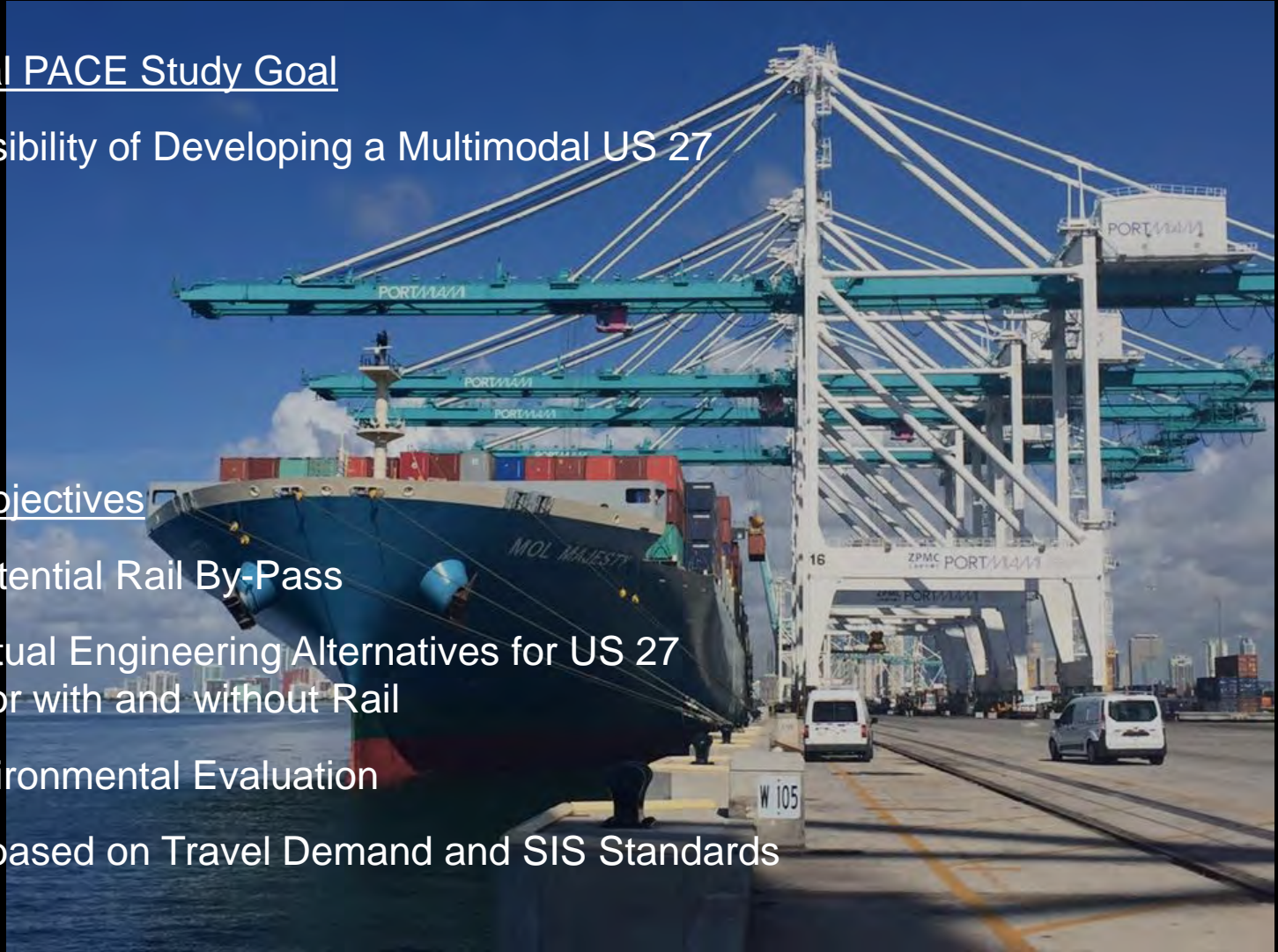


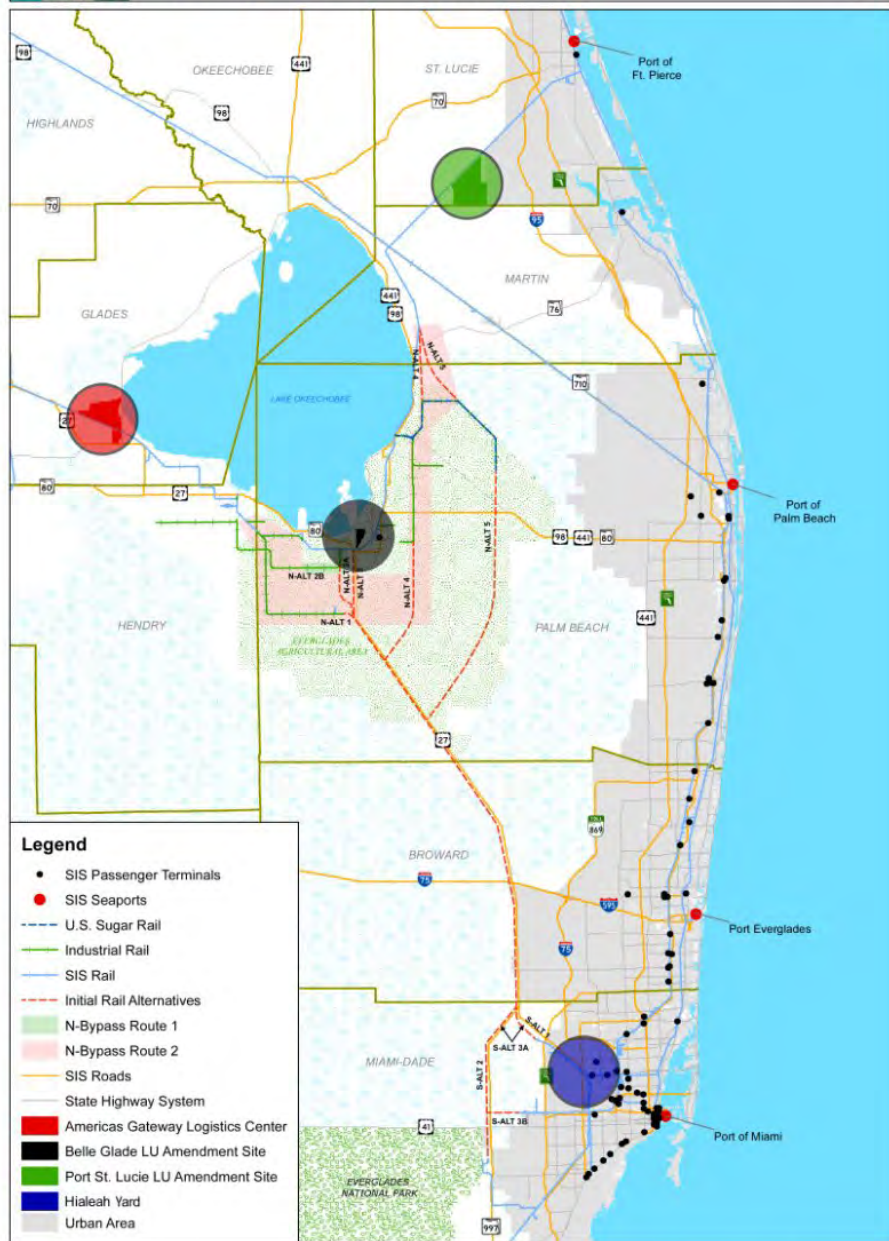
US 27 Multimodal PACE Study Goal

- Investigate Feasibility of Developing a Multimodal US 27 Corridor

Primary Study Objectives

- Feasibility of Potential Rail By-Pass
- Identify Conceptual Engineering Alternatives for US 27 Highway Corridor with and without Rail
- Preliminary Environmental Evaluation
- Plan for US 27 based on Travel Demand and SIS Standards



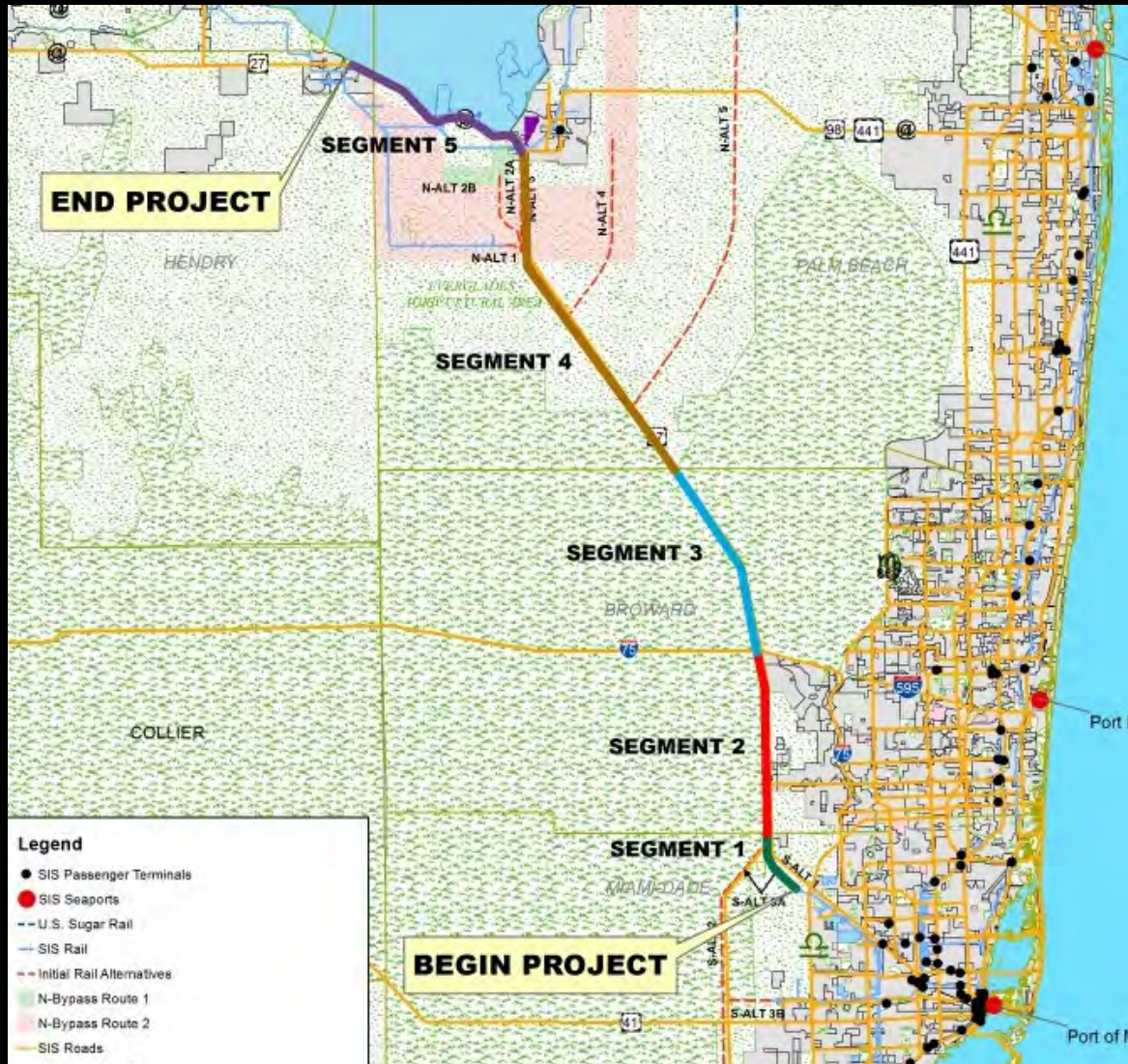


US 27 Corridor

- 72-Mile Strategic Intermodal System (SIS) Corridor
- Everglades Agricultural Area
- Rural Area of Critical Economic Concern (RACEC)
- Four Lane Divided Highway
- 100' to 481' Right of Way
- Speed Limit: 30 mph – 65 mph
- Connects to Turnpike, I-75, SR 80
- 1 Interchange, 8 Signalized Intersections, 26 Unsignalized Intersections, Multiple Driveways
- 2010 Level of Service was B
- 7,100 AADT - 33,000 AADT; 20% - 42% Trucks

Multimodal Alternative

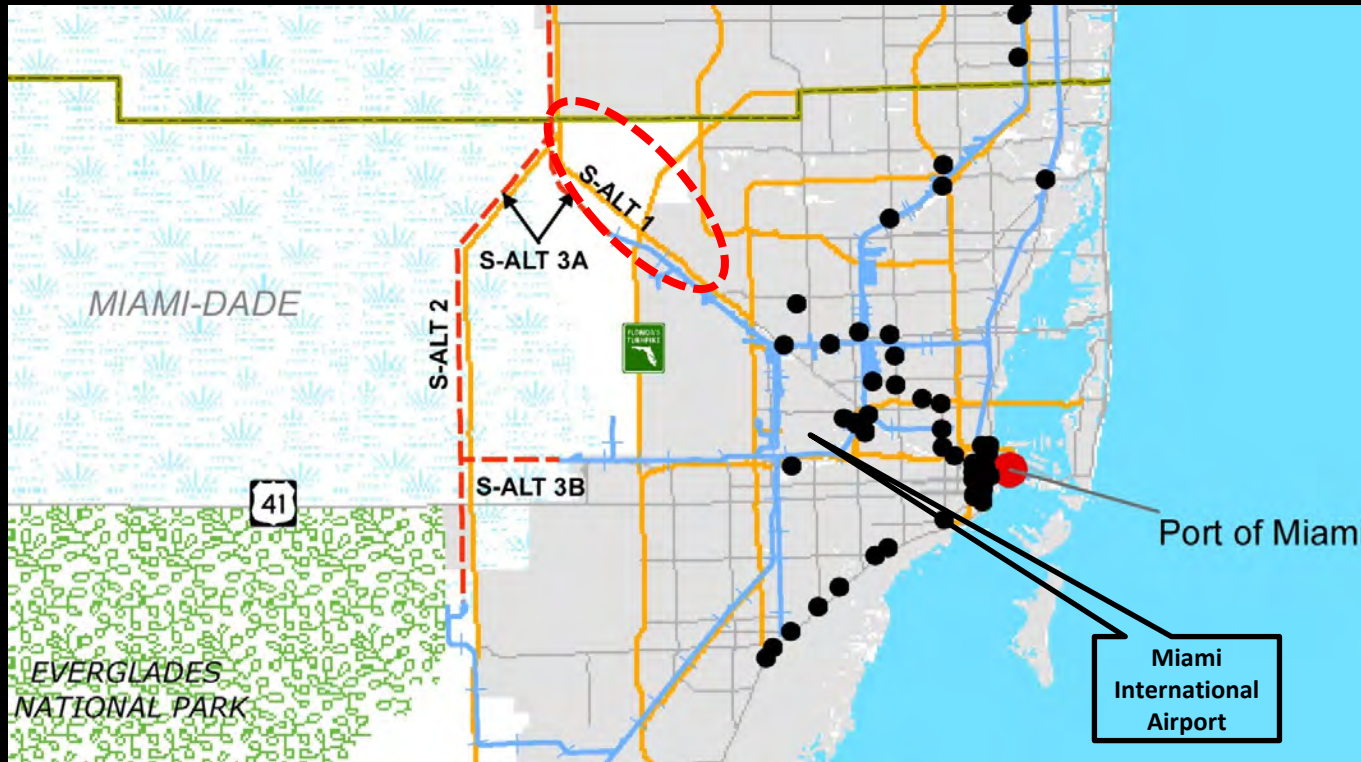
- Add lanes same as “Highway Only” Alternative
- Reconstruct and shift highway within ROW
- Construct single mainline track with five 2-mile siding tracks within ROW



Southern Connection Options

To Belle Glade

To Ft. Lauderdale



- 1 FEC Connection on South Side of US 27
- 2 CSX Connections Along Krome Avenue
- S-ALT 1 FEC Connection, Most Direct Route, Least Cost, Least Environmental Impact, Least Cost, Right-of-Way Is Needed

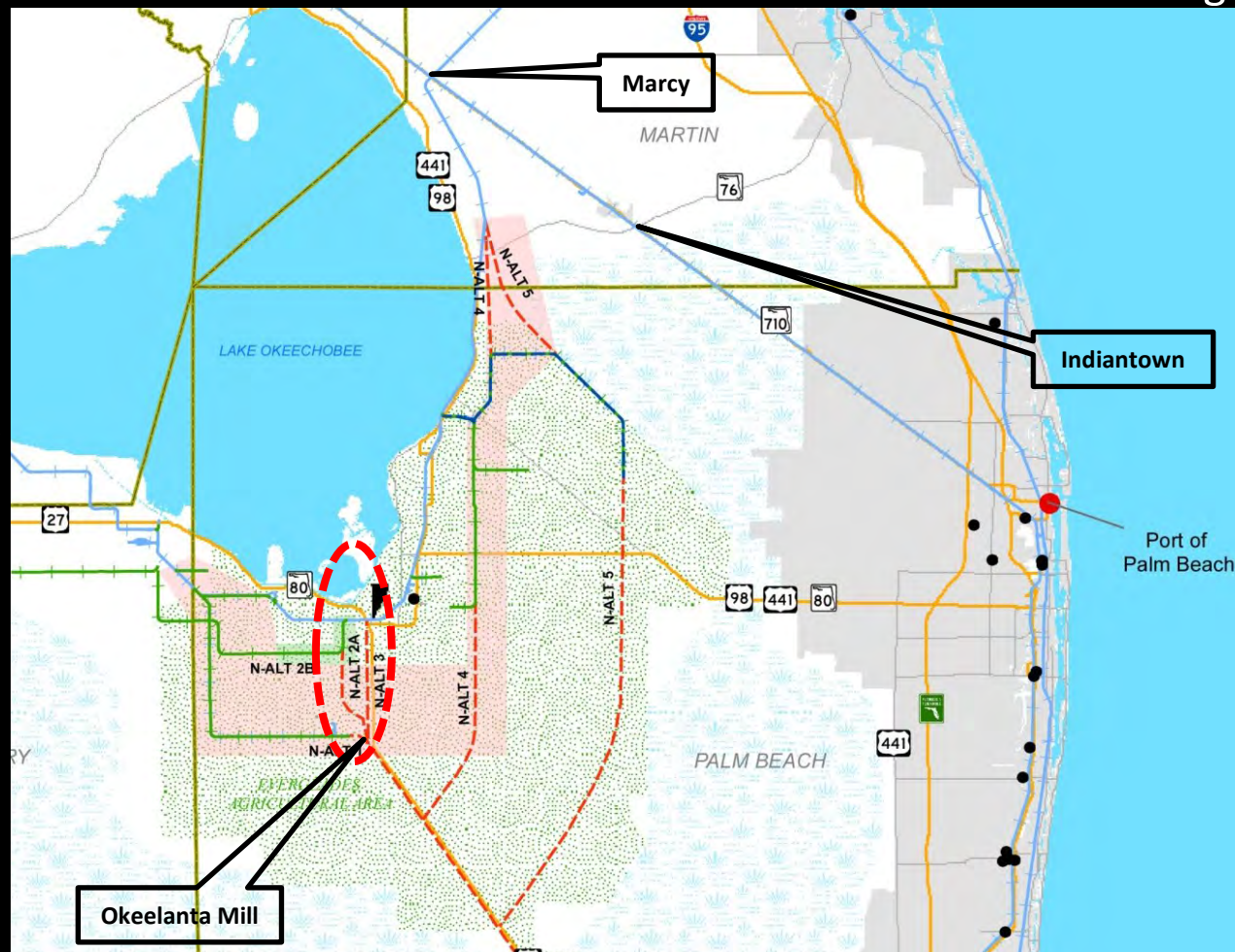
Northern Connection Options

- 5 Options to connect to existing tracks for South Central Florida Express or FEC Railway. N-ALT-2A Least Environmental Impacts, Least Cost, Most Direct Connection Avoiding South Bay

To Sebring &
Orlando

To Fort Pierce

To Sebring &
Orlando



Conclusions of the PACE Study

- US 27 must be widened to accommodate future ILC traffic;
- Potential rail demand estimated at 15 to 22 trains per day;
- **No engineering or environmental fatal flaws** identified for widening US 27 & adding rail; and
- Adding a railroad determined to be **physically feasible**.

Highway Only Alternative (2018)

- 321 Mainline lane miles of highway widening & resurfacing
- 11 new or widened bridges
- 15 intersection improvements
- 2 interchanges & 3 u-turn improvements
- Construction Cost: \$600.1M
- ROW Cost: \$42.5M
- Design & CEI Cost: \$120.0M
- **Total Cost: \$762.7M**

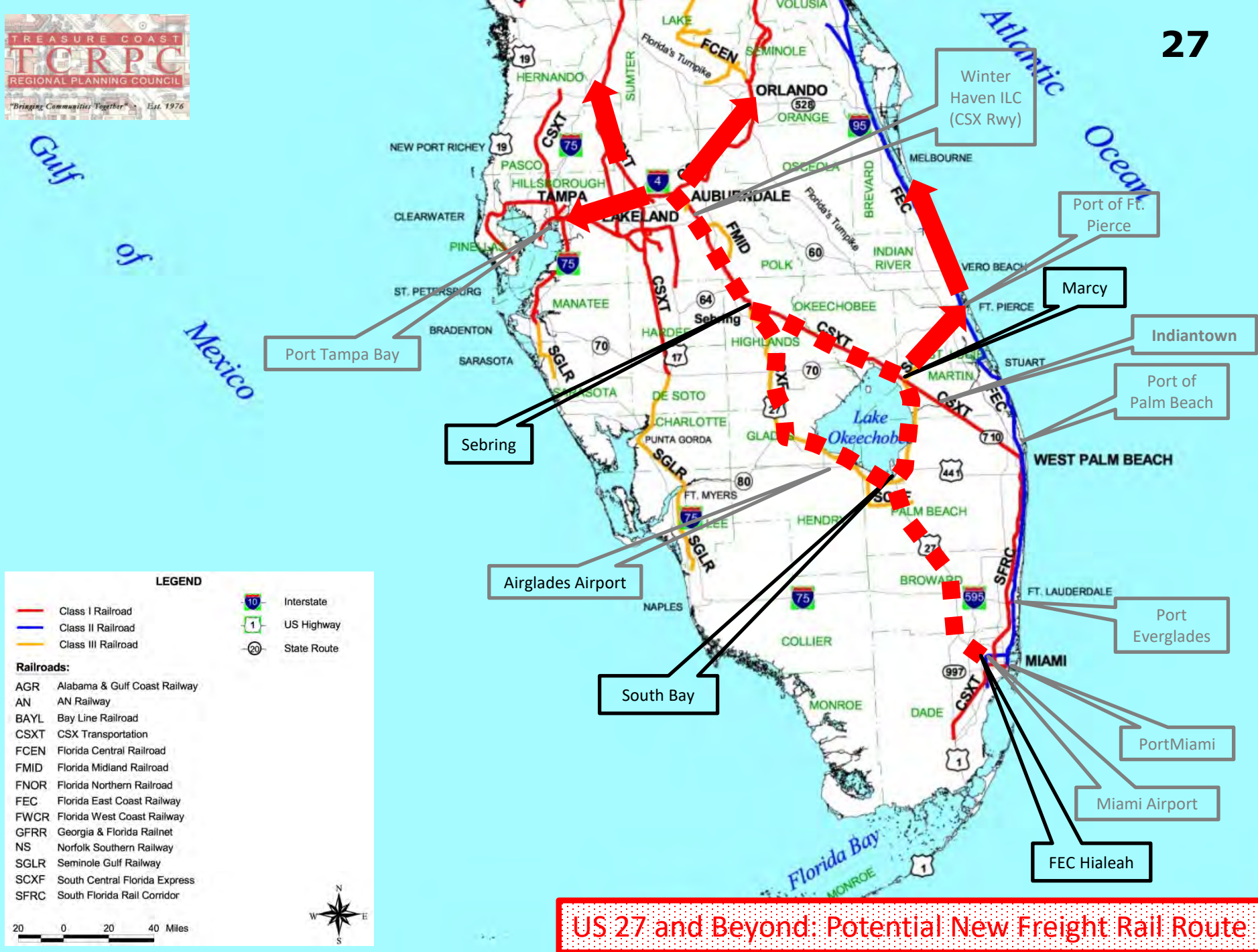
Multimodal Alternative (2018)

- 386 Mainline lane miles of highway widening & reconstruction
- 23 new or widened bridges
- 20 intersection improvements
- 2 interchanges & 3 u-turn improvements
- 75 track-miles of rail
- 10 rail bridges
- Construction Cost: \$965.6M
- ROW Cost: \$87.4M
- Design & CEI Cost: \$193.1M
- **Total Cost: \$1.25B (\$487M more)**
- **\$17 M per Mile (\$6.7M per mile more)**

BUT – Avoided Costs

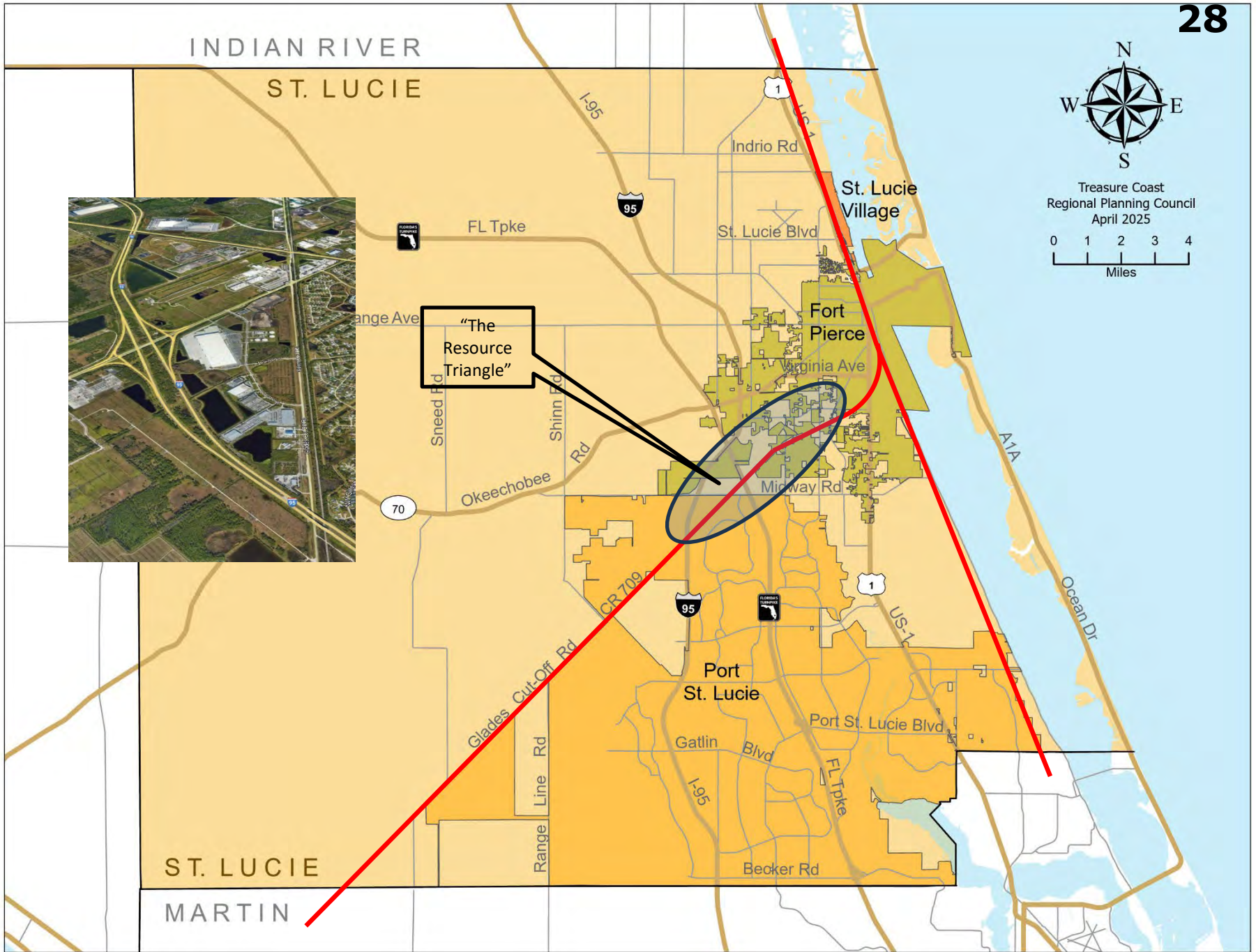
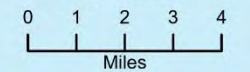
- Numerous Urban Grade Separations
- \$50M ++ each







Treasure Coast
Regional Planning Council
April 2025



INDIAN RIVER
ST. LUCIE


St. Lucie
Village

Fort
Pierce

Port
St. Lucie

ST. LUCIE
MARTIN

Benefits of Moving Forward

- 
- Reducing freight traffic through the population centers of the coast between Ft. Pierce and Miami (80% freight diversion from FEC)
 - Eliminating need for new grade separations along coastal FEC
 - Freeing up capacity on the FEC for commuter passenger trains
 - Diverting truck traffic from I-95, Turnpike, and U.S. 27
 - Providing new transportation without triggering new sprawl
 - Supporting economic development and job creation for the distressed communities along the south, east and west sides of Lake Okeechobee AND along Glades Cutoff in St. Lucie County
 - Providing transportation capacity to support further port growth

Recent Activities

- February 28, 2017 meeting at Port of Palm Beach with:
FEC Railway, Port of Palm Beach, Staff of Congressman Brian Mast,
Palm Beach MPO, Martin County, TCRPC Staff
- April 21, 2017 Presentation to Treasure Coast Regional Planning Council
- June 12, 2017 meeting at SFRPC with:
FEC Railway, Port Everglades, FDOT, Broward MPO, Miami-Dade TPO,
TCRPC, SFRPC and CFRPC Staff, Congressional Staff for Deutch, Mast, and Wilson
Senatorial Staff for Rubio, County Commissioners from Broward and Palm Beach
- Treasure Coast Comprehensive Economic Development Strategy Cmtee.
- MPOAC Freight Committee and Governing Board (July 19, 2017)
- Palm Beach County BDB Logistics Task Force (September 6, 2017)
- Miami-Dade TPO Freight Technical Advisory Committee (Oct. 11, 2017)
- Joint Meeting of the SFRPC and TCRPC (Oct. 20, 2017)
- Martin County Board of County Commissioners (Oct. 24, 2017)
- SEFTC Regional Trans. Technical Advisory Committee (Dec. 13, 2017)
- Joint Meeting of the SFRPC and TCRPC (October 12, 2018)
- Existing Conditions Study (2018)
- SEFTC and TCRPC Resolutions (October 18, 2024)
- Inclusion in 2050 LRTPs for Miami-Dade, Broward, and Palm Beach
- FDOT Scoping Meeting re: US 27 Modal Study (April 2, 2025)
- Seeking inclusion in 20250 LRTP, prioritization of the project and initiation of
PD&E Study



RESOLUTION #24-06

A RESOLUTION OF THE TREASURE COAST REGIONAL PLANNING COUNCIL, REPRESENTING THE LOCAL GOVERNMENTS OF PALM BEACH, MARTIN, ST. LUCIE AND INDIAN RIVER COUNTIES, FLORIDA, URGING THE FLORIDA DEPARTMENT OF TRANSPORTATION TO UNDERTAKE THE NECESSARY STUDIES, INCLUDING A GENERAL MULTI MODAL PLANNING STUDY AND A PROJECT DEVELOPMENT AND ENVIRONMENT (PD&E) STUDY, AND EXPEDITE THE IMPLEMENTATION OF A NEW FREIGHT RAIL ROUTE ALONG THE U.S. HIGHWAY 27 MULTIMODAL CORRIDOR BETWEEN PORTMIAMI AND THE I-4 CORRIDOR; PROVIDING FOR TRANSMITTAL; AND PROVIDING FOR AN EFFECTIVE DATE

WHEREAS, the Treasure Coast Regional Planning Council is a multi-purpose regional governmental entity with policy responsibility in the areas of affordable housing, economic development, emergency preparedness, energy, health, natural resources, urban planning, and regional transportation; and

WHEREAS, the Treasure Coast Regional Planning Council's geographical area is comprised of Indian River, Martin, St. Lucie, and Palm Beach counties and the 52 municipalities contained therein and home to over 2.1 million people; and

WHEREAS, the Strategic Intermodal System (SIS) is Florida's high priority network of transportation facilities important to the state's economy and mobility, the highest priority for transportation capacity investments, and a primary focus for implementing the Florida Transportation Plan (FTP), which is the State's long-range transportation vision and policy plan; and

WHEREAS, U.S. Highway 27, the Florida East Coast (FEC) Railway, the CSX Transportation/South Florida Rail Corridor, I-95, and the Florida Turnpike are included in the SIS network and are listed as Significant Regional Resources and Facilities in the Council's Strategic Regional Policy Plan; and

WHEREAS, Regional Goal 7.1 in the Strategic Regional Policy Plan calls for creation of a balanced and integrated transportation system with; in Strategy 7.1.1, commuter rail service with stations linking the coastal cities and towns of the Region; and

WHEREAS, the Treasure Coast Regional Planning Council recognizes rail as an economically and environmentally valuable form of passenger and freight transportation throughout the Region and the State; and

ly 27 has long been identified by the Florida Department of Transportation
onal transportation planning organizations and providers as an important
reen Miami and Orlando critical for improving Florida's global
omic development, multimodal mobility opportunities, and safety; and

12 conducted a Planning and Conceptual Engineering (PACE) study to
tions to connect PortMiami by rail within inland logistics centers around
western Palm Beach County, this study considered the feasibility of
from congested coastal corridors facilitating the restoration of passenger
IC Railway, and this study identified "no fatal flaws;" and

he project would provide several important regional benefits, including:

t traffic through the population centers of the coast between Ft. Pierce

city on the FEC Railway for commuter passenger trains;
traffic from U.S. Highway 27, I-95, and Florida's Turnpike;
operations by making inland intermodal logistics centers viable;
omic development and job creation for the distressed communities along
and west sides of Lake Okeechobee; and
ortation without triggering sprawl; and

S 27 has been included as an unfunded need in the SIS 2045 Multimodal
and

rail service along the FEC corridor has been restored with Brightline
s connecting Orlando to Miami; and

Jade Department of Transportation and Public Works has been awarded
nistration (FTA) grant to provide commuter passenger rail service on the
3 Aventura to Miami; and

ounty Transit and FDOT District Four are currently working to apply for an
ovide commuter passenger rail service along the FEC corridor from south

of the New River in Fort Lauderdale to Aventura, and have plans to extend passenger rail service
from south of the New River in Fort Lauderdale to the Broward/Palm Beach County line; and

WHEREAS, the Palm Beach Transportation Planning Agency (TPA) has plans to extend passenger
rail service from the Broward/Palm Beach County line to north of West Palm Beach; and

WHEREAS, the Southeast Florida Transportation Council (SEFTC) will include the US 27 Rail
project in its 2050 Regional Transportation Plan and will be considering Resolution 2024-1 on
October 18, 2024 requesting FDOT to undertake a PD&E study for rail along U.S. Highway 27; and

sted that the Miami-Dade TPO, Broward MPO, and Palm Beach TPA will
US 27 Rail project within their planning boundaries in their respective
portation Plans; and

12, 2018, meeting jointly, the Treasure Coast Regional Planning Council
nal Planning Council adopted Resolution TCSF #18-05 which called for the
process to advance the (US 27 Rail) concept, leading to inclusion of
ndertake a PD&E study and construction of a new freight rail route along
ltimodal Corridor between PortMiami and the I-4 Corridor;" and

ificant reasons given above and due to the ever-expanding growth in
ransportation demand in South Florida it is critically important and urgent
ight transportation corridor be created.

IT RESOLVED BY THE TREASURE COAST REGIONAL PLANNING COUNCIL

icitals are declared to be true and correct and are hereby made a part of

again requests that the Florida Department of Transportation undertake
including a General Multi Modal Planning Study and a Project
onment (PD&E) study, leading to expedited construction of a new freight
Highway 27 Multimodal Corridor between PortMiami and the I-4 Corridor
escribed objectives.

Resolution shall be transmitted to the FDOT, St. Lucie TPO, Martin MPO,
tland Regional TPO, SEFTC, South Florida Regional Planning Council,
onal Planning Council, and the Central Florida Regional Planning Council.

on shall be effective upon adoption.

Treasure Coast Regional Planning Council this 18th day of October 2024.

Thomas J. Lanahan
Executive Director

FOR MORE INFORMATION:

THOMAS J. LANAHAN

EXECUTIVE DIRECTOR

TREASURE COAST
REGIONAL PLANNING COUNCIL
(TCRPC)

(772) 221-4060

TLANAHAN@TCRPC.ORG





St. Lucie Transportation
Planning
Organization

Coco Vista Centre
466 SW Port St. Lucie Blvd, Suite 111
Port St. Lucie, FL 34953
772-462-1593 www.stlucietpo.org

AGENDA ITEM SUMMARY

Board/Committee:	Technical Advisory Committee (TAC)
Meeting Date:	July 22, 2025
Item Number:	6b
Item Title:	Reimagine Mobility 2050 Long Range Transportation Plan (LRTP) Development
Item Origination:	2050 LRTP Development Process
UPWP Reference:	Task 3.1 – Long Range Transportation Planning
Requested Action:	Review and recommend adoption of the draft elements, recommend adoption with conditions, or do not recommend adoption.
Staff Recommendation:	It is recommended that the draft Needs Plan of the Reimagine Mobility 2050 LRTP be reviewed and recommended for approval by the TPO Board.

Attachments

- Staff Report
- Reimagine Mobility 2050 LRTP Needs Plan



Coco Vista Centre
466 SW Port St. Lucie Blvd, Suite 111
Port St. Lucie, FL 34953
772-462-1593 www.stlucietpo.org

MEMORANDUM

TO: Technical Advisory Committee (TAC)

THROUGH: Peter Buchwald
Executive Director

FROM: Yi Ding
Transportation Systems Manager

DATE: July 15, 2025

SUBJECT: Reimagine Mobility 2050 Long Range Transportation Plan (LRTP) Development

BACKGROUND

At the March 2025 meetings, the Advisory Committees reviewed and recommended approval of several elements of the Reimagine Mobility 2050 LRTP, prepared by the Corradino Group. Subsequently, the TPO Board approved those elements at its April meeting. One of the key elements was the Preliminary Roadway Deficiencies Map, which serves as the foundation of the Needs Plan and identifies roadways projected to be deficient by the year 2050. Since that time, the 2050 LRTP Needs Plan has been drafted and is now available for review and comment.

ANALYSIS

The Needs Plan identifies the transportation infrastructure necessary to accommodate future travel demand, address safety concerns, and meet the mobility needs of the community over the next 25 years. It serves as a strategic blueprint for how the transportation system should evolve to support projected population growth, economic development, and quality of life improvement throughout the region.

In response to increasing interest and investment in alternative modes of travel, such as walking, bicycling, and transit, the Reimagine Mobility 2050 LRTP takes a comprehensive multimodal approach. Rather than focusing solely

on vehicle traffic, the Needs Plan addresses the diverse needs of pedestrians, bicyclists, transit riders, and motorists, aiming to create a more inclusive, balanced, and efficient transportation system. This approach helps ensure access and mobility for people of all ages, abilities, and income levels.

The Needs Plan is fiscally unconstrained, meaning it does not consider funding limitations when identifying potential improvements. This allows for a comprehensive assessment of long-term transportation needs across all modes. The Needs Plan then serves as the foundation for developing the Cost Feasible Plan, which filters and prioritizes projects based on the funding expected to be available over the 25-year planning horizon.

The attached 2050 LRTP Needs Plan provides details on the Roadway Needs Plan, as well as the Bicycle and Micromobility Facilities Needs Plan, Pedestrian Needs Plan, Transit Needs Plan, and Safety Needs Plan.

RECOMMENDATION

It is recommended that the draft Needs Plan of the Reimagine Mobility 2050 LRTP be reviewed and recommended for approval by the TPO Board.



ST. LUCIE TPO
2050 LONG RANGE TRANSPORTATION PLAN
Transportation Needs Assessment
July 2025



St. Lucie

Transportation
Planning
Organization



CORRADINO

Table of Contents

1.1 Introduction	1
1.2 Baseline Projects	1
1.3 Growth Forecast	5
1.4 Roadway Needs Plan	8
1.5 Multimodal Needs Plan	16
1.5.1 Pedestrian Facilities Needs Plan	16
1.5.2 Bicycle and Micromobility Facilities Needs Plan	23
1.6 Transit Needs Plan	31
1.7 Safety Needs Plan	35

List of tables

Table 1: TIP FY 2025/26 to 2029/30	2
Table 2: Existing and Committed roadway projects including developer roads	4
Table 3: Forecasted Population and Employment Growth, 2020 to 2050	5
Table 4: Roadway Needs Projects	10
Table 5: Pedestrian Facilities Needs Projects	17
Table 6: Bicycle and Micromobility Facilities Needs Plan	24
Table 7: Transit Projects Needs Plan	31
Table 8: Safety Projects Needs Plan	35

List of Figures

Figure 1: St Lucie Population growth from 2020 to 2050	6
Figure 2: St Lucie Employment growth from 2020 to 2050	7
Figure 3: Volume-to-Capacity Ratio	9
Figure 4: Roadway Needs Project Plans	15
Figure 5: Pedestrian Facilities Needs Plan	22
Figure 6: Bicycle and Micromobility Facilities Needs Plan	30
Figure 7: Transit Projects Needs Plan	34
Figure 8: Safety Projects Needs Plan	37

1.1 Introduction

The Needs Plan identifies the transportation infrastructure necessary to accommodate future travel demand, address safety concerns, and meet the mobility needs of the community over the next 25 years. It serves as a strategic blueprint for how the transportation system should evolve to support projected population growth, economic development, and quality of life improvement throughout the region.

In response to increasing interest and investment in alternative modes of travel, such as walking, bicycling, and transit, the Reimagine Mobility 2050 Long Range Transportation Plan (LRTP) takes a comprehensive multimodal approach. Rather than focusing solely on vehicle traffic, the Needs Plan addresses the diverse needs of pedestrians, bicyclists, transit riders, and motorists, aiming to create a more inclusive, balanced, and efficient transportation system. This approach helps ensure access and mobility for people of all ages, abilities, and income levels.

The Needs Plan is fiscally unconstrained, meaning it does not consider funding limitations when identifying potential improvements. This allows for a comprehensive assessment of long-term transportation needs across all modes. The Needs Plan then serves as the foundation for developing the Cost Feasible Plan, which filters and prioritizes projects based on the funding expected to be available over the 25-year planning horizon.

The 2050 LRTP Needs Plan provides details on the Roadway Needs Plan, as well as the Bicycle Needs Plan, Pedestrian Needs Plan, Transit Needs Plan, and Safety Needs Plan.

1.2 Baseline Projects

The first five years of the long-range transportation plan, outlined in the Transportation Improvement Program (TIP), form the basis for the Reimagine Mobility 2050 plan. The TIP lists prioritized projects—such as roads, sidewalks, transit, and other improvements—planned for FY 2025/26 to 2029/30. These projects are assumed to be completed and serve as the foundation for addressing future needs. Project details are provided in Tables 1 and 2.

Table 1: TIP FY 2025/26 to 2029/30

Project Number	Project Name	Project Limits From	Project Limits To	Description
4491791	A1a Big Mud Creek and Blind Creek Bridges	Big Mud Creek Bridge	Blind Creek Bridge	Bridge Replacement
4533261	California Blvd	Del Rio Blvd	Crosstown Parkway	Add Lanes & Reconstruct
4400321	FEC Overpass	Savannas Recreation Area	South Of Savannah Rd	Bike Path/Trail
4534931	Green River Parkway Trail	Walton Road	Martin County Line	Bike Path/Trail
4383792	Kings Highway	North Of Commercial Circle	St Lucie Blvd	Add Lanes & Reconstruct
4383791	Kings Highway	Sr-9/1-95 Overpass	North Of Commercial Circle	Add Lanes & Reconstruct
4383794	Kings Highway	N Of 1-95 Overpass	South Of Angle Rd	Add Lanes & Reconstruct
4383793	Kings Highway	St Lucie Boulevard	South Of Indrio Rd	Add Lanes & Reconstruct
4383795	Kings Highway	S Of Angle Road	North Of Commercial Circle	Add Lanes & Reconstruct
4529961	Marshfield Ct	Dreyfuss Blvd	Hayworth Ave	Sidewalk
2314404	Midway Rd	Jenkins Rd	Glades Cut Off Rd	Add Lanes & Reconstruct
2314405	Midway Rd	Jenkins Rd	Selvitz Rd	Add Lanes & Reconstruct
4534921	Nebraska Ave	Lawnwood Cir	13th Street	Sidewalk
4435061	North Sr-A1a Suntrail	Ft Pierce Inlet State Park	SLC/Indian River County Line	Bike Path/Trail
4461681	Orange Ave	Kings Hwy	East Of 1-95 Sb Ramp	Interchange Add Lanes
4496961	Orange Ave	Kings Hwy	Us Highway 1	ATMS Arterial Traffic MGMT
4473991	Port Of Fort Pierce Connector	Dixie Hwy	2nd St At Fishermans Wharf	Bike Path/Trail
4317523	Port St. Lucie Blvd	Becker Rd	Paar Dr	Add Lanes & Reconstruct

Project Number	Project Name	Project Limits From	Project Limits To	Description
4534911	St. James Dr	Lazy River Pkwy	Royce Ave	Sidewalk
4548801	Sunrise Blvd	Bell Ave	Nslwcd Canal 15	Sidewalk
4518581	Turnpike At Midway Rd	Southern Ramps Interchange	Southern Ramps Interchange	New Interchange Ramp
4465831	Turnpike Widening	Crosstown Pkwy	Okeechobee Rd	Add Lanes & Reconstruct
4463341	Turnpike Widening	Martin C/L	Becker Rd	Add Lanes & Reconstruct
4463351	Turnpike Widening	Becker Rd	Crosstown Pkwy	Add Lanes & Reconstruct
4508611	Volucia Dr	East Torino Pkwy	West Blanton Blvd	Sidewalk

Table 2: Existing and Committed roadway projects including developer roads

Project Number	Project Name	Project Limits From	Project Limits To	Description
108	Arterial A	Glades Cut-Off Road	Midway Road	New 2 Lanes
123	Arterial A/Wylder Parkway	Midway Road	0.5 mile north	New 4 Lanes
109	Becker Road	Range Line Road	N-S Road B	New 2 Lanes
163	Becker Road	N-S Road B	Village Parkway	New 4 Lanes
21107	Becker Road	South Bend Blvd	Gilso Road	Widening from 2 to 4 lanes
161	California Boulevard	Del Rio Boulevard	Crosstown Parkway	Widen 2L to 4L
111	Crosstown Parkway	Range Line Road	Village Parkway	New 4 Lanes
21201	Glades Cut Off Road	Range Line Road	Soli Boulevard	Widen 2L to 4L
21105	Indrio Road	west of I-95	US-1	Widening from 2 to 4 lanes
8000	Kings Highway	Orange Avenue	Angle Road	Widen 2L to 4L
8005	Koblegrad Road	W Angle Road	Indrio Road	New 2 Lanes
143	Midway Road	Glades Cut-Off Road	Selvitz Road	Widen 2L to 4L
8007	Midway Road	LTC Parkway	Okeechobee Road	Widen 2L to 4L
126	Open View Drive (West)	N-S Road A	Village Parkway	New 2 Lanes
127	Paar Drive (West)	N-S Road A	Village Parkway	New 2 Lanes
160	Port St Lucie Boulevard	Becker Road	Paar Drive	Widen 2L to 4L and reconstruct
21104	Port St. Lucie Blvd	Darwin Blvd	Becker Road	Widening from 2 to 4 lanes
128	Range Line Road	Glades Cut Off Road	Soli Boulevard	New 2 Lanes
8006	Selvitz road	Glades Cut Off Road	Edwards Road	Widen 2L to 4L
21205	St. Lucie West Blvd	Commerce Centre Dr.	Cashmere Blvd	Road Widening, I-95 interchange improvement, add turning lane
121	Tradition Parkway	Range Line Road	SW Stony Creek Way	New 2 Lanes
9001	Turnpike at Midway Road			New Interchange
143	West Midway Road	Glades Cut Off Road	Jenkins Road	Widen 2L to 4L and reconstruct
131	Williams Extension	McCarty Road	Glades Cut-Off Road	New 2 Lanes

1.3 Growth Forecast

St. Lucie County's rapid growth is driving increased demand on transportation infrastructure. Based on demographic and employment trends, projections for 2050 show the population doubling (101% increase) and employment rising by 100%. Table 3 details these forecasts, drawn from the Bureau of Economic and Business Research (BEBR)'s high projections, emphasizing the need for strategic investment in transportation to manage congestion, maintain safety, and preserve quality of life. Figure 1 and Figure 2 illustrate the population growth and employment growth for 2050. The St. Lucie TPO Board has adopted these control totals and the socioeconomic data forecasts at its April 2025 meeting.

Table 3: Forecasted Population and Employment Growth, 2020 to 2050

	Population	Total Employment
2020	326,451	133,019
2050	655,403	266,471
Total Growth	328,952	133,452
Percent Growth	101%	100%

St. Lucie 2050 Population Growth

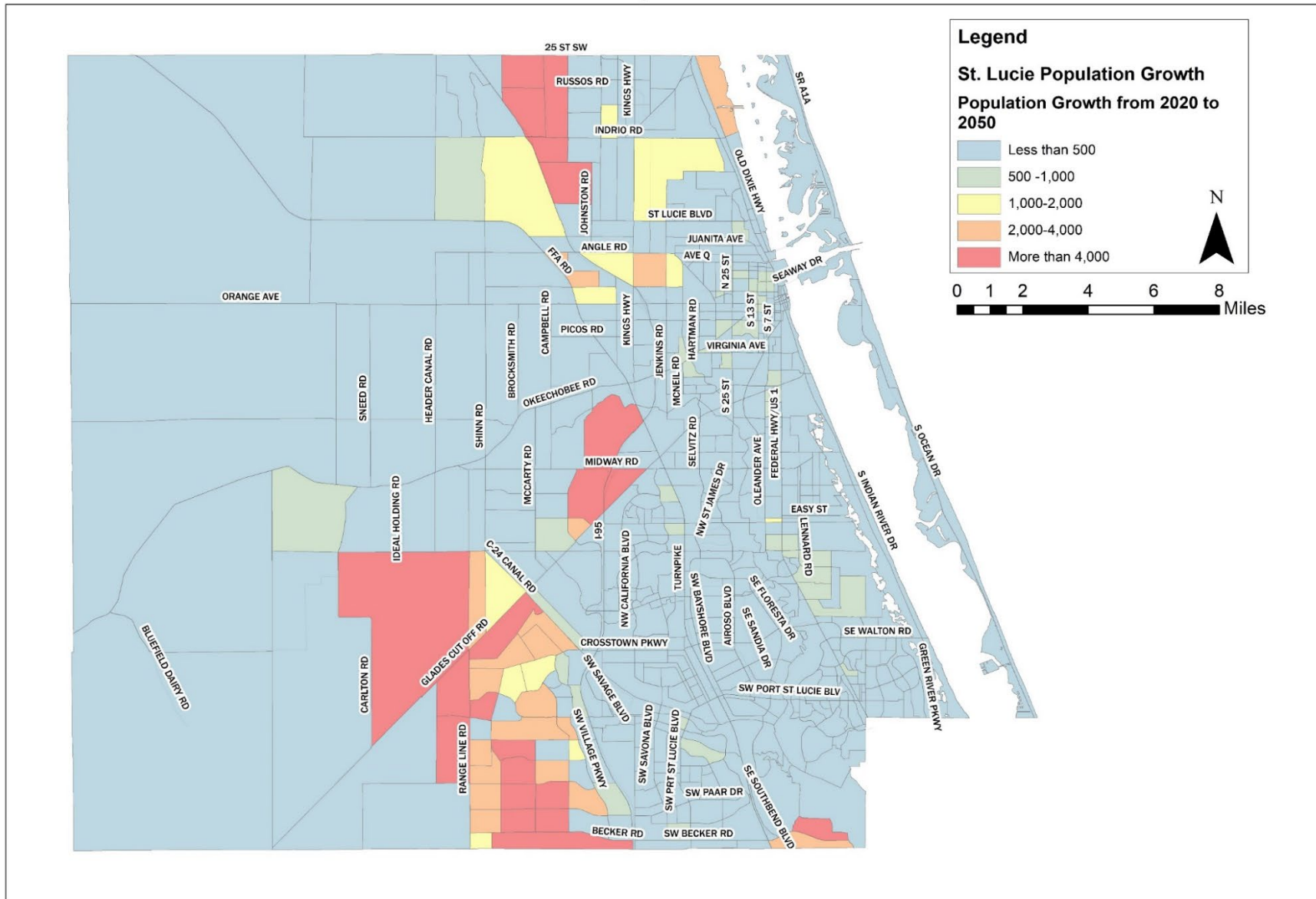


Figure 1: St Lucie Population growth from 2020 to 2050

St. Lucie 2050 Employment Growth

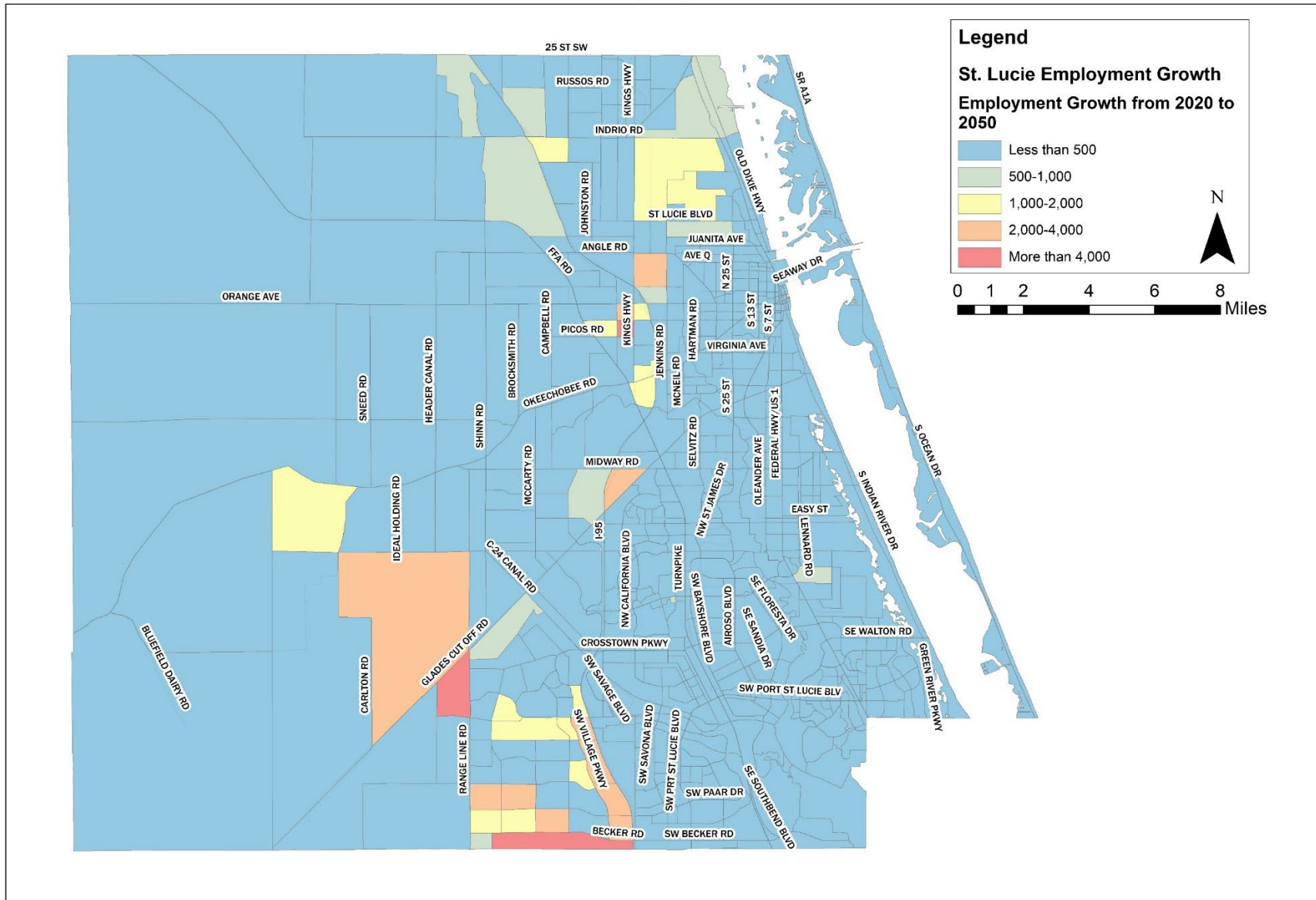


Figure 2: St Lucie Employment growth from 2020 to 2050

1.4 Roadway Needs Plan

The identification of transportation system capacity deficiencies was evaluated to identify the initial roadway needs for the St. Lucie 2050 LRTP, Reimagine Mobility 2050. The Treasure Coast Regional Transportation Model version 6 (TCRPM6) was utilized to forecast future transportation conditions, aided by socioeconomic data and roadway network attributes. TCRPM6 is a regional travel demand model that includes the three Treasure Coast Counties (Martin, St. Lucie, and Indian River Counties). This was developed by the Florida Department of Transportation (FDOT) District Four, in coordination with the three Treasure Coast MPOs. Like the previous TCRPM5 model, TCRPM6 is an activity-based model (ABM). TCRPM6 includes the model base year of 2020, which contains roadways and conditions as they existed in 2020.

The first step in developing a roadway needs plan is to identify transportation capacity deficiencies. To develop capacity deficiencies, an existing plus committed (E+C) transportation network was developed for 2029/2030 roadway conditions. This includes all the existing roadway projects and the currently programmed transportation improvement program (TIP) projects between 2024 and 2029/2030 conditions. The E+C roadway network and the 2050 socioeconomic data were used in developing the transportation demand model projections for the E+C scenario.

Volume-to-capacity (V/C) ratios were examined to identify roadway deficiencies resulting from the growth in travel demand over the 25 years. Road segments that have V/C ratios greater than 1.0 were classified as deficient. Deficient roadways are candidates for potential improvements or indicators that parallel network enhancements are essential.

Figure 3 illustrates the 2050 Volume-to-Capacity ratio projections based on the E+C modeling scenario.

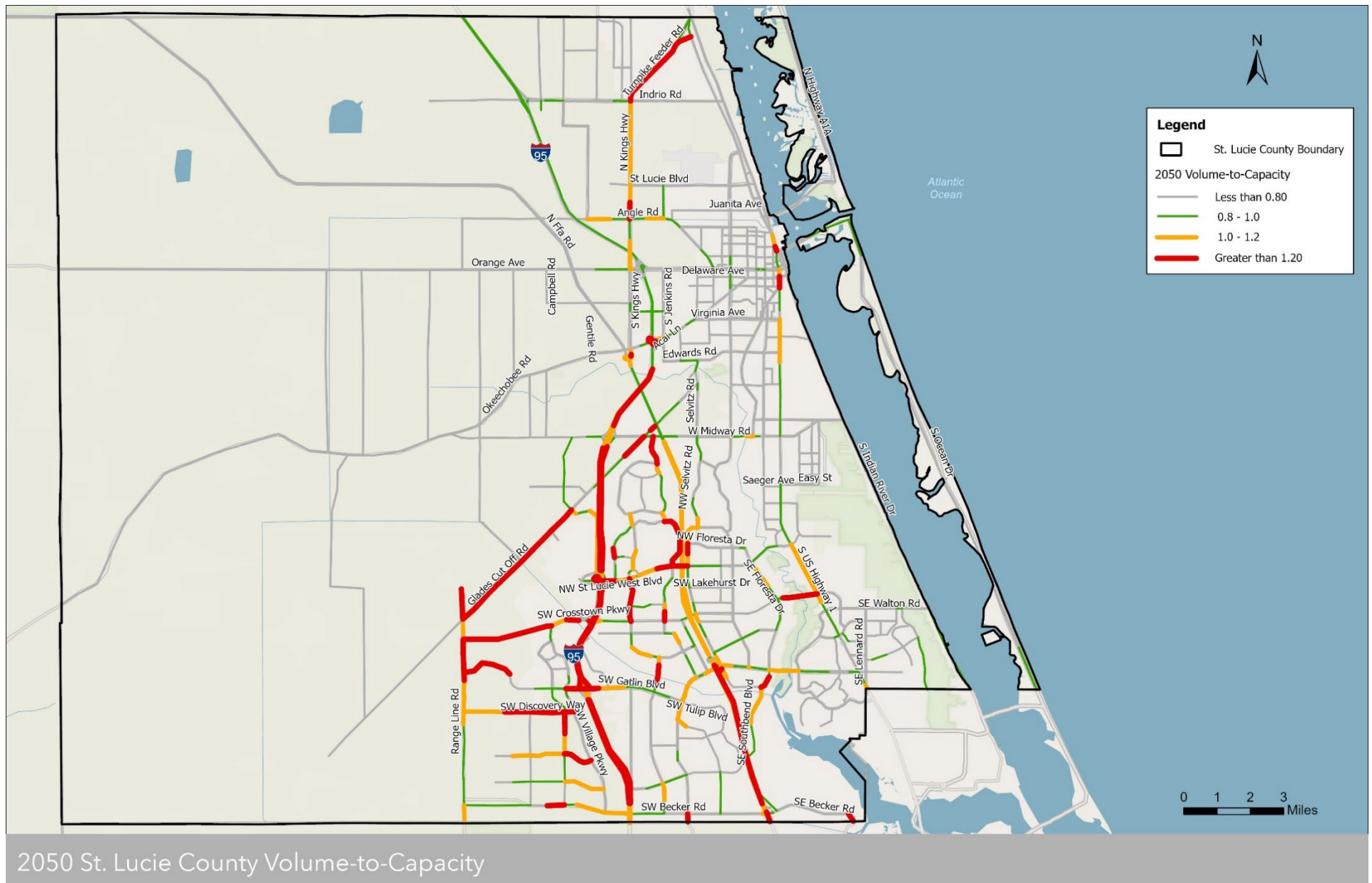


Figure 3: 2050 Volume-to-Capacity Ratio Map

The needs plan includes projects in several categories, as solutions to the congested corridors in the E+C scenario:

- **Widen Existing Roads:** Add more lanes to current roads (e.g., "Widen 2L to 4L").
- **New Roadway/Connectors:** Build new roads to improve connectivity or create alternate routes.
- **Two Lanes Divided:** Construct two-lane roads with medians, expandable to four lanes later.
- **Complete Streets:** Add features like wider sidewalks and bike lanes alongside roadway upgrades.
- **New Interchanges:** Build interchanges for better access to major highways such as I-95 or the Florida Turnpike.

See Table 4 for the full project list and Figure 4 for project locations.

The projects were verified for planning consistency using various sources, including the TPO's Smart Moves 2045 LRTP Cost Feasible Plan, the FDOT/ Florida Turnpike Strategic Intermodal System (SIS) Cost Feasible and Needs Plans, and the local mobility/comprehensive plans.

Table 4: Roadway Needs Plan

Project ID	Roadway Name	From	To	Project Type
1001	Airport Connector	Johnston Road	Kings Highway	New 4 Lanes
1002	Airport Connector	I-95	Johnston Road	New 4 Lanes
1003	Arterial A	Glades Cut-Off Road	Midway Road	Widen 2L to 4L
1004	Bayshore Boulevard	Mountwell St	Port St Lucie Boulevard	Two Lane Divided
1005	Bayshore Boulevard	Prima Vista Boulevard	Selvitz Road	Two Lane Divided
1006	Bayshore Boulevard	Selvitz Road	St James Drive	Two Lanes Divided
1007	Bayshore Boulevard	St. Lucie West Boulevard	Selvitz Road	Widen 2L to 4L
1008	Becker Road	Range Line Road	N-S Road B	Widen 2L to 4L
1009	Becker Road	N-S Road B	Village Parkway	Widen 4L to 6L
1010	California Boulevard	Cameo Boulevard	Savona Boulevard	Two Lanes Divided
1011	California Boulevard	Crosstown Parkway	St Lucie West Boulevard	Widen 2-4 Lanes & Complete Street
1012	California Boulevard	Savona Boulevard	Del Rio Boulevard	Two Lanes Divided

Project ID	Roadway Name	From	To	Project Type
1013	California Boulevard	Savona Boulevard	Del Rio Boulevard	Widen 2L to 4L
1015	Cascade Road Extension	Cascade Road	Rosser Boulevard	New Road
1016	Cashmere Boulevard	Crosstown Parkway	St Lucie West Boulevard	Two Lanes Divided
1017	Cashmere Boulevard	Del Rio Boulevard	Crosstown Parkway	Two Lanes Divided
1018	Cashmere Boulevard	Peacock Boulevard	Torino Parkway	Two Lanes Divided
1019	Cashmere Boulevard	Pleasant Grove Way	Peacock Boulevard	Two Lanes Divided
1020	Commerce Center Drive	St Lucie West Boulevard	Glades Cut-Off Road	Widen 2-4 Lanes & Complete Street
1022	Community Boulevard	Tradition Parkway	Discovery Way	Widen 2-4 Lanes & Complete Street
1023	Community Boulevard	Becker Road	Discovery Way	Widen 2L to 4L
1024	Crosstown Parkway Extension	Glades Cut-Off Road	Range Line Road	New Road
1025	Del Rio Boulevard	California Boulevard	Current Terminus	Two Lanes Divided
1026	Del Rio Boulevard	Port St Lucie Boulevard	California Boulevard	Two Lanes Divided
1028	Discovery Way	N-S Road B	Village Parkway	Widen 2L to 4L
1031	E-W Road 6	Shinn Road	Glades Cut-Off Road	New 4 Lanes Road
1032	East Torino Parkway	NW Cashmere Boulevard	Midway Road	Widen 2L to 4L
1033	Fern Lake Drive	Tradition Parkway	Westcliff Lane	New Road
1034	Floresta Drive	Crosstown Parkway	Prima Vista Boulevard	Two Lanes Divided
1035	Floresta Drive	Elkcam Waterway	Crosstown Parkway	Two Lanes Divided
1036	Floresta Drive	Oaklyn Street	Elkcam Waterway	Two Lanes Divided
1037	Floresta Drive	Prima Vista Boulevard	Airosa Boulevard	Two Lanes Divided
1038	Gig Place Extension	Port St Lucie Boulevard	Galibreath Avenue	New Road
1039	Glades Cut Off Road	Range Line Rd	Selvitz Road	Widen 2L to 4L
1040	I-95	Martin/St. Lucie County Line	south of Okeechobee Road	Widen 6L to 8L
1042	Jenkins Road	Altman Road	Orange Avenue	Widen 2L to 4L

Project ID	Roadway Name	From	To	Project Type
1043	Jenkins Road	Orange Avenue	N Jenkins Road	Widen 2L to 4L
1044	Jenkins Road	N Jenkins Road	St. Lucie Boulevard	New 4 Lanes
1045	Jenkins Road	Midway Road	Post Office Road	Widen 2L to 4L
1046	Jenkins Road	Post Office Road	Glades Cut-Off Road	New 4 Lanes
1047	Jenkins Road	Glades Cut-Off Road	Walmart Distribution Center	Widen 2L to 4L
1048	Jenkins Road	Walmart Distribution Center	Altman Road	New 4 Lanes
1049	Kings Highway	South of Indrio Road	US-1	Widen 2L to 4L
1050	Kings Highway	St. Lucie Boulevard	south of Indrio Road	Widen 2L to 4L
1051	McCarty Road	Glades Cut-Off Road	Williams Road	Widen 2L to 4L
1052	McCarty Road	Williams Road	Midway Road	Widen 2L to 4L
1053	N-S Road A	Crosstown Parkway Extension	Village Parkway Extension	New Road
1054	N-S Road A	Becker Road	Crosstown Parkway	New 4 Lanes
1055	N-S Road B	Becker Road	Discovery Way	Widen 2L to 4L
1056	Newell Road	Shinn Road	Arterial A	New 4 Lanes
1057	North-Mid County Connector	Orange Avenue	Florida's Turnpike	New 4 Lanes
1058	North-Mid County Connector	Okeechobee Road	Orange Avenue	New 4 Lanes
1059	North-Mid County Connector	Midway Road	Okeechobee Road	New 4 Lanes
1060	Northern Connector	Florida's Turnpike	I-95	New 4 Lanes
1061	NW Cashmere Boulevard	Swan Lake Circle	East Torino Parkway	Widen 2L to 4L
1062	Oakridge Drive	SE Oaklyn Street	SW Mountwell Street	Two Lanes Divided
1063	Open View Drive (West)	N-S Road A	Village Parkway	Widen 2L to 4L
1064	Open View Drive (West)	Range Line Road	N-S Road A	New 2 Lanes
1065	Paar Drive (West)	N-S Road A	Village Parkway	New 4 Lanes
1066	Paar Drive (West)	Range Line Road	N-S Road A	New 2 Lanes
1067	Peacock Boulevard	Piazza Drive	NW Mercantile Pl	Two Lanes Divided
1068	Port St Lucie Boulevard	C-23 Canal	Abraham Avenue	Widen 2-4 Lanes & Complete Street

Project ID	Roadway Name	From	To	Project Type
1070	Range Line Road	Glades Cut-Off Road	Midway Road	New 4 Lanes
1071	Savage Boulevard	Gatlin Boulevard	Current Terminus	Two Lanes Divided
1072	Savage Boulevard Extension	Current Terminus	Del Rio Boulevard	New Road
1073	Savona Boulevard	Gatlin Boulevard	California Boulevard	Two Lanes Divided
1074	Savona Boulevard	Gatlin Boulevard	California Boulevard	Widen 2L to 4L
1076	Selvitz Road	Bayshore Boulevard	Midway Road	Two Lanes Divided
1077	Selvitz Road	Bayshore Drive	Milner Drive	Widen 2L to 4L
1078	Shinn Road	Glades Cut Off Road	Midway Road	New 4 Lanes
1079	Southbend Boulevard	Becker Road	Port St. Lucie Boulevard	Widen 2L to 4L
1080	St Lucie West Boulevard	Peacock Boulevard	California Boulevard	Widen 4-6 Lanes & Complete Street
1081	St. Lucie West Boulevard	E of I-95	Cashmere Boulevard	Widen 4L to 6L
1083	Torino Parkway (East)	Cashmere Boulevard	Midway Road	Two Lanes Divided
1084	Trade Center/Tom Mackie	Village Parkway	Discovery Way	New 2 Lanes
1085	Tradition Parkway	Range Line Road	SW Stony Creek Way	New 4 Lanes
1086	Tradition Parkway Extension	Glades Cut-Off Road	Range Line Road	New Road
1087	Tulip Boulevard	Gatlin Boulevard	Pierson Road	Two Lanes Divided
1088	Tunis Avenue Extension	Port St Lucie Boulevard	Filmore Street	New Road
1090	Village Green Drive	Walton Road	Tiffany Avenue	Two Lanes Divided
1091	Village Parkway	Becker Road	Discovery Way	Widen 4L to 6L
1092	Village Parkway Extension	Crosstown Parkway	Glades Cut Off Road	New Road
1093	Westcliffe Lane	N-S Road A	SW Tremonte Avenue	New 4 Lanes
1094	Williams Extension	McCarty Road	Glades Cut-Off Road	Widen 2L to 4L
1095	Williams Road	McCarthy Road	Midway Bypass Greenway	New Road
1096	Williams Road	Shinn Road	McCarty Road	New 2 Lanes
1099	Florida Turnpike	Indian River County Line	Martin County Line	Widen 4L to 6L
1100	Range Line Road	Glades Cut Off Road	Martin County Line	Widen 2L to 4L
1101	Marshall Parkway Extension	SW Village Parkway	I-95	New Road

Project ID	Roadway Name	From	To	Project Type
1102	NW Gilson Road	SE Becker Road	Martin County Line	Widen 2L to 4L
1103	SW Cashmere Boulevard	St Lucie West Boulevard	Widen 2-4 Lanes & Complete Street	Widen 2L to 4L
1105	US 1	North Causeway	Sunrise Boulevard	Widen 4L to 6L
1106	Kings Highway	St. Lucie Boulevard	W Angle Road	Widen 2L to 4L
1097	Turnpike @ N Connector			New Interchange
1098	Turnpike @ Midway			New Interchange
1099	I-95 @ N Connector			New Interchange
1107	I-95 @ Marshall			New Interchange

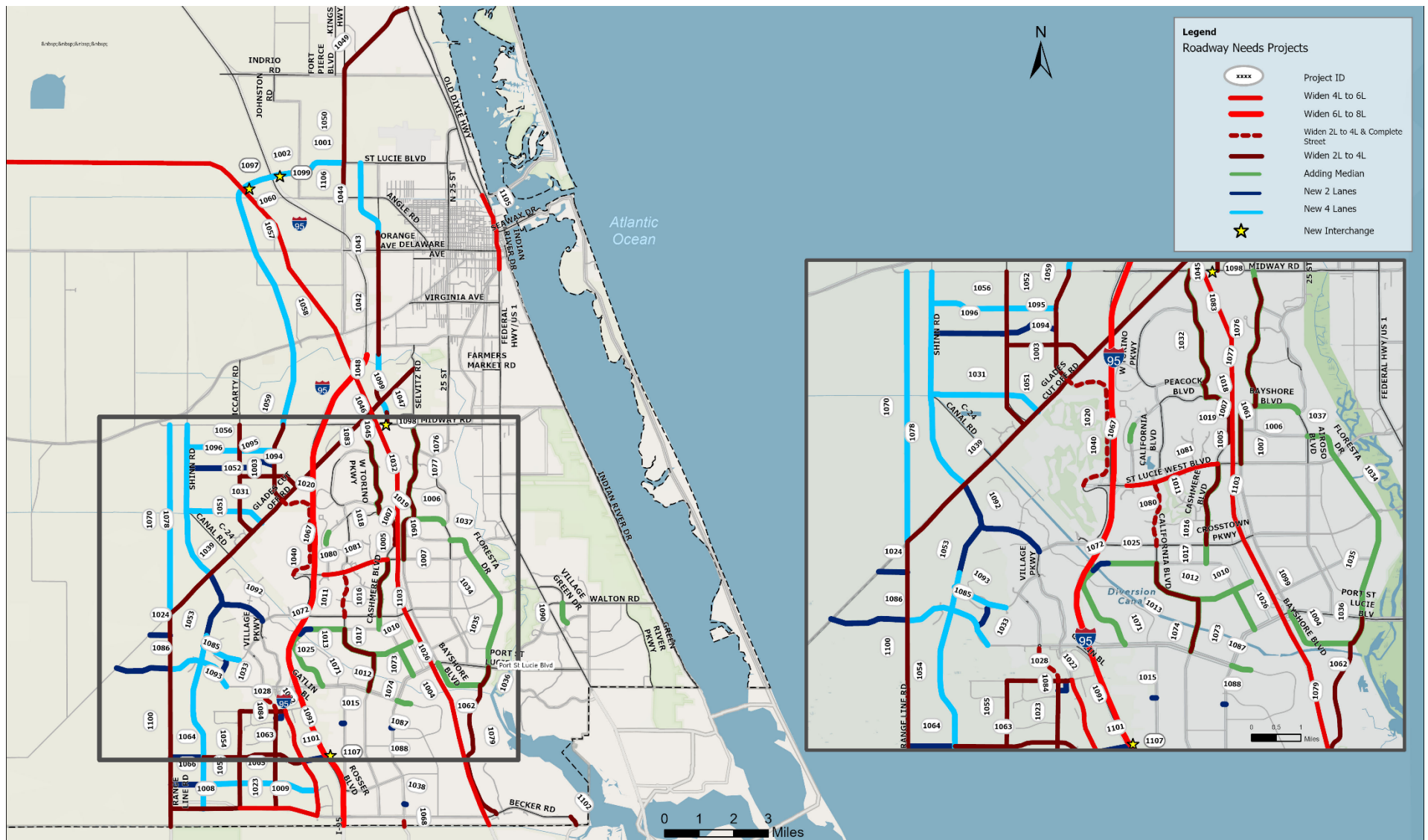


Figure 4: Roadway Needs Plan

1.5 Multimodal Needs Plan

1.5.1 Pedestrian Facilities Needs Plan

The Pedestrian Facilities Needs Plan outlines a strategy for improving pedestrian safety and connectivity in St. Lucie TPO area. The plan is informed by the Smart Moves 2045 LRTP, targeted safety analyses, and the draft 2025 St. Lucie Walk-Bike Network. Its objectives include addressing sidewalk network gaps and applying safety enhancements at locations identified as priorities.

Project selection and ranking followed a needs assessment process aimed at increasing safety and connectivity. This process included:

- **Safety Analysis:** Examination of pedestrian crash data to identify corridors and intersections with recurring safety issues, with projects prioritized accordingly.
- **Network Gap Analysis:** Assessment of existing sidewalks and pathways to determine missing connections, especially where routes serve destinations such as transit stops, schools, parks, and commercial areas.
- **Disadvantaged Community Considerations:** Analysis to ensure that selected projects address the requirements of underserved and transit-dependent populations.

To address these needs, the following facility types are defined:

- **Pedestrian Facilities:** Projects involving new sidewalk construction, rehabilitation of current paths, and installation of features such as improved lighting and accessible curb ramps.
- **Sidewalks:** Paved walkways parallel to roadways, providing pedestrians a separated route from vehicle traffic.
- **Greenways:** Shared-use paths, often in parks or natural corridors, separated from roadways and used for both transportation and recreation.
- **Boardwalks:** Elevated wooden walkways, typically placed near water or wetlands to enable pedestrian access.

Table 5 contains a detailed project list and priorities, with locations shown in Figure 5.

Table 5: Pedestrian Facilities Needs Plan

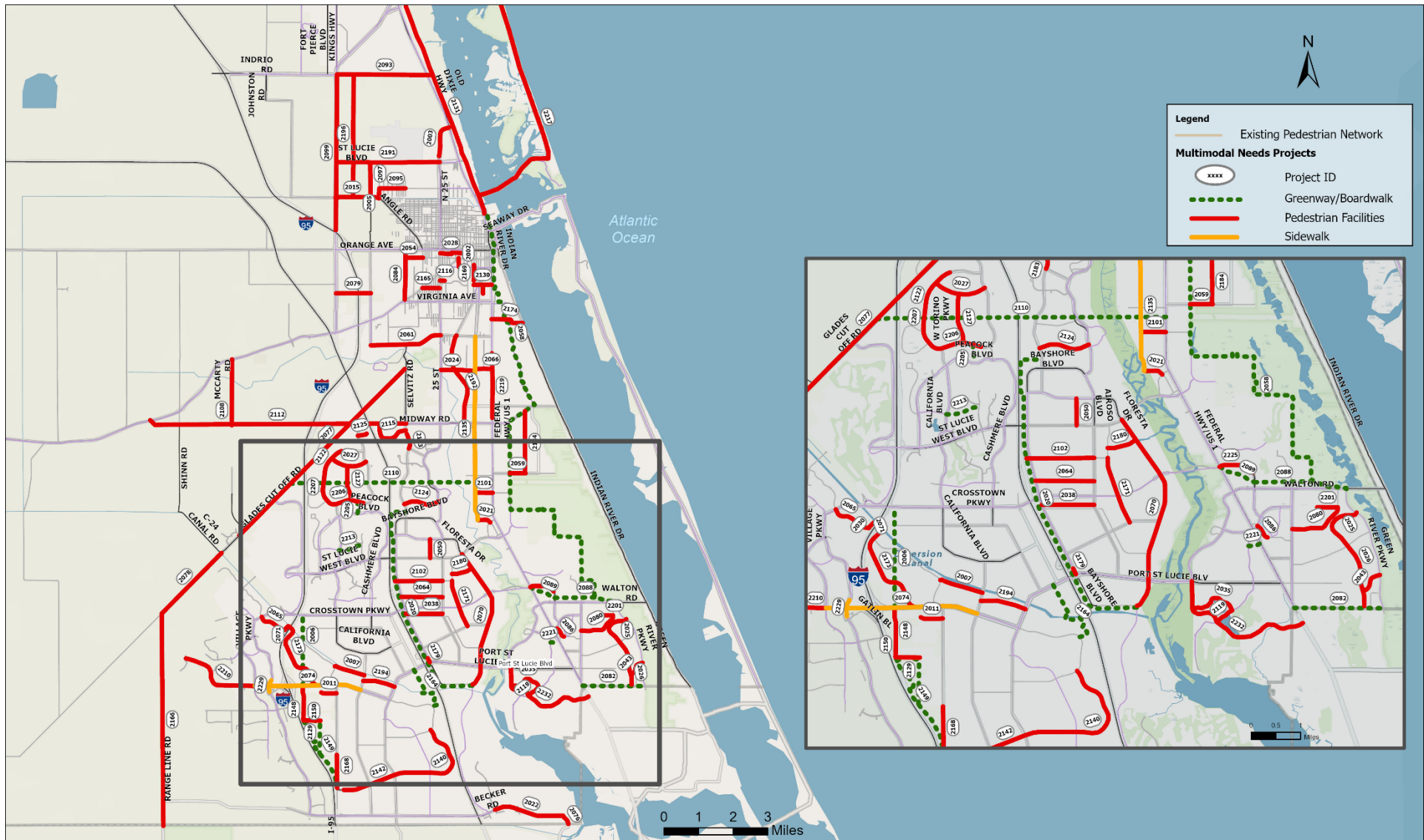
Project ID	Roadway Name	From	To	Project Type
2002	17th Street	Georgia Avenue	Delaware Avenue	Pedestrian Facilities
2003	25th Street	Industrial Avenue	US-1	Pedestrian Facilities
2005	53rd Street	Angle Road	Juanita Avenue	Pedestrian Facilities
2006	95 (Peacock) Greenway	Crosstown Parkway	Gatlin Boulevard	Greenway
2007	Abingdon Avenue	Savona Boulevard	Import Drive	Pedestrian Facilities
2011	Aledo Lane/Hayworth Avenue	Rosser Boulevard	Jobs Express Terminal	Pedestrian Facilities
2015	Angle Road	Kings Highway	N 53rd Street	Pedestrian Facilities
2020	Bayshore Greenway	Oaklyn Street	Archer Avenue	Boardwalk
2021	Beach Avenue	Oleander Avenue	Riomar Drive	Pedestrian Facilities
2022	Becker Road	SE Courances Drive	Gilson Road	Pedestrian Facilities
2024	Bell Avenue	25th Street	Oleander Avenue	Pedestrian Facilities
2025	Berkshire Boulevard	Melaleuca Boulevard	Green River Parkway	Pedestrian Facilities
2026	Berkshire Boulevard	South Blackwell Drive	Melaleuca Boulevard	Pedestrian Facilities
2027	Blanton Boulevard	Torino Parkway	East Torino Parkway	Pedestrian Facilities
2028	Boston Avenue	S 25th Street	S 13th Street	Pedestrian Facilities
2030	Cadima Street	Fairgreen Road	Galiano Road	Pedestrian Facilities
2035	Cambridge Drive	Westmoreland Boulevard	Morningside Boulevard	Pedestrian Facilities
2038	Carter Avenue	Bayshore Boulevard	Airoso Boulevard	Pedestrian Facilities
2043	Charleston Drive	Berkshire Boulevard	Green River Parkway	Pedestrian Facilities
2044	Colonial Road	Southern Avenue	Ohio Avenue	Pedestrian Facilities
2050	Curtis Street	Prima Vista Boulevard	Floresta Drive	Pedestrian Facilities
2054	Delaware Avenue	Hartman Road	33rd Street	Pedestrian Facilities

Project ID	Roadway Name	From	To	Project Type
2058	East Coast Greenway / Sun Trail	City Limit	Walton Road	Greenway
2059	Easy Street	US-1	Silver Oak Drive	Pedestrian Facilities
2061	Edwards Road	Jenkins Road	S 25th Street	Pedestrian Facilities
2064	Eyerly Avenue	Bayshore Boulevard	Airoso Boulevard	Pedestrian Facilities
2065	Fairgreen Road	Cadima Street	Crosstown Parkway	Pedestrian Facilities
2066	Farmers Market Road	Oleander Avenue	US-1	Pedestrian Facilities
2070	Floresta Drive	Southbend Boulevard	Prima Vista Boulevard	Pedestrian Facilities
2071	Galiano Road	Cadima Street	Import Drive	Pedestrian Facilities
2074	Gatlin Boulevard/Tradition Parkway	Community Boulevard	Savona Boulevard	Sidewalk
2076	Gilson Road	Martin/St. Lucie County Line	Becker Road	Pedestrian Facilities
2077	Glades Cut-Off Road	Burnside Drive	Selvitz Road	Pedestrian Facilities
2078	Glades Cut-Off Road	Range Line Road	C-24 Canal Road	Pedestrian Facilities
2079	Graham Road	Kings Highway	Jenkins Road	Pedestrian Facilities
2080	Grand Drive	Lennard Road	Tiffany Avenue	Pedestrian Facilities
2082	Green River Connector	US-1	Green River Parkway	Greenway
2084	Hartman Road	Okeechobee Road	Orange Avenue	Pedestrian Facilities
2086	Hillmoor Drive	Hillmoor Professional Plaza	Lyngate Drive	Pedestrian Facilities
2088	Hog Slough → East Coast Greenway Trail	Hog Slough Trail	East Coast Greenway	Greenway
2089	Hog Slough Trail	US-1	Village Green Drive	Greenway
2093	Indrio Road	Kings Highway	Old Dixie Highway	Pedestrian Facilities
2095	Juanita Avenue	N 53rd Street	N 41st Street	Pedestrian Facilities
2097	Keen Road	Angle Road	St. Lucie Boulevard	Pedestrian Facilities

Project ID	Roadway Name	From	To	Project Type
2099	Kings Highway	north of I-95	Indrio Road	Pedestrian Facilities
2101	Kitterman Road	Oleander Avenue	US-1	Pedestrian Facilities
2102	Lakehurst Drive	Bayshore Boulevard	Airoso Boulevard	Pedestrian Facilities
2108	McCarthy Road	Midway Road	Okeechobee Road	Pedestrian Facilities
2110	Midway Bypass Greenway	Glades Cut-Off Road	US-1	Greenway
2112	Midway Road	Okeechobee Road	Selvitz Road	Pedestrian Facilities
2115	Milner Drive	Jenkins Road	Selvitz Road	Pedestrian Facilities
2116	Mississippi Avenue	S 11th Street	S 10th Street	Pedestrian Facilities
2119	Morningside Boulevard	Westmoreland Boulevard	Cambridge Drive	Pedestrian Facilities
2122	N Torino Parkway	NW Coventry Circle	NW East Torino Parkway	Pedestrian Facilities
2124	NW North Macedo Boulevard	Selvitz Road	St James Drive	Pedestrian Facilities
2125	NW S Delwood Drive	NW East Torino Parkway	NW Jannebo Street	Pedestrian Facilities
2127	NW Volucia Drive	Torino Parkway	Blanton Boulevard	Pedestrian Facilities
2129	O. L. Peacock Park Trail Loop	Peacock Greenway	Peacock Greenway	Greenway
2130	Ohio Avenue	S 11th Street	US-1	Pedestrian Facilities
2131	Old Dixie Highway	US-1 Junction	Kings Highway	Pedestrian Facilities
2135	Oleander Avenue	SR 70	Beach Avenue	Sidewalk
2138	Paar Drive	Daemon Street	Savona Boulevard	Pedestrian Facilities
2140	Paar Drive	Port St. Lucie Boulevard	Tulip Boulevard	Pedestrian Facilities
2142	Paar Drive	Savona Boulevard	Port St. Lucie Boulevard	Pedestrian Facilities
2148	Peacock Greenway	Gatlin Boulevard	O. L. Peacock Park Trail Loop	Greenway
2149	Peacock Greenway South	O. L. Peacock Park Trail Loop	Paar Drive	Greenway
2150	Peacock Trail	Peacock Park	Gatlin Boulevard	Pedestrian Facilities

Project ID	Roadway Name	From	To	Project Type
2164	PSL → Tulip Greenway	Port St Lucie Boulevard	Tulip Boulevard	Greenway
2165	Quincy Avenue	Okeechobee Road	S 25th Street	Pedestrian Facilities
2166	Range Line Road	Martin/St. Lucie County Line	Glades Cut-Off Road	Pedestrian Facilities
2168	Rosser Boulevard	Open View Drive	Daemon Street	Pedestrian Facilities
2169	S 11th Street	Mississippi Avenue	Georgia Avenue	Pedestrian Facilities
2171	Sandia Drive	Thornhill Drive	Lakehurst Drive	Pedestrian Facilities
2173	Savage Boulevard	Gatlin Boulevard	Import Drive	Pedestrian Facilities
2174	Savannah Road	US-1	Indian River Drive	Pedestrian Facilities
2179	SE Bayshore Boulevard	Walgreen Driveway Entrance	SW Port St Lucie Boulevard	Pedestrian Facilities
2180	SE Calmoso Drive	SE Sandia Drive	Floresta Drive	Pedestrian Facilities
2183	Selvitz Road	Peachtree Boulevard	north of NW Nassau Lane	Pedestrian Facilities
2184	Silver Oak Drive	Easy Street	Midway Road	Pedestrian Facilities
2191	St. Lucie Boulevard	Kings Highway	N 25th Street	Pedestrian Facilities
2192	Sunrise Boulevard	Midway Road	Edwards Road	Pedestrian Facilities
2194	SW Dalton Avenue	Savona Boulevard	Port St. Lucie Boulevard	Pedestrian Facilities
2196	Taylor Dairy Road	Angle Road	Indrio Road	Pedestrian Facilities
2201	Tiffany Avenue	east of Simmons Street	Grand Drive	Pedestrian Facilities
2205	Torino Greenway	NE Torino Parkway	NW Peacock Boulevard	Greenway
2206	Torino Parkway	NW Topaz Way	NW Conus Street	Pedestrian Facilities
2207	Torino Parkway	south of NW Topaz Way	Blanton Boulevard	Pedestrian Facilities
2210	Tradition Parkway	Community Boulevard	Creswell Street	Pedestrian Facilities
2213	University Boulevard	NW California Boulevard	NW Bethany Drive	Greenway

Project ID	Roadway Name	From	To	Project Type
2217	US-1	North Causeway Bridge	St. Lucie County/Indian River County Line	Pedestrian Facilities
2219	US-1	Traub Avenue	High Point Boulevard	Pedestrian Facilities
2221	US-1 Connector	Morningside Boulevard	US-1	Greenway
2225	Village Green Drive	US-1	Cam De Entrada	Pedestrian Facilities
2229	Village Parkway	SW Meeting Street	SW Don Led Duke Drive	Sidewalk
2232	Weatherbee Road	Sunrise Boulevard	west of US-1	Pedestrian Facilities



2050 LRTP Needs Plan for St. Lucie TPO
Multimodal Projects - Pedestrian

Figure 5: Pedestrian Facilities Needs Plan

1.5.2 Bicycle and Micromobility Facilities Needs Plan

The Bicycle and Micromobility Facilities Needs Plan is based on the TPO's St. Lucie Walk-Bike Network and incorporates locations from current inventories, including the St. Lucie TPO Bicycle Facilities Map. These maps provide a reference for the existing non-motorized network, used by pedestrians and bicyclists. The plan identifies areas of need and aims to address gaps in the network to support safe and connected routes.

The St. Lucie Walk-Bike Network outlines projects to establish a system serving pedestrians, bicyclists, and greenway users. It builds on prior planning activities and maintains coordination efforts to develop a network of facilities guided by Complete Street standards, focusing on accessibility and safety for all users.

To support this objective, the following types of active transportation facilities may be considered where suitable:

- **Multi-Use Pathway:** A separate path (typically 8–12 feet wide) designed for shared use by bicyclists, pedestrians, and other non-motorized users with limited vehicle crossings.
- **Separated Bike/Micromobility Lanes:** Physically separated or protected lanes using delineators, raised curbs, bollards, planters, or parking lanes. Designed primarily for bicyclists, these lanes also accommodate micromobility users. One-way lanes generally have a minimum width of 7 feet; two-way lanes are usually at least 12 feet wide.
- **Buffered Bike Lanes:** On-road facilities (typically 6–7 feet wide) that include a painted buffer to increase separation between the bicycle/micromobility lane and adjacent motor vehicle travel lane.
- **Conventional Bike Lane:** An on-road facility (typically 4–5 feet wide) indicated by pavement markings and signs for preferential use by bicyclists and micromobility users.
- **Complete Street:** A project that redesigns the public right-of-way to accommodate all users, including pedestrians, bicyclists, transit riders, and motorists. Features may include wider sidewalks, dedicated transit lanes, separated bike lanes, and streetscape enhancements.
- **Multimodal Way:** A corridor improvement project intended to support multiple travel modes, often through the addition of multi-use paths or bike lanes, though less extensive than a full Complete Street project.
- **Microtransit & Micromobility Retrofit:** Modifications to existing roadways to better facilitate micromobility, such as adding bike lanes, improving pavement, enhancing crossings, and providing designated parking for shared devices.

- **Bike/Ped Safety Project** – A project that implements targeted safety countermeasures at a specific location, such as high-visibility crosswalks, pedestrian-activated signals, or improved lighting.

The detailed project list is provided in Table 6 and geographic spread is shown in Figure 6.

Table 6: Bicycle and Micromobility Facilities Needs Plan

Project ID	Roadway Name	From	To	Project Type
2001	13th Street	Georgia Avenue	Orange Avenue	Bicycle Facilities
2004	25th Street	Orange Avenue	Avenue F	Bicycle Facilities
2008	Airosa Boulevard	Port St Lucie Boulevard	St James Boulevard	Microtransit & Micromobility Retrofit
2009	Airosa Boulevard	Port St. Lucie Boulevard	St. James Drive	Bicycle Facilities
2010	Alcantarra Boulevard	Port St Lucie Boulevard	Savona Boulevard	Microtransit & Micromobility Retrofit
2013	Allen Street	Port St Lucie Boulevard	Essex Drive	Multi-Use Path
2014	Aneci Street	SE Thanksgiving Avenue	SE Thanksgiving Avenue	Multi-Use Path
2017	Archer Avenue	Selvitz Road	Bayshore Greenway	Multi-Use Path
2018	Avenue D	US-1	N 13th Street	Buffered bike lanes
2023	Becker Road	Via Tesoro	Gilson Road	Sidewalk & Multimodal Way
2031	California Boulevard	St Lucie West Boulevard	Torino Parkway	Multi-use path
2032	California Boulevard	NW County Club Drive	University Boulevard	Multimodal Way
2033	California Boulevard	St. Lucie West Boulevard	NW County Club Drive	Multimodal Way
2036	Cameo Boulevard	Port St Lucie Boulevard	Crosstown Parkway	Multi-Use Path
2037	Cane Slough Road	US-1	Lennard Road	Multi-Use Path
2039	Cascade Road	SW Hambrick St	SW Alvaton Avenue	Multi-Use Path
2040	Cashmere Boulevard	St Lucie West Boulevard	Pleasant Grove Way	Multimodal Way
2041	Cashmere Boulevard	Pleasant Grove Way	Westgate K-8	Multimodal Way
2045	Commerce Center Drive	Crosstown Parkway	St Lucie West Boulevard	Multi-Use Path

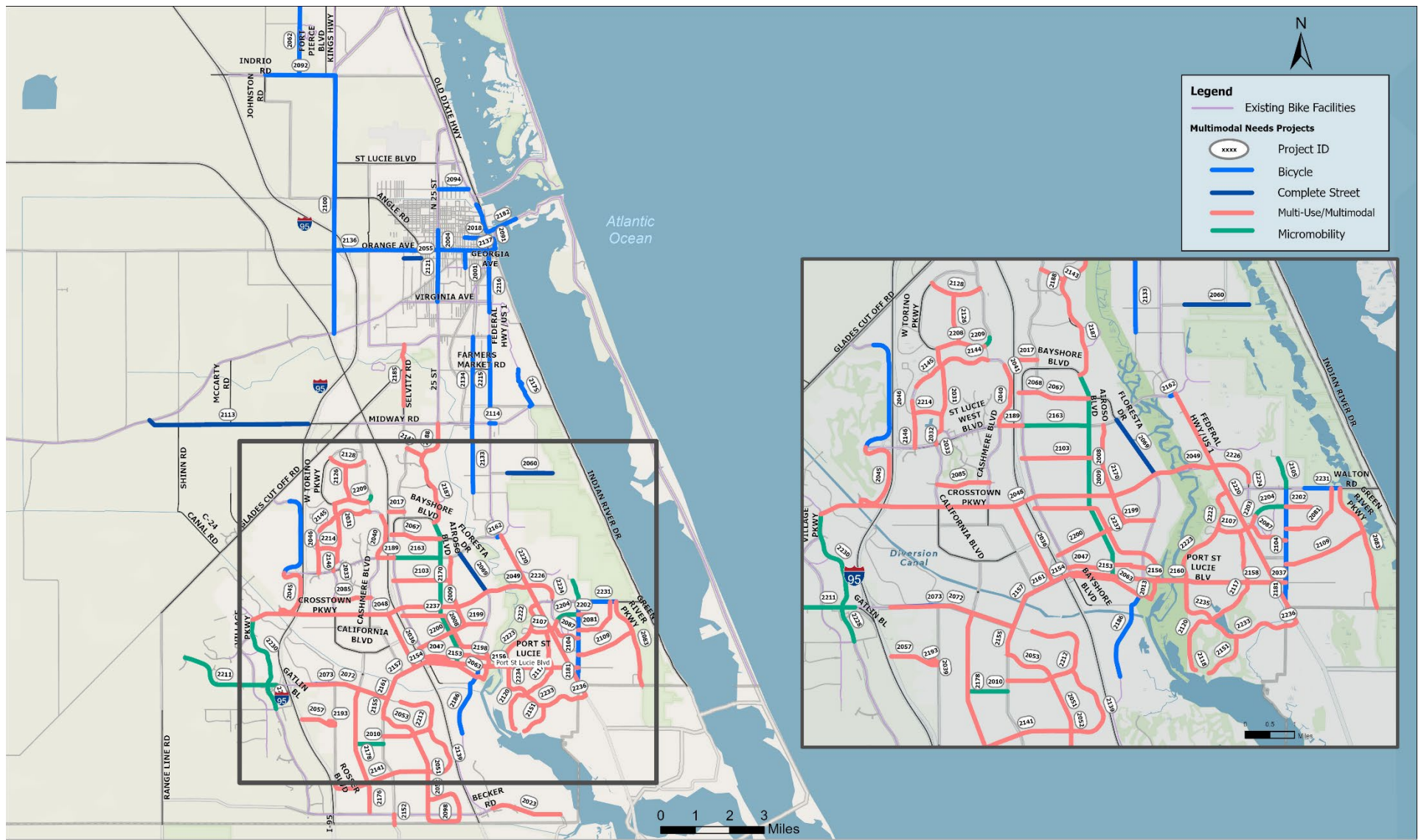
Project ID	Roadway Name	From	To	Project Type
2046	Commerce Centre Drive	St. Lucie West Boulevard	Commerce Lakes Drive	Bicycle Facilities
2047	Crescent Avenue	Kali St	Bayshore Boulevard	Multi-Use Path
2048	Crosstown Parkway	Village Parkway	US-1	Multimodal Way
2049	Crosstown Parkway Multimodal Bridge	Coral Reef Street	US-1	Multimodal Bridge
2051	Darwin Boulevard	Becker Road	SW Landale Boulevard	Bicycle Facilities
2052	Darwin Boulevard	Becker Road	Tulip Boulevard	Multimodal Way
2053	Darwin Boulevard	Tulip Boulevard	Port St Lucie Boulevard	Multimodal Way
2055	Delaware Avenue	Hartman Road	33rd Street	Complete Streets
2057	Dreyfuss Boulevard	O. L. Peacock Park Trail Loop	Rosser Boulevard	Multi-Use Path
2060	Easy Street	Yucca Drive	US-1	Complete Streets
2062	Emerson Avenue	Indrio Road	St. Lucie/Indian River County Line	Bicycle Facilities
2063	Essex Drive	Floresta Drive / Allen St	Bayshore Boulevard	Multi-Use Path
2067	Floresta Drive	Airoso Boulevard	Bayshore Boulevard	Multi-Use Path
2068	Floresta Drive	Bayshore Boulevard	Airoso Boulevard	Bicycle Facilities
2069	Floresta Drive	Prima Vista Boulevard	Crosstown Parkway	Complete Street
2072	Gatlin Boulevard	Brescia Street	Port St. Lucie Boulevard	Bike/Ped Safety
2073	Gatlin Boulevard	W of I-95	Port St Lucie Boulevard	Multimodal Way
2081	Grand Drive	SW Walton Road	SE Lennard Road	Multi-Use Path
2083	Green River Parkway	Martin County Line	Walton Road	Multi-Use Path
2085	Heatherwood Boulevard	SW California Boulevard	SW Cashmere Boulevard	Multimodal Way
2087	Hillmoor Drive	US-1	Lennard Road	Multi-Use Path
2091	Indian River Drive	Orange Avenue	AE Backus Museum & Gallery	Bicycle Facilities
2092	Indrio Road	Johnston Road	Kings Highway	Bicycle Facilities
2094	Juanita Avenue	25th Street	US-1	Bicycle Facilities

Project ID	Roadway Name	From	To	Project Type
2096	Kali Street	Thanksgiving Avenue	Crescent Avenue	Multi-Use Path
2098	Kestor Drive	Darwin Boulevard	Becker Road	Multi-Use Path
2100	Kings Highway	Okeechobee Road	Indrio Road	Bicycle Facilities
2103	Lakehurst Drive	SW Bayshore Boulevard	Sandia Avenue	Multi-Use Path
2104	Lennard Road	Shanas Trail	south of Kitterman Road	Bicycle Facilities
2105	Lennard Road	Walton Road	Veterans Memorial Parkway	Microtransit & Micromobility Retrofit
2106	Lyngate Drive	Morningside Boulevard	US-1	Multi-Use Path
2107	Lyngate Drive	Veterans Memorial Parkway	Morningside Boulevard	Multi-Use Path & Multimodal Lane
2109	Melaleuca Boulevard	Lennard Road	Green River Parkway	Multi-Use Path
2113	Midway Road	SR 70	I-95	Complete Street
2114	Midway Road	US-1	Star Avenue	Bicycle Facilities
2117	Morningside Boulevard	Lyngate Drive	Westmoreland Boulevard	Multimodal Lane
2118	Morningside Boulevard	Mitchell Avenue	Current Terminus of 2-Lane Divided Segment	Multimodal Way
2120	Morningside Boulevard	Westmoreland Boulevard	Mitchell Avenue	Multimodal Lane
2121	N 25th Street	Virginia Avenue	Avenue E	Bicycle Facilities
2126	NW Volucia Drive	East Torino Parkway	NW West Blanton Boulevard	Multi-Use Path
2128	NW West Blanton Boulevard	East Torino Parkway	West Torino Parkway	Multi-Use Path
2133	Oleander Avenue	Kitterman Road	south of Midway Road	Bicycle Facilities
2134	Oleander Avenue	Midway Road	Edwards Road	Bicycle Facilities
2136	Orange Avenue	Kings Highway	US-1	Bicycle Facilities
2137	Orange Avenue	US-1	Indian River Drive	Bicycle Facilities
2139	Paar Drive	Darwin Boulevard	Tulip Boulevard	Multimodal Way

Project ID	Roadway Name	From	To	Project Type
2141	Paar Drive	Rosser Boulevard	Darwin Boulevard	Multimodal Way
2143	Peachtree Boulevard	St James Drive	NW Selvitz Road	Multimodal Way
2144	Peacock Boulevard	California Boulevard	Cashmere Boulevard	Multimodal Way
2145	Peacock Boulevard	NW Mercantile Place	California Boulevard	Multimodal Way
2146	Peacock Boulevard	St Lucie West Boulevard	University Boulevard	Multimodal Way
2147	Peacock Boulevard	University Boulevard	Piazza Drive	Multimodal Way
2151	Pine Valley Street	Westmoreland Boulevard	Monte Vista Street	Multimodal Lane
2152	Port St Lucie Boulevard	Abraham Avenue	Becker Road	Multi-Use Path
2153	Port St Lucie Boulevard	Bayshore Boulevard	Floresta Drive	Multimodal Study
2154	Port St Lucie Boulevard	Cameo Boulevard	Bayshore Boulevard	Multimodal Study
2155	Port St Lucie Boulevard	Darwin Boulevard	Gatlin Boulevard	Multimodal Lane & Dedicated Bus/HOV Lane
2156	Port St Lucie Boulevard	Floresta Drive	Westmoreland Boulevard	Multimodal Study
2157	Port St Lucie Boulevard	Gatlin Boulevard	Cameo Boulevard	Multimodal Study
2158	Port St Lucie Boulevard	Westmoreland Boulevard	US-1	Multimodal Study
2159	Port St Lucie Boulevard (Multimodal Bridge)	Abode Avenue	Approx 400' S of C-23 Canal	Multimodal Bridge
2160	Port St Lucie Boulevard Multimodal Bridge	Existing River Boardwalk	Allen Street	Multimodal Bridge
2161	Port St. Lucie Boulevard	Gatlin Boulevard	US-1	Bicycle Facilities
2162	Prima Vista Boulevard	Banyan Drive	US-1	Bicycle Facilities
2163	Prima Vista Boulevard	Bayshore Boulevard	Airoso Boulevard	Microtransit & Micromobility Retrofit
2170	Sandia Drive	NW Prima Vista Boulevard	SE Thornhill Drive	Multi-Use Path
2175	Savannas Preserve State Park Trail	Weatherbee Road	south of Farmers Market Road	Bicycle Facilities
2176	Savona Boulevard	Becker Road	Paar Drive	Multimodal Way

Project ID	Roadway Name	From	To	Project Type
2178	Savona Boulevard	Paar Drive	Gatlin Boulevard	Multimodal Way
2181	SE Lennard Road	US-1	Cane Slough Road / Mariposa Avenue	Bicycle Facilities
2182	Seaway Drive	US-1	St. Lucie County Aquarium	Bicycle Facilities
2185	South of Devine Road	Edwards Road	Pedestrian Facilities	SmartMoves 2045 LRTP
2186	Southbend Boulevard / SE Floresta Drive	SE East Snow Road	Port St. Lucie Boulevard	Bicycle Facilities
2187	St James Drive / 25th Street	Airoso Boulevard	St James Boulevard	Multi-Use Path
2188	St James Drive / 25th Street	St James Boulevard	Midway Road	Multi-Use Path
2189	St Lucie West Boulevard	Cashmere Boulevard	Bayshore Boulevard	Multi-Use Path
2193	SW Alvaton Avenue	Rosser Boulevard	SW Dreyfuss Boulevard	Multi-Use Path
2195	SW Hambrick Street	SW Cascade Road	SW Dreyfuss Boulevard	Multi-Use Path
2197	Thanksgiving Avenue	Thanksgiving Avenue	Kail Street	Multi-Use Path
2198	Thanksgiving Avenue	Whitmore Drive	Aneci Street	Multi-Use Path
2199	Thornhill Drive	Airoso Boulevard	Floresta Drive	Multi-Use Path
2200	Thornhill Drive	Bayshore Boulevard	Airoso Boulevard	Multi-Use Path
2202	Tiffany Avenue	Lennard Drive	SE Grand Drive	Multi-Use Path
2203	Tiffany Avenue	US-1	Village Green Drive	Multi-Use Path
2204	Tiffany Avenue	Village Green Drive	Lennard Drive	Microtransit & Micromobility Retrofit
2208	Torino Parkway (East)	California Boulevard	Cashmere Boulevard	Multi-Use Path & Multimodal Way
2209	Torino Parkway (North & West)	East Torino Parkway	California Boulevard	Microtransit & Micromobility Retrofit
2211	Tradition Parkway	Stony Creek Way	W of I-95	Microtransit & Micromobility Retrofit
2212	Tulip Boulevard	Pierson Road	Port St Lucie Boulevard	Sidewalk & Multimodal Way
2214	University Boulevard	NW Peacock Boulevard	NW California Boulevard	Multimodal Way
2215	US-1	Baysinger Avenue	Edwards Avenue	Bicycle Facilities

Project ID	Roadway Name	From	To	Project Type
2216	US-1	Gardenia Avenue	Orange Avenue	Bicycle Facilities
2218	US-1	Seaway Drive	Old US Highway 1	Bicycle Facilities
2220	US-1	Westmoreland Boulevard	Prima Vista Boulevard	Multimodal Way
2222	Veterans Memorial Parkway	Lyngate Drive	US-1	Multimodal Way
2223	Veterans Memorial Parkway	Port St Lucie Boulevard	Lyngate Drive	Multimodal Way
2224	Village Green Drive	Industrial Boulevard	Walton Road	Multi-Use Path & Multimodal Way
2226	Village Green Drive	US-1	Industrial Avenue	Sidewalk & Multimodal Way
2228	Village Parkway	Discovery Way	Tradition Parkway	Microtransit & Micromobility Retrofit
2230	Village Parkway	Tradition Parkway	Crosstown Parkway	Microtransit & Micromobility Retrofit
2231	Walton Road	SE Scenic Park Drive	Green River Parkway	Bicycle Facilities
2233	Westmoreland Boulevard	Bakersfield Street	Morningside Boulevard	Multimodal Lane
2234	Westmoreland Boulevard	Cambridge Drive	Port St Lucie Boulevard	Multimodal Way
2235	Westmoreland Boulevard	Morningside Boulevard	Cambridge Drive	Multimodal Lane
2236	Westmoreland Boulevard	US-1	Bakersfield Street	Multi-Use Path
2237	Whitmore Drive	Bayshore Boulevard	Port St Lucie Boulevard	Multi-Use Path



2050 LRTP Needs Plan for St. Lucie TPO
Multimodal Projects - Bicycle and Micromobility

Figure 6: Bicycle and Micromobility Facilities Needs Plan

1.6 Transit Needs Plan

The Transit Needs Plan follows the 2024 St. Lucie County 10-Year Transit Development Plan (TDP) – Reimagine Transit, which sets a vision for an integrated transportation system to improve mobility and quality of life. The TDP outlines priorities such as expanding service in growth areas, increasing frequency and hours, and introducing flexible transit solutions. Projects are grouped into categories to build a more effective transit network.

- **New and Modified Fixed-Route Services:** New bus routes on corridors like Crosstown Parkway and Midway Road will connect previously unserved areas. Existing routes will gain weekend service and increased frequency to improve core transit options.
- **On-Demand Services:** On-demand micro-transit zones with smaller vehicles and app-based rides are proposed for areas unsuited to fixed-route buses, improving first- and last-mile connections.
- **Transit Circulators:** utilizing multimodal ways for golfcarts, e-bikes, scooters, etc.
- **Water Taxi Services:** Three water taxi routes will connect major recreational, residential, and commercial districts along the C-24 Canal and Riverwalk Boardwalk, offering a scenic, efficient transport option.
- **Bus Stop Facility Improvements:** The plan includes upgrades to bus stops to enhance safety, comfort, and accessibility for riders.

The project list is provided in Table 7 and the geographic locations are shown in Figure 7.

Table 7: Transit Projects Needs Plan

Project ID	Roadway Name	From	To	Project Type
3001	Crosstown Parkway	Walton Road	Gatlin Boulevard	New Transit Services
3002	Fort Pierce to South Hutchinson Island	South Hutchinson Island	Fort Pierce	New Transit Services
3003	Gatlin Boulevard (Route 5 split)	Innovation Way	Port St. Lucie Boulevard (Route 5 split)	New Transit Services
3004	Midway Road	Camp Ground Rd	East Torino Parkway	New Transit Services

Project ID	Roadway Name	From	To	Project Type
3005	Port St. Lucie Boulevard (Route 5 split)	Floresta Drive	Gatlin Boulevard	New Transit Services
3006	Route 1 - US-1	Seaway Drive	NW Baker Road	Modified Service on Existing Service (Sunday Service)
3007	Route 2 - North Fort Pierce Residential	Treasure Coast Intl Airport	North Causeway	Modified Service on Existing Service (Sunday Service)
3008	Route 3 - South Fort Pierce Business	Kings highway		Modified Service on Existing Service (Sunday Service, 30 Min Frequency)
3009	Route 4 - City of Port St Lucie trolley	Port St Lucie Blvd		Modified Service on Existing Service (Sunday Service)
3010	Route 8	Port St Lucie Blvd	Seaway Dr	Modified Service on Existing Service (Saturday Service)
3011	Selvitz Road/Bayshore Boulevard	Midway Rd	SW Port St Lucie Boulevard	New Transit Services
3012	Transit Circulator: California North	St Lucie West Boulevard	Peacock Boulevard	Transit Circulator
3013	Transit Circulator: California South	St Lucie West Centennial HS	California Boulevard	Transit Circulator
3014	Transit Circulator: Central School → Work	Paar Drive	St Lucie West Centennial HS	Transit Circulator
3015	Transit Circulator: Downtown → Port Dist.	Downtown District	Botanical Gardens	Transit Circulator
3016	Transit Circulator: Gatlin / Village Parkway	C-24 Canal	Becker Road	Transit Circulator

Project ID	Roadway Name	From	To	Project Type
3017	Transit Circulator: Greenway Connector	Marshall Parkway Extension	California Boulevard	Transit Circulator
3018	Transit Circulator: Selvitz → Crosstown	Crosstown Parkway	St James Boulevard	Transit Circulator
3019	Transit Circulator: South School → Work	Darwin Boulevard	Village Parkway	Transit Circulator
3020	Transit Circulator: St Lucie West	Lowe's Plaza on SLW Boulevard	NW Lake Whitney Place	Transit Circulator
3021	Transit Circulator: Torino → California	California Boulevard	Midway Road	Transit Circulator
3022	Transit Circulator: Traditions → Southbend	Snow Road	Gatlin Boulevard	Transit Circulator
3023	Transit Circulator: Tulip-Darwin Loop	Port St Lucie Boulevard	Gatlin Boulevard	Transit Circulator
3024	Virginia Avenue	US-1	Kings Highway	New Transit Services
3025	Water Taxi: C-24 Canal Route	C-24 Canal Park	Riverwalk Boardwalk	Water Taxi
3026	Water Taxi: North Route	Riverwalk Boardwalk	Crosstown Parkway	Water Taxi
3027	Water Taxi: South Route	Riverwalk Boardwalk	Club Med	Water Taxi
3011	Gatlin Boulevard/Tradition Parkway	N/A	N/A	Bus Stop facility

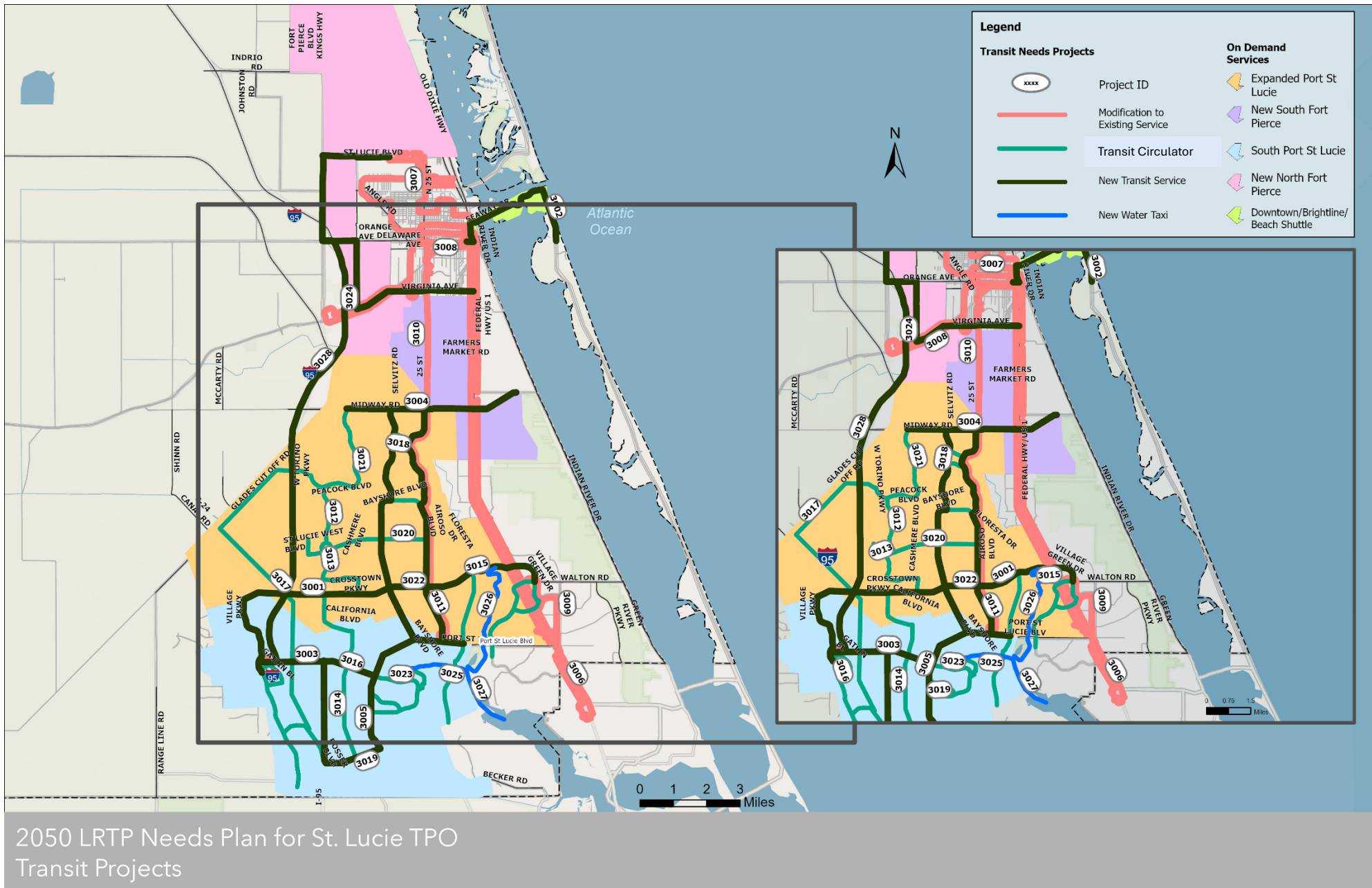


Figure 7: Transit Projects Needs Plan

1.7 Safety Needs Plan

Bicyclists, pedestrians, and motorists are classified as vulnerable road users under the SHSP due to their increased risk of fatalities. Implementing recommendations and strategies that address education, encouragement, engineering, enforcement, and evaluation at identified hot spots is expected to reduce future incidents involving these groups.

Florida supports the national traffic safety vision of "Vision Zero" and officially adopted its own initiative, "Driving Down Fatalities," in 2012. The mission of Reimagine Mobility 2050 is consistent with this vision, aiming to deliver a safe and efficient multimodal transportation network for the public.

The Safety project list is provided in Table 8 and the projects are illustrated in Figure 8.

Table 8: Safety Needs Plan

Project ID	Roadway	From_	To	Strategy
4001	25th Street	SR 70	Juanita Avenue	Speed management
4002	Airoso Blvd	Prima Vista Blvd	Lakehurst Dr	Speed management
4003	All of Torino Parkway			Multi-use path
4004	Angle Road	Kings Highway	Orange Avenue	Complete Streets
4005	Avenue D	US-1	N 13th Street	Buffered bike lanes
4006	Brescia Street	Savage Boulevard	Gatlin Boulevard	Sidewalk
4007	California Blvd	Indian River College	Peacock Boulevard	Multi-use path
4008	California Blvd	Somerset Prep School	Torino Parkway	Multi-use path
4009	Cashmere Blvd	Westgate K-8	Torino Parkway	Multi-use path
4010	Delaware Avenue	US-1	S 13th Street	Buffered bike lanes
4011	Delaware Avenue	Hartman Road	33rd Street	Complete Streets
4012	Easy Street	Yucca Drive	US-1	Complete Streets
4013	Floresta Drive	Crosstown Parkway	Prima Vista Boulevard	Complete Streets
4014	Gatlin Blvd	Port St. Lucie Boulevard	Brescia Street	Bike/Ped Safety
4015	Import Drive	Gatlin Boulevard	Savage Boulevard	Sidewalk
4016	Midway Road	I-95	SR 70	Complete Streets
4017	Midway Road	US-1	Indian River Drive	Complete Street, Speed Management

4018	N/S 13th Street	Zephyr Avenue	Avenue Q	Buffered bike lanes
4019	Oleander Ave	Beach Avenue	SR 70	Sidewalk
4020	Port St. Lucie Blvd	Cameo Boulevard	Gatlin Boulevard	Speed management
4021	Rosser Boulevard	Paar Drive	Nervia Ave & Lewis Library	Multi-use path
4022	Savage Boulevard	Gatlin Boulevard	Galiano Road	Sidewalk
4023	Savona Boulevard	Paar Drive	Gatlin Boulevard	Multi-use path
4024	St. James Drive	NE Lazy River Parkway	NE Royce Avenue	Sidewalk
4025	St. Lucie West Blvd	Peacock Boulevard	California Boulevard	Speed management
4026	Village Green Drive	US-1	Walton Road	Complete Streets

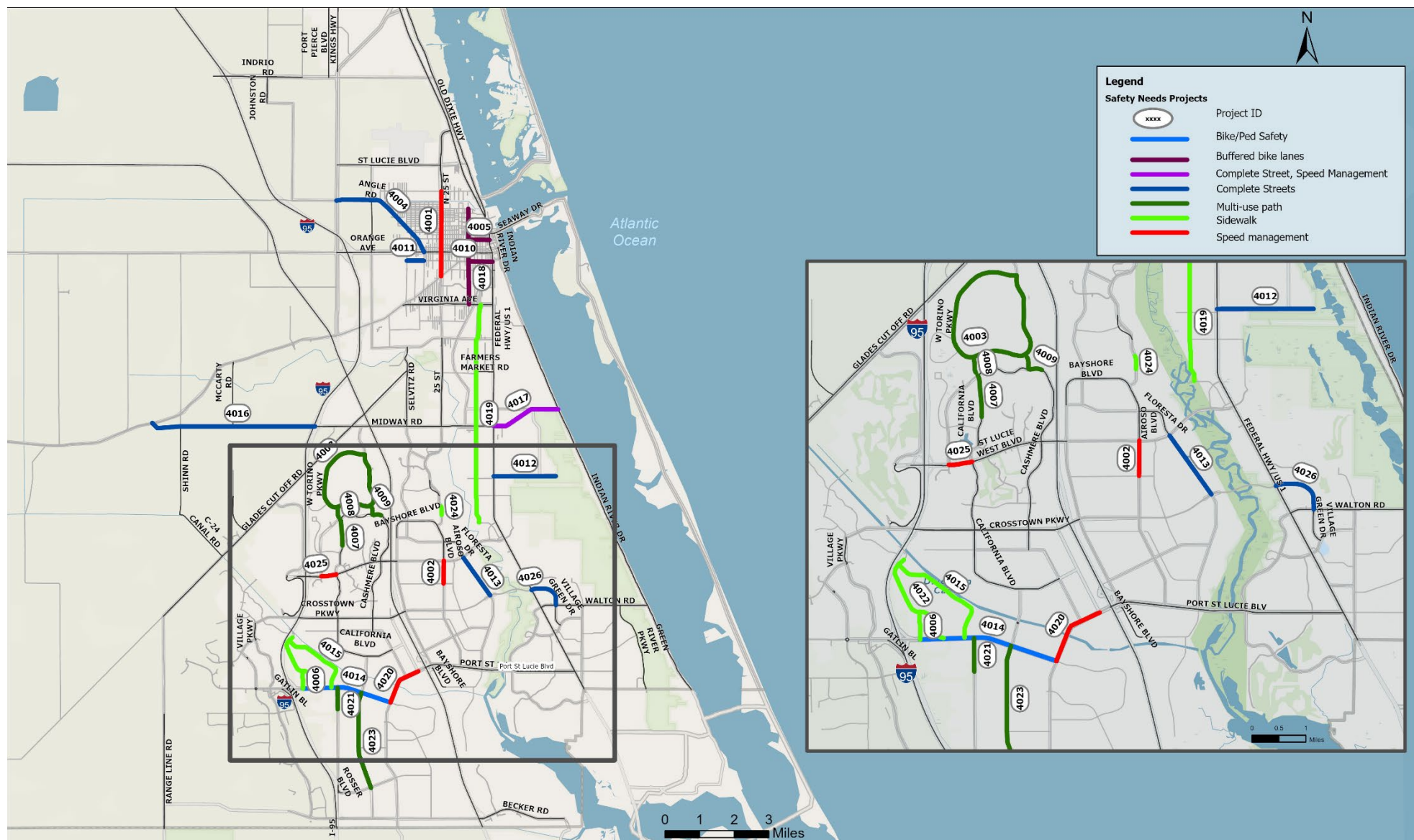


Figure 8: Safety Needs Plan



5200 NW 33rd Avenue, Suite 203
Fort Lauderdale, FL 33309
954.777.0044 • www.corradino.com



Coco Vista Centre
466 SW Port St. Lucie Blvd, Suite 111
Port St. Lucie, Florida 34953
772-462-1593 www.stlucietpo.org

AGENDA ITEM SUMMARY

Board/Committee:	Technical Advisory Committee (TAC)
Meeting Date:	July 22, 2025
Item Number:	6c
Item Title:	St. Lucie Advanced Transportation Management System (ATMS) Master Plan Update Scope of Services
Item Origination:	Unified Planning Work Program (UPWP)
UPWP Reference:	Task 3.4 - Congestion Management Process (CMP)
Requested Action:	Recommend approval of the draft Scope of Services, recommend approval with conditions, or do not recommend approval.
Staff Recommendation:	Based on the draft Scope of Services for the St. Lucie ATMS Master Plan Update being consistent with Task 3.4 of the UPWP, it is recommended that the draft Scope of Services be recommended for approval.

Attachments

- Staff Report
- St. Lucie ATMS Master Plan Update Draft Scope of Services



St. Lucie Transportation
Planning
Organization

Coco Vista Centre
466 SW Port St. Lucie Blvd, Suite 111
Port St. Lucie, Florida 34953
772-462-1593 www.stlucietpo.org

MEMORANDUM

TO: Technical Advisory Committee (TAC)

FROM: Peter Buchwald
Executive Director

DATE: July 15, 2025

SUBJECT: **St. Lucie Advanced Transportation Management System (ATMS) Master Plan Update Scope of Services**

BACKGROUND

At the meeting on April 15th, the TPO Board adopted amendments to the FY 2024/25 – FY 2025/26 Unified Planning Work Program (UPWP) that include an update to the St. Lucie ATMS Master Plan that was adopted by the Board in 2013. The ATMS Master Plan provides recommendations for improving the existing traffic control system in the TPO area to increase transportation system efficiency, enhance mobility, and improve safety through the installation of the latest technology and infrastructure. A draft Scope of Services (attached) for the St. Lucie ATMS Master Plan Update has been prepared for review and recommendation by the TPO Advisory Committees.

ANALYSIS

The St. Lucie ATMS Master Plan Update was added to Task 3.4, *Congestion Management Process*, of the UPWP. The draft Scope of Services for the Update was prepared by Kimley-Horn which is one of the TPO's General Planning Consultants.

The Updated ATMS Master Plan will serve as a roadmap for connecting all of the traffic signals across various signal maintaining agencies in the TPO area. Cloud-Based Arterial Management (CBAM), which utilizes the latest technology and infrastructure to connect the traffic signals, will be incorporated into the Master Plan as part of the Update. The local governments in the St. Lucie TPO area are starting to implement CBAM with support and

funding assistance from the Florida Department of Transportation (FDOT), and the TPO will continue the support through the Master Plan Update.

The Update will include an inventory of the existing traffic control systems, a review of the latest traffic control system technology and strategies that are available and an update of the system requirements for the technology and strategies, a Visioning/Partnership Workshop with FDOT and the local government staffs responsible for the existing traffic control systems, the identification of funding options, the preparation of a 10-Year Implementation Plan, and the development of measures to evaluate the performance of the implemented technology and strategies.

The St. Lucie ATMS Master Plan Update will be completed by June 2026 for a proposed cost of \$89,990. The completion date and proposed cost are consistent with Task 3.4 of the amended UPWP.

RECOMMENDATION

Based on the draft Scope of Services for the St. Lucie ATMS Master Plan Update being consistent with Task 3.4 of the UPWP, it is recommended that the draft Scope of Services be recommended for approval.

St. Lucie Transportation Planning Organization (TPO)
Advanced Transportation Management System (ATMS)
Master Plan Update

Project Understanding

The current version of ATMS Master Plan for St. Lucie County was published in February 2013. St. Lucie TPO (the “Client”) desires to develop an updated ATMS Master Plan (the “Project”). The updated ATMS Master Plan will provide recommendations for improving the existing traffic control system in the TPO area to increase transportation system efficiency, enhance mobility, and improve safety through the installation of the latest technology and infrastructure. The purpose of the updated ATMS Master Plan is to serve as a roadmap to the St. Lucie TPO’s vision of connecting all the traffic signals across various signal maintaining agencies in the TPO, and allowing for remote operations and monitoring of the signals and regional traffic management. The Cloud-Based Arterial Management (CBAM) program, led by Florida Department of Transportation (FDOT) District Four Transportation Systems Management and Operations (TSM&O) Office, will be incorporated into the ATMS Master Plan as part of the Project.

Scope of Services

The scope of services outlined below describes the services that will be performed by Kimley-Horn (the “Consultant”).

Task 1: Existing Traffic Control System Inventory

The Consultant will request existing ATMS inventory from the signal maintaining agencies. The Consultant will review the provided existing traffic signal systems, detections and traffic signal controller types maintained and operated by the following agencies:

- St. Lucie County
- City of Fort Pierce
- City of Port St. Lucie

The Consultant will review the provided locations of the existing fiber optic cable and conduits maintained by the following agencies:

- St. Lucie County
- City of Fort Pierce
- City of Port St. Lucie
- FDOT

- Florida's Turnpike Enterprise (FTE)

Based on information provided by the signal maintaining agencies, the Consultant will summarize the existing traffic signal systems and fiber optic inventory in a technical memorandum.

Deliverables: Existing traffic control system inventory technical memorandum (one draft and one final).

Task 2: Review of the Latest TSM&O Applications and Strategies

The Consultant will conduct research of the latest TSM&O applications and strategies for the following:

- Arterial management
- Freeway management
- Work zone management
- Emergency management
- Evacuation routes and signal timing
- Traffic incident management
- Traveler information system
- Freight and rail management
- Transit and multimodal
- Automated and connected vehicles

The Consultant will review applicable reference sources and use cases for the potential TSM&O applications and strategies consideration to support ATMS in the TPO area.

The Consultant will summarize the description of the TSM&O applications, strategies and use cases reviewed in a technical memorandum.

Deliverables: The latest TSM&O applications and strategies technical memorandum (one draft and one final).

Task 3: Visioning/Partnership Workshop

The Consultant will conduct one (1) in-person visioning/partnership workshop with the Project stakeholders. Workshop attendees will include the representatives of the following agencies:

- St. Lucie County
- St. Lucie TPO
- City of Fort Pierce

- City of Port St. Lucie
- FDOT District Four

Deliverables: Workshop agenda (one draft and one final) and meeting summary (one draft and one final).

Task 4: System Requirements Update

The Consultant will review the system requirements for the potential TSM&O applications and strategies identified in Task 2, and provide recommendations of system upgrades needed for the signal maintaining agencies and FDOT to support ATMS.

The Consultant will summarize the recommended system requirements in the deliverables under Task 5.

Task 5: Implementation Plan

The Consultant will develop an implementation plan for the recommended ATMS based on the previous tasks. The implementation plan will consider the impact and compatibility of the upcoming projects identified in the current FDOT Five-Year Work Program, FDOT District Four TSM&O Master Plan (update under development), St. Lucie TPO Long Range Transportation Plan (LRTP) and Transportation Improvement Program (TIP), staffing, operations and maintenance, and the compatibility with the regional ATMS including Martin County and Indian River County.

The Consultant will develop a high-level budgetary estimate for implementation, operation, and maintenance of the recommended ATMS. The consultant will summarize the recommended system requirements from Task 4, the implementation plan and high-level budgetary estimate in a technical memorandum.

Because the Consultant does not control the cost of labor, materials, equipment or services furnished by others, methods of determining prices, or competitive bidding or market conditions, any opinions rendered as to costs, including but not limited to opinions as to the costs of construction and materials, are made on the basis of its experience and represent its judgment as an experienced and qualified professional, familiar with the industry. The Consultant cannot and does not guarantee that proposals, bids or actual costs will not vary from its opinions of cost. If the Client wishes greater assurance as to the amount of any cost, it shall employ an independent cost estimator.

Deliverables: System requirements and implementation plan technical memorandum (one draft and one final).

Task 6: Funding Options

The Consultant will research and identify funding opportunities that can support the execution of the implementation plan recommended in Task 5. The funding programs by the following entities will be considered:

- US Department of Transportation;
- FDOT;
- St. Lucie County;
- City of Port St. Lucie;
- City of Fort Pierce; and
- Federal Highway Administration

The Consultant will summarize the funding opportunities in a technical memorandum.

Deliverables: Funding options technical memorandum (one draft and one final).

Task 7: Performance Measures

The Consultant will identify performance measures and develop quantifiable parameters to evaluate the recommended ATMS to be implemented in the future. The following categories of performance measures will be considered: transportation system efficiency, mobility, and safety.

The Consultant will summarize the performance measures in a technical memorandum.

Deliverables: Performance measures technical memorandum (one draft and one final).

Task 8: Documentation

The Consultant will prepare a draft report that documents all tasks of the Project and will develop a summary presentation and present to the TPO Committees and TPO Board. The Consultant will prepare the final report documentation after presenting to the TPO Committees and TPO Board. Fifteen (15) bound copies of the approved final report will be prepared, as well as one (1) digital PDF copy for inclusion on the TPO website, e-mail distribution, and future reproduction. A digital copy of the Project presentation will be prepared in PowerPoint format.

Deliverable: One (1) draft and one (1) final report documentation. One (1) draft and one (1) final presentation slide deck for use at the TPO meetings and future use by TPO staff. Fifteen (15) bound copies and one (1) digital PDF copy of the approved final report.

Task 9: Meetings

The Consultant will host one (1) virtual kick-off meeting with the TPO Project Manager and FDOT District Four Arterial Program Manager upon receiving the notice to proceed.

The Consultant will host up to ten (10) virtual progress meetings with the TPO Project Manager and the agency representatives identified in Task 3.

The Consultant will present the Task 8 presentation in one (1) round of TPO advisory committees and Governing Board meetings. The round of meetings will consist of up to four (4) in-person meetings to present the recommendations towards the end of the Project.

Deliverable: Meeting agendas.

Schedule

The Project will be completed by June 2026.

Fee

The following task items represent a breakdown of the lump sum amount that will be invoiced monthly on a percentage complete basis.

Task Name		Total
Task 1	Existing Traffic Control System Inventory	\$12,000.00
Task 2	Review of the Latest TSM&O Applications and Strategies	\$9,000.00
Task 3	Visioning/Partnership Workshop	\$7,000.00
Task 4	System Requirements Update	\$15,000.00
Task 5	Implementation Plan	\$18,000.00
Task 6	Funding Options	\$7,000.00
Task 7	Performance Measures	\$9,000.00
Task 8	Documentation	\$5,000.00
Task 9	Meetings	\$7,990.00
TOTAL FEE		\$89,990.00

	St. Lucie Transportation Planning Organization	Coco Vista Centre 466 SW Port St. Lucie Blvd, Suite 111 Port St. Lucie, Florida 34953 772-462-1593 www.stlucietpo.org
---	---	---

AGENDA ITEM SUMMARY

Board/Committee:	Technical Advisory Committee (TAC)
Meeting Date:	July 22, 2025
Item Number:	7a
Item Title:	Regional Bus Services Update
Item Origination:	Unified Planning Work Program (UPWP)
UPWP Reference:	Task 3.2: Transit Planning
Requested Action:	Discuss and provide comments
Staff Recommendation:	It is recommended that comments be provided regarding the Gatlin/Jobs Express Park and Ride.

Attachments

- Staff Report
- Gatlin/Jobs Express Park and Ride Map
- Port St. Lucie Express (PSLX) Route Map



Coco Vista Centre
466 SW Port St. Lucie Blvd, Suite 111
Port St. Lucie, Florida 34953
772-462-1593 www.stlucietpo.org

MEMORANDUM

TO: Technical Advisory Committee (TAC)

THROUGH: Peter Buchwald
Executive Director

FROM: Marceia Lathou
Transit Program Manager

DATE: July 11, 2025

SUBJECT: **Regional Bus Services Update**

BACKGROUND

The Gatlin/Jobs Express Park and Ride in Port St. Lucie, located near the Gatlin Boulevard/I-95 Interchange, serves as a regional mobility hub. Regional bus routes operating from the hub include the Port St. Lucie Express (PSLX), FlixBus, and Greyhound. St. Lucie County's Area Regional Transit (ART) provides local transit options. There are six bus bays each with their own bus shelter. The park-and-ride component of the Gatlin/Jobs Express mobility hub has a capacity of 162 vehicles. In addition, there are six electric vehicle charging stations. The Gatlin/Jobs Express Park and Ride was jointly developed by the Florida Department of Transportation (FDOT), the City of Port St. Lucie, and Florida Power and Light (FPL) with assistance from the St. Lucie TPO.

Port St. Lucie Express (PSLX)

The Port St. Lucie Express (PSLX) is a weekday bus service connecting the Gatlin/Jobs Express Park and Ride with downtown West Palm Beach. The service, primarily designed for commuters, has attracted a variety of riders who benefit from the service's convenience and affordability. PSLX buses are coach-style, equipped with amenities such as free Wi-Fi, device charging stations, air conditioning, extra comfort seats, wheelchair accessibility, and onboard restrooms. The fare is \$3, payable through contactless payment methods.

Launched in September 2024, the PSLX is operated by Palm Beach County's Palm Tran and funded by FDOT.

FlixBus/Greyhound

FlixBus is the parent company of Greyhound. Flix, a global travel technology company based in Germany, acquired Greyhound Lines, Inc. in 2021. Combined, FlixBus and Greyhound cover an extensive intercity bus network across North America. While both brands continue to operate under their own names, they share technology, operations, and booking infrastructure. Thus, customers can purchase tickets and access schedules for both Greyhound and FlixBus through either company's website or app. Greyhound and FlixBus operate to/from the Gatlin/Jobs Express Park and Ride during daytime and nighttime hours generally offering two trips south and two trips north daily.

Area Regional Transit (ART)

ART is the fare-free, public transit system administered by St. Lucie County's Transit Department. The system serves the cities of Fort Pierce, Port St. Lucie, unincorporated areas of St. Lucie County, and St. Lucie Village. ART provides several types of transportation services, two of which operate from the Gatlin/Jobs Express Park and Ride. These routes are scheduled to facilitate convenient connections with the PSLX.

- Fixed-route bus service
- ART On Demand, a curb-to-curb, shared ride service also known as microtransit

The Gatlin/Jobs Express Park and Ride also serves as a transfer point between two On Demand microtransit zones, further enhancing the location's popularity and accessibility.

Park and Ride

A park-and-ride lot is a designated parking area where individuals leave their personal vehicles and transfer to shared-use options such as public transit, carpools, or vanpools to complete their journeys. The Gatlin/Jobs Express facility supports this function by providing ample parking including accessible parking spaces, designated drop-off/pick-up areas, bicycle and pedestrian connections, high visibility, and enhanced lighting for improved safety and convenience.

Electric Vehicle (EV) Charging Stations

The EV charging stations at the Gatlin/Jobs Express Park and Ride were installed and are maintained by FPL through the company's EVolution program. The site features six fast charging stations which typically charge an

EV in about 30 minutes or less. The charging stations are available to the public 24 hours a day.

ANALYSIS

PSLX

The PSLX bus service continues to receive strong community support which has prompted plans for service expansion. A TPO Facebook post announcing the PSLX pre-launch generated hundreds of shares and positive comments. Below is a commendation received in May 2025 from a rider praising the bus service, an example that reflects the overall positive public sentiment toward the PSLX.

The Passenger states: "I want to extend my heartfelt thanks to everyone involved in Florida's transportation systems, especially those who helped make the new express bus service between Port St. Lucie and West Palm Beach a reality. This connection between two major cities is not just a transportation upgrade-it's a true service to our community. It's helping commuters, easing traffic congestion, saving energy, and protecting our environment. I've personally experienced the benefits of this service. Riding with my daughter, I've seen the genuine smiles on passengers' faces-grandmothers visiting loved ones, travelers heading to the airport, and daily commuters enjoying a safer, more relaxing journey home. This bus is not just a ride; it's a meaningful improvement to quality of life. We waited a long time in this region for a rail solution like Tri-Rail, and while we still hope for that one day, this express bus service is already changing lives in quiet, powerful ways. Thank you again to every individual who played a part in making this happen-your work matters, and the public is grateful."

South Florida Commuter Services, a program of FDOT, provides marketing and technical support for the PSLX, and has been instrumental in the steady growth of ridership. The following is a snapshot of PSLX ridership statistics as of June 30, 2025.

Total rides since inception: 9,317

Average rides per day since inception: 49

Average rides per day for the current 7 days: 57 (6/24/25 – 6/30/25)

Average rides per day for the current 4 weeks: 62 (6/3/25 – 6/30/25)

ART

The following are the current ridership statistics for ART's fixed-route and On Demand services that operate from the Gatlin/Jobs Express Park and Ride:

Gatlin/Jobs Express Park and Ride - 3 Months Ridership					
	Fixed Route/ Pick Up	Fixed Route/ Drop Off	ART On Demand/ Pick Up	ART On Demand/ Drop Off	Total
April	32	37	164	226	459
May	65	43	141	171	420
June*	72	61	53	63	249
	169	141	358	460	

*The June ridership data for ART On Demand Pick Up & Drop Off only reflects two weeks of data at this time. The provider hasn't updated their system.

FlixBus/Greyhound

FlixBus/Greyhound operates at the Gatlin/Jobs Express Park and Ride through an agreement with the City of Port St. Lucie. FlixBus, the parent company, recently initiated the renewal of this agreement, an indication of the company's continued interest in and appreciation for access to the facility. There are no publicly available specific ridership statistics for Greyhound or FlixBus services at this location.

Park and Ride

FDOT District 4 develops occupancy reports for local park-and-ride facilities. The data for these reports is collected through physical inspections conducted at least twice a year. The occupancy reports are a key part of ongoing program evaluation and help guide decisions about maintenance, promotion, and potential expansion or reduction of park and ride services. According to the 2024 FDOT District 4 report, the Gatlin/Jobs Express Park and Ride operates at more than 40 percent occupancy. Local observation indicates that a significant number of regional and local transit riders access the facility as pedestrians or are picked up/dropped off.

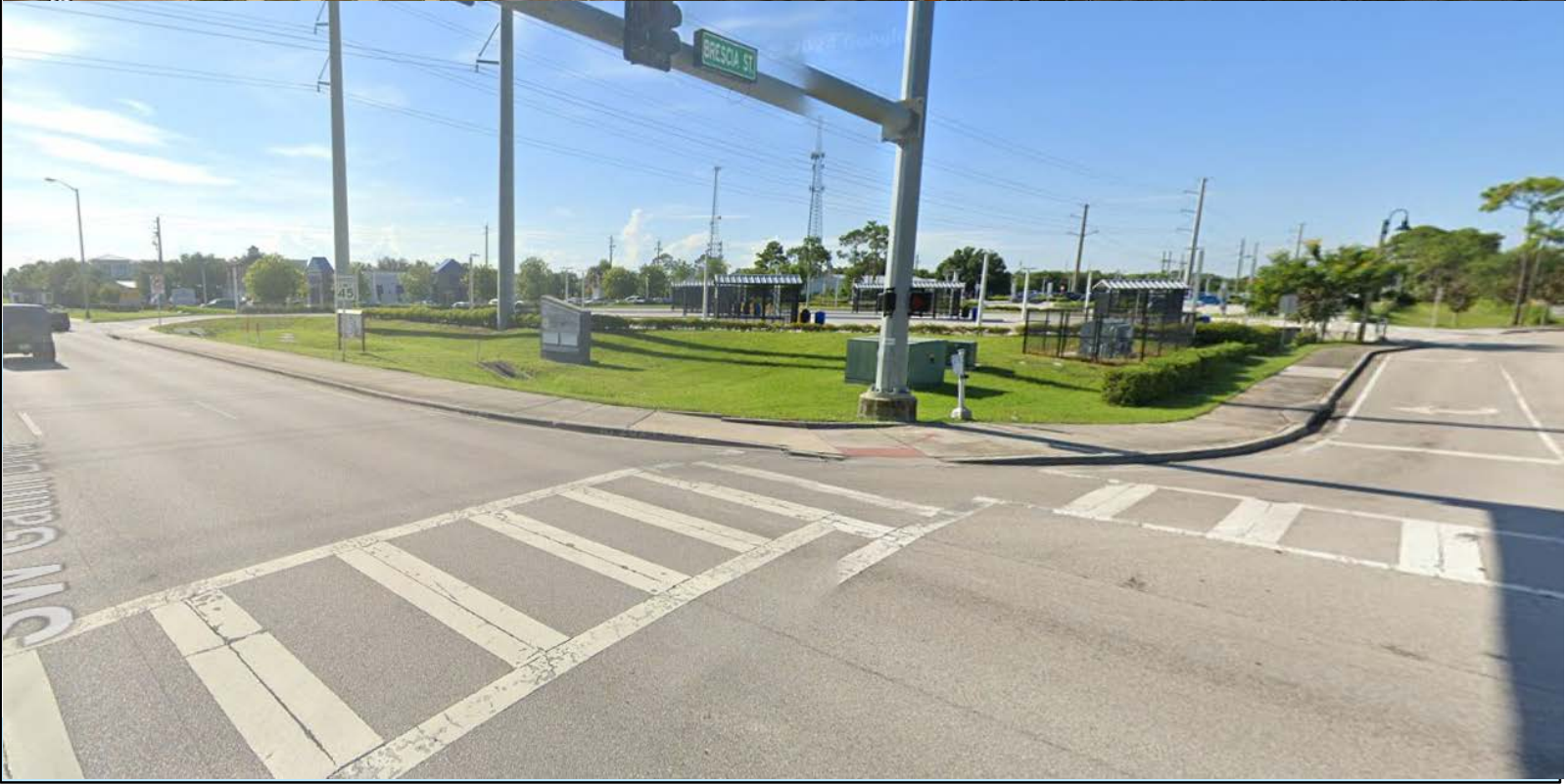
Electric Vehicle (EV) Charging Stations

Detailed user reviews of the FPL EVolution charging stations at the Gatlin/Jobs Express Park and Ride are available at platforms like PlugShare, Google Maps, and ChargeHub. Firsthand user experiences are overwhelmingly positive with users citing ease of use and proximity to eating establishments as standout features. As noted in one Google Review, "Great prices easy to use easy to understand. You do need an FPL evolution app to make it easy for you, but I will go there every day if I have to." No recurring issues have been reported at this location, a big plus since reliability is crucial for EV drivers.

RECOMMENDATION

It is recommended that comments be provided regarding the Gatlin/Jobs Express Park and Ride.

Gatlin/Jobs Express Park and Ride

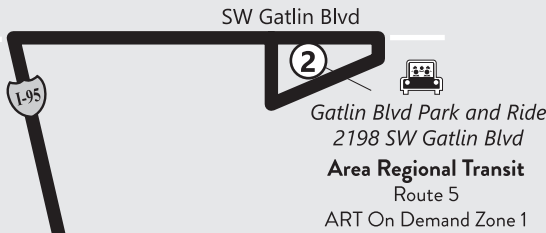




Port St. Lucie Express

Port St. Lucie to West Palm Beach via I-95

Port St. Lucie



See next page for complete information on Port St. Lucie Express

See page 51 for complete information on Port St. Lucie Express

See page 52 for complete information on Port St. Lucie Express

MAP IS NOT TO SCALE

1 2 20 40
41 43 44 60
West Palm Beach
Intermodal Transit Center
& WPB Tri-Rail

LEGEND

Points of Interest

Route

Specified Times

Timepoint

Connecting Route

Route 95X Bus Stops

Palm Tran Park and Ride

Tri-Rail Station

West Palm Beach



Northbound Norte / Nô Weekday / Semana / Lasémèn

p.m. times are shown in **bold**
Los horarios de p.m. se muestran en **negrilla**
Lê nan apremidi yo prezante an **fonse**

① West Palm Beach Intermodal Transit Center Bus Stop #602	② SW Gatlin Blvd Park and Ride Bus Stop #9501
5:15	6:10
5:40	6:35
5:15	6:25
5:50	6:55



Southbound Sur/Sid Weekday / Semana / Lasémèn

p.m. times are shown in **bold**
Los horarios de p.m. se muestran en **negrilla**
Lê nan apremidi yo prezante an **fonse**

② SW Gatlin Blvd Park and Ride Bus Stop #9501	① West Palm Beach Intermodal Transit Center Bus Stop #602
6:20	7:25
6:45	7:50
6:35	7:30
7:05	8:00