



# SMART MOVES 2045

St. Lucie TPO Long Range Transportation Plan

June 2020  
Board Meeting



# Agenda

- » Overview
- » Public Engagement
- » Study Area Review
- » Goals, Objectives, and Performance Measures
- » Land Use and Socioeconomic Data
- » 2045 Preliminary Roadway Deficiencies



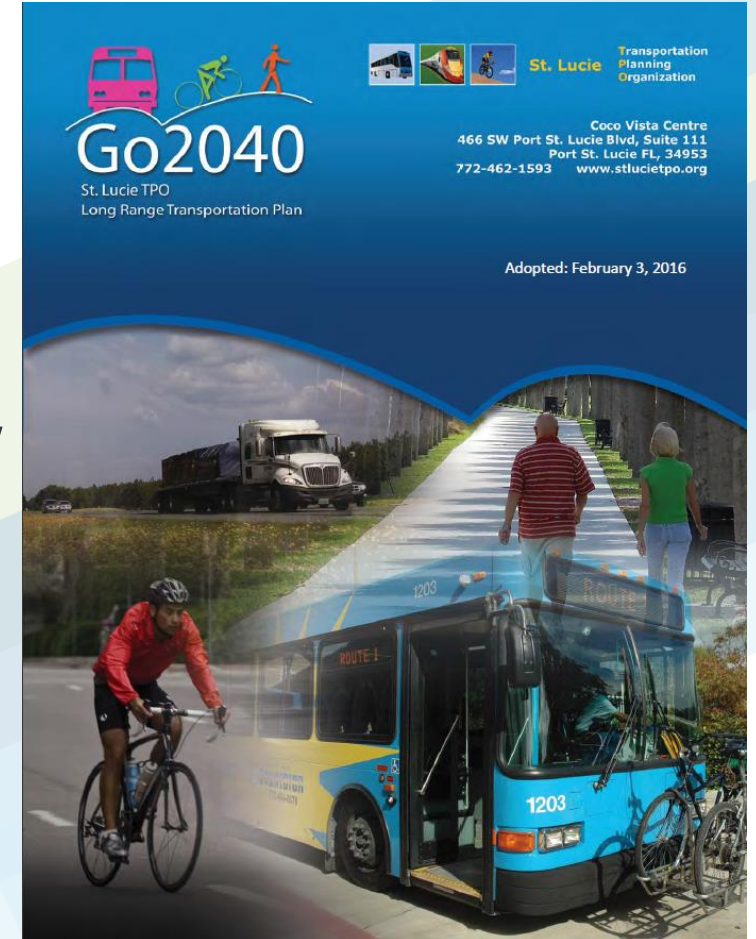


# Overview



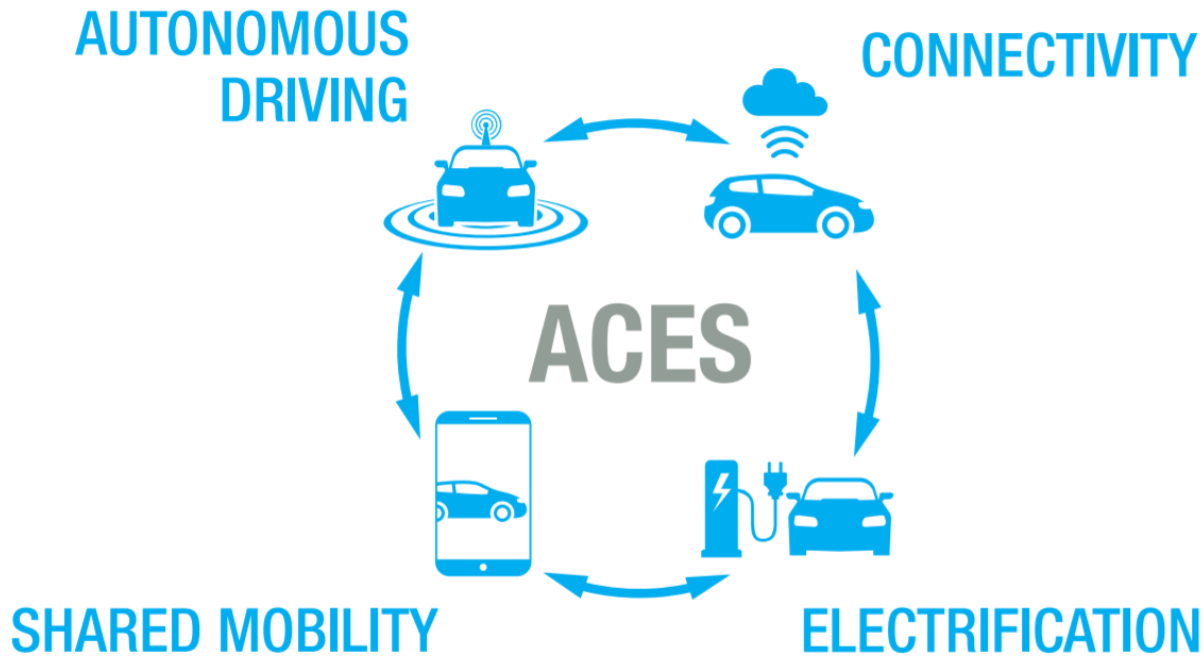
# Background

- » The Long Range Transportation Plan (LRTP) 2045 describes how St. Lucie County's multimodal transportation system will evolve over the next 25 years.
- » The St. Lucie Transportation Planning Organization (TPO) is required by federal law to review and update its transportation plan every five (5) years.
- » The St. Lucie 2040 LRTP, referred to as *Go2040*, was adopted by the TPO Governing Board in February 2016.





# Major Theme



- » Planning concepts of Autonomous, Connected, Electric, and Shared Vehicle (ACES).
- » Benefits of ACES are expected to align with traditional objectives of shared vehicle use, strong urban centers, efficient travel corridors, and inclusive access.





# Public Engagement





### Self-Identification

Anyone who has exhibited previous interest through public meeting attendance, written comments, or contact with the TPO.



### TPO Identification

Agencies, organizations, and the general public identified from the TPO's current mailing lists and from public records.



### Third-party Identification

General public and private groups as identified through known shareholders.

# Different methods to identify the public to be involved



# Public Participation Methods



## HIGH-TOUCH & VIRTUAL HIGH-TOUCH

- » Focus Groups
- » Workshops
- » Regional Coordination
- » Committee Meetings



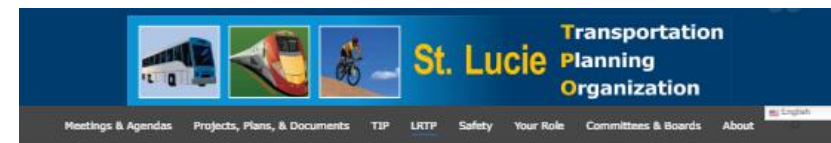
## HIGH-TECH

- » Community Survey
- » Website
- » Media



# Project Website

» <http://www.stlucietpo.org/lrtp/>



SMART  
MOVES 2045

WHAT'S  
NEW

The St. Lucie Transportation Planning Organization (TPO) is currently developing the 2045 Long Range Transportation Plan. Please take approximately 5 to 10 minutes to fill out the survey below, which will help the TPO to identify public priorities. Surveys are anonymous. We appreciate your input. [Click here to take the survey.](#)



#### What is an LRTP?

- The Long Range Transportation Plan (LRTP) 2045 describes how St. Lucie County's multimodal transportation system will evolve over the next 25 years.
- The St. Lucie Transportation Planning Organization (TPO) is required by federal law to review and update its transportation plan every five (5) years.
- The St. Lucie 2040 LRTP, referred to as Go2040, was adopted by the TPO Governing Board in February 2016.



#### Why is it important to do a long range plan?

- Creates a vision, develops goals and objectives, identifies needs and financial resources, and provides a cost feasible plan for transportation.
- Shapes the future of transportation investment in the County.
- Sets the vision for transportation for all modes of travel throughout the County.
- Influences projects included in the 5-year Transportation Improvement Program (TIP).



#### What types of projects are included in an LRTP?

- Non-motorized facility networks (bicycle facilities, sidewalks, and shared-use paths).
- Transit services and facilities.
- Major roadway improvements and new interchanges.
- Freight capacity projects (roadway, railways, seaport, and airport facilities).



#### What is the difference between a Needs Plan and Cost Feasible Plan?

- The Needs Plan provides a summary of potential transportation projects that addresses gaps in the system and community needs.
- The Cost Feasible Plan is a list of prioritized projects from the Needs Plan, which is impacted by anticipated funds throughout the 25-year planning range.



#### How can I provide input?

- Throughout the development of the 2045 LRTP there will be four pop-up outreach events, five focus groups, three workshops, and numerous TPO committee and Board meetings where the LRTP will be discussed.
- An online community survey will be posted on the website.



Go2040 Long Range Transportation Plan



Go2040 Long Range Regional Transportation Plan

SMART  
MOVES 2045



## St. Lucie TPO 2045 Long Range Transportation Plan Survey

The St. Lucie Transportation Planning Organization (TPO) is currently developing the 2045 Long Range Transportation Plan. Please take approximately 5 to 10 minutes to fill out the survey below, which will help the TPO to identify public priorities. Surveys are anonymous. We appreciate your input.

OK

\* 1. What is your home zip code?

**<http://www.stlucietpo.org/lrtp/>**



# Outreach

» Pop-up outreach events, focus groups, and workshops





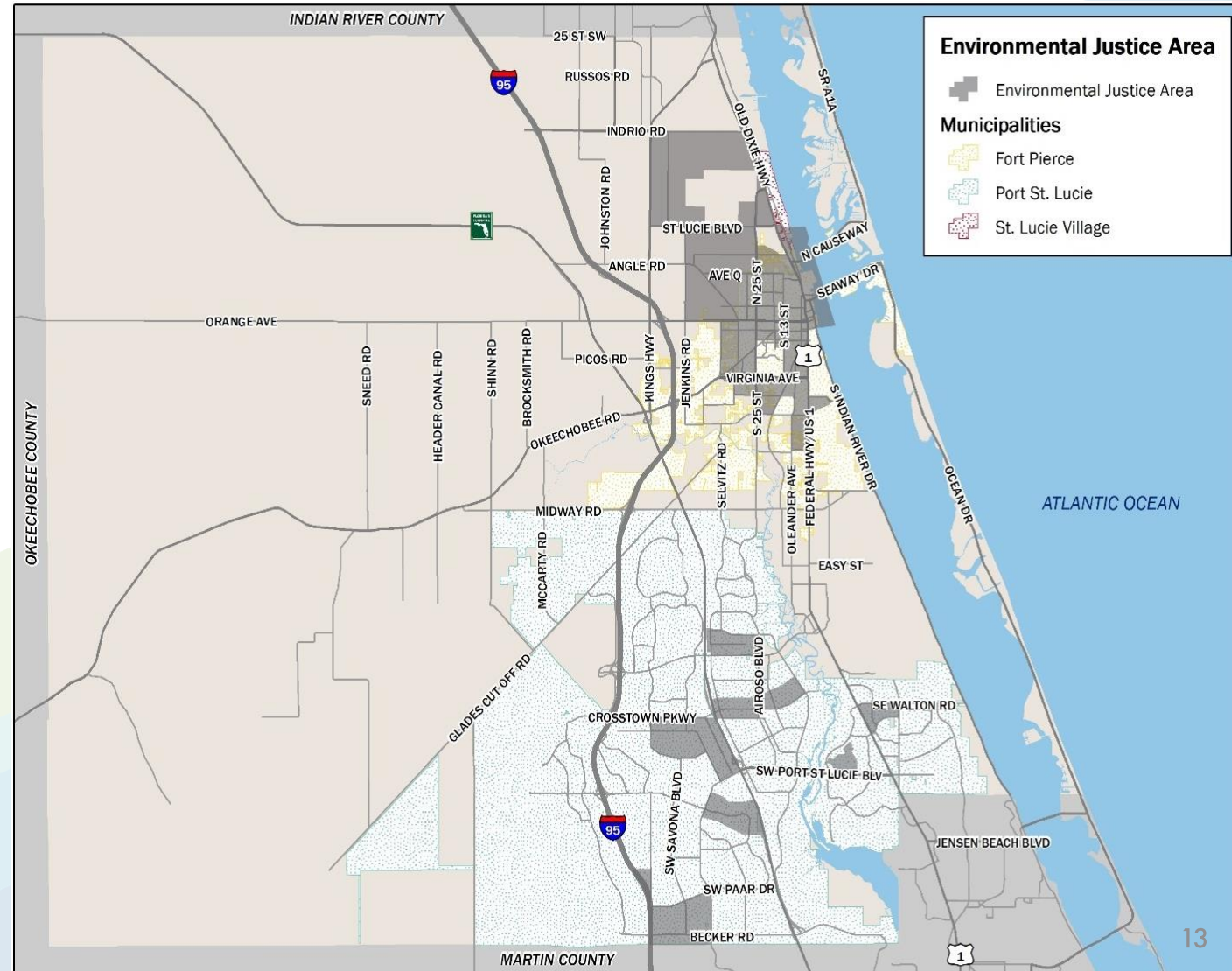


# **Study Area Review**



# Environmental Justice Area

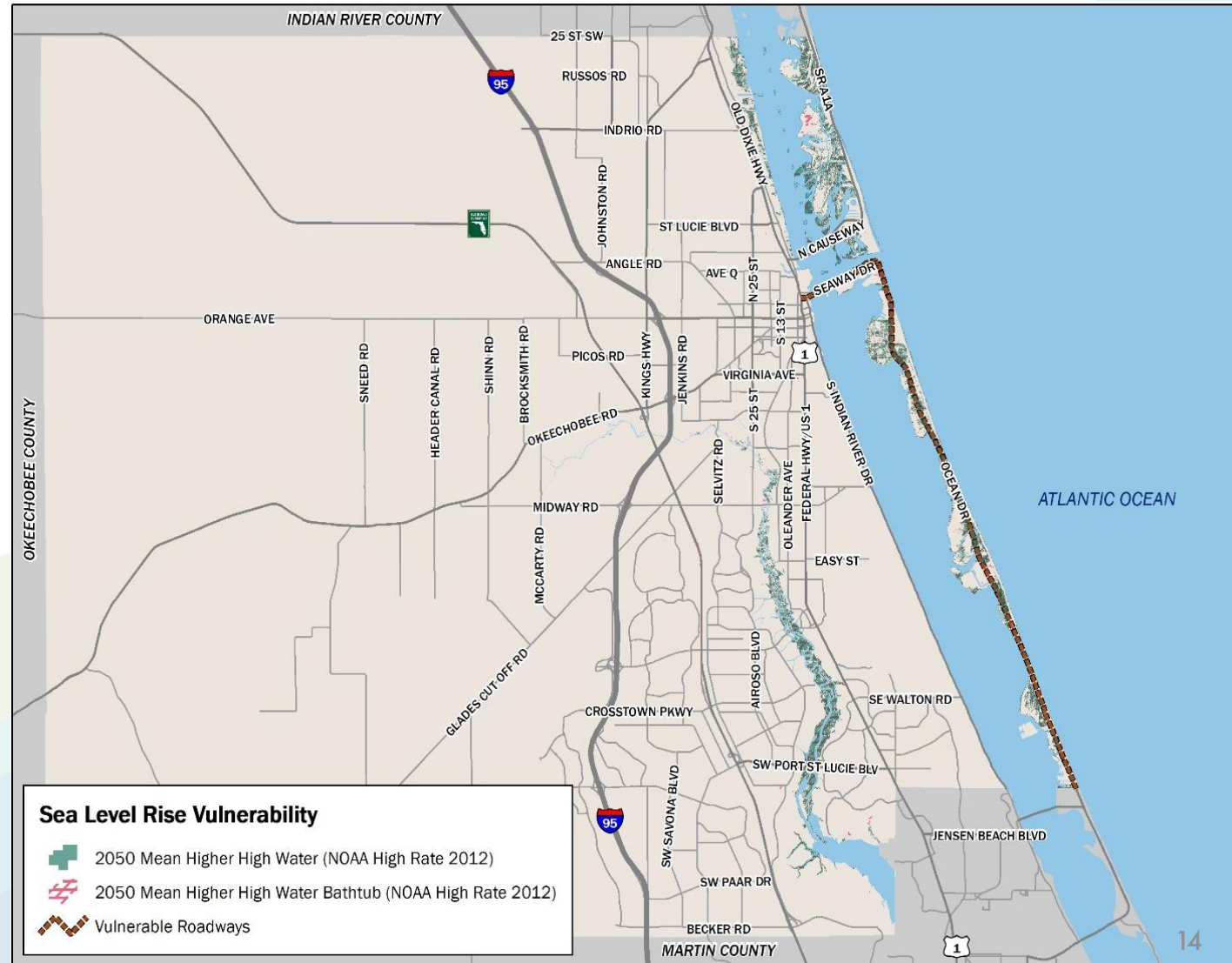
» Defined by the TPO as a census tract where 50 percent (50%) or more individuals live in poverty or 50 percent (50%) or more of the population is minority.





# Sea Level Rise Vulnerability

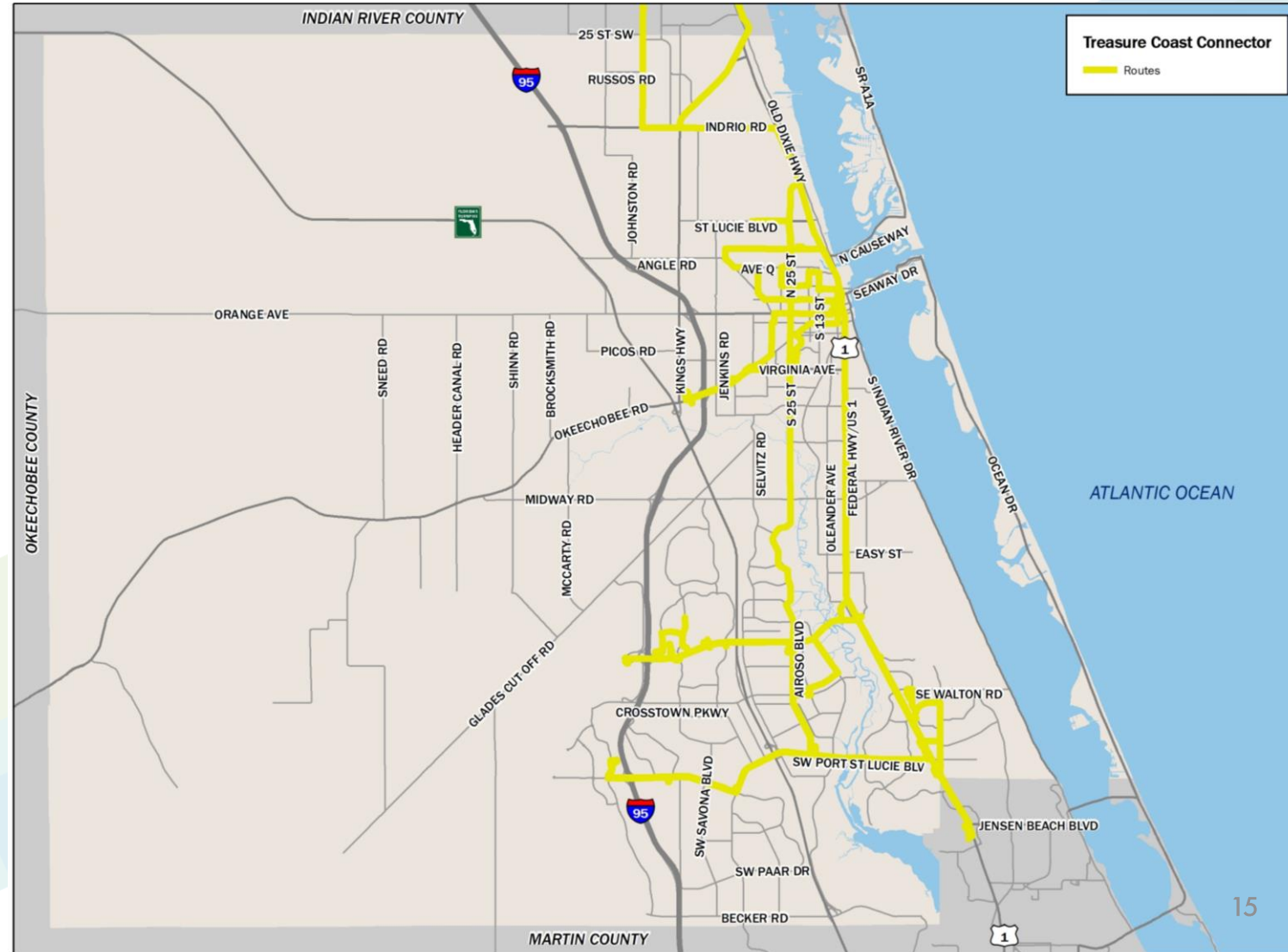
- » In the past 50 years, mean sea level has risen 5.5 inches in the Treasure Coast and Southeast Florida according to NOAA tide gauge data.
- » The most aggressive projection, the 2012 NOAA High Rate, in the year 2050, minor impacts to the County's roadways could be experienced.





# Treasure Coast Connector

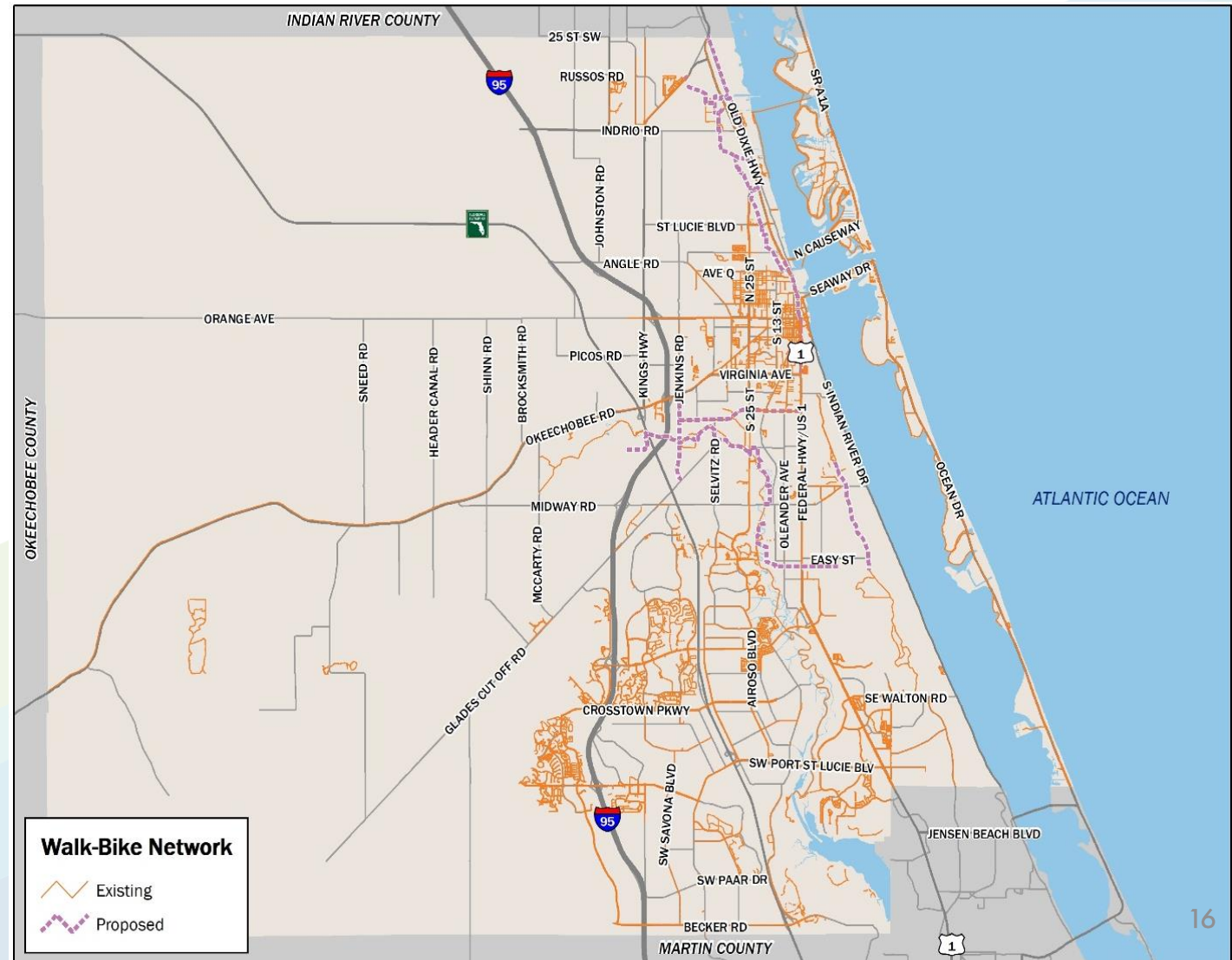
» Public transit provider for St. Lucie County through a contract with the Board of County Commissioners of St. Lucie County.





# Walk-Bike Network, 2018

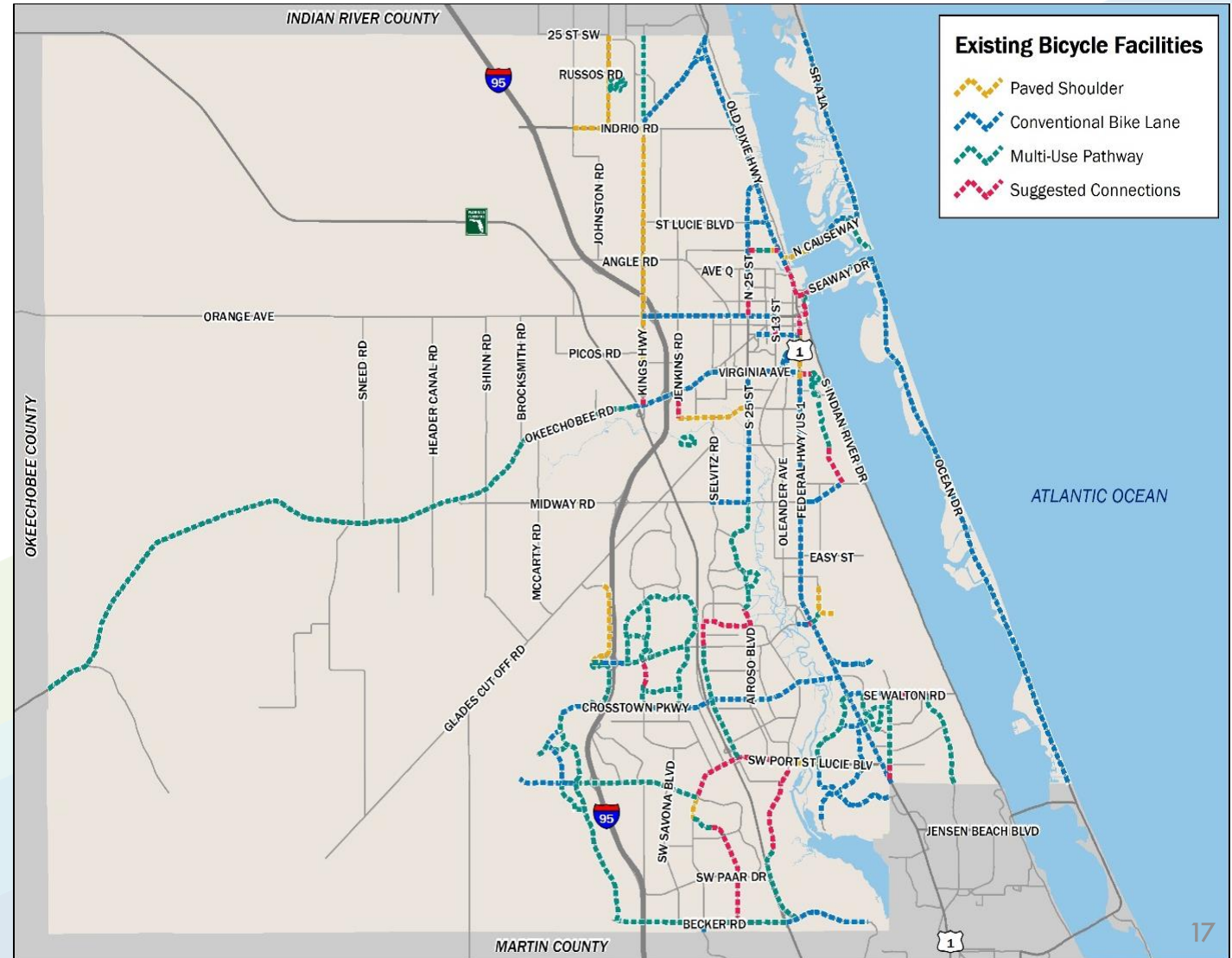
Facility Type	Miles
8'-12' Wide Sidewalks	178
4'-6' Wide Sidewalks	518
Marked Bike Lanes	111
4' Wide Paved Shoulders	29
Unpaved Hiking-Bike Trails	92
<b>Total</b>	<b>927</b>





# Existing Bicycle Facilities

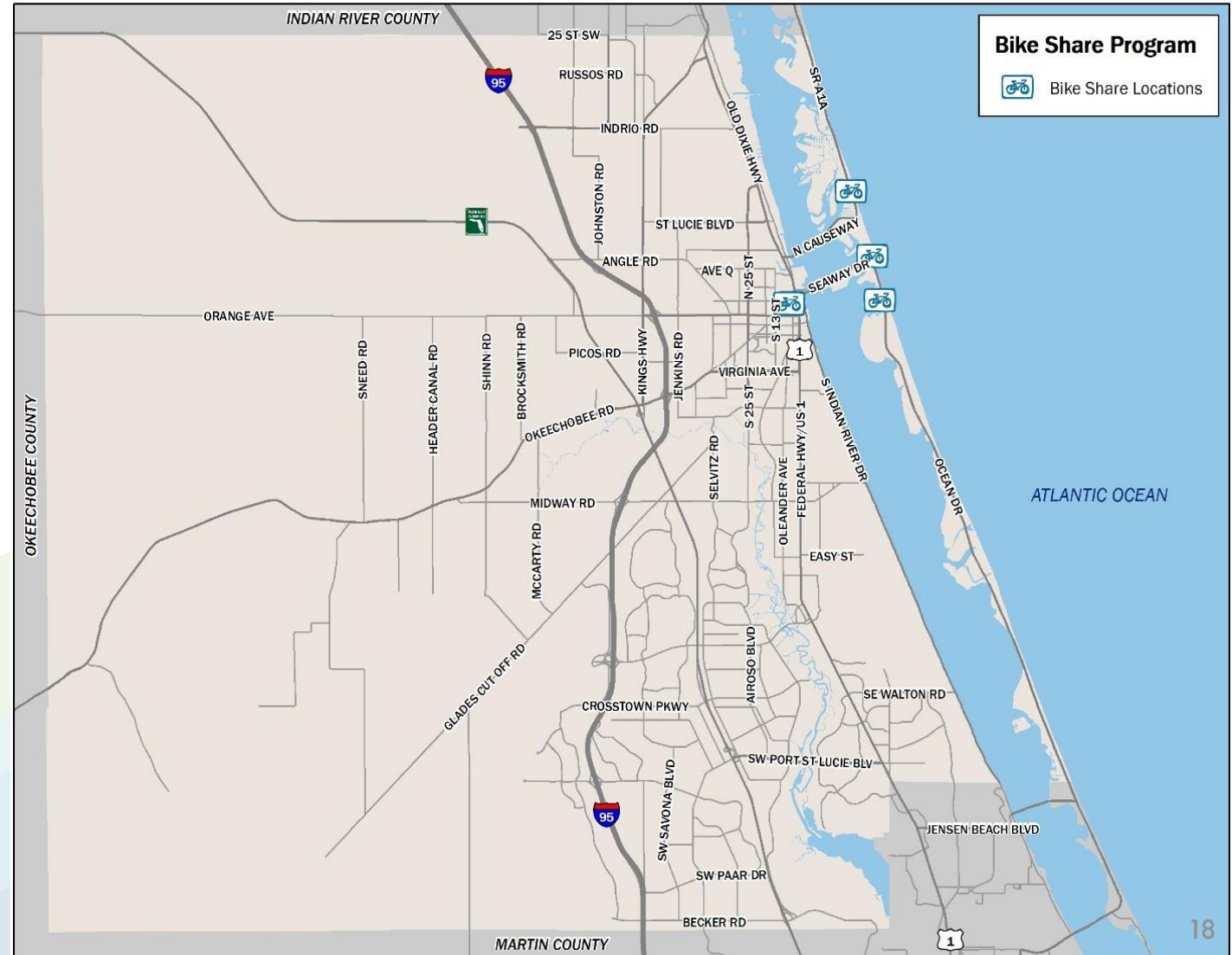
- » Conventional Bike Lane
- » Multi-Use Pathway
- » Paved Shoulder
- » Suggested Connections





# Shared Micromobility

- » Includes several modes of transportation, namely docked and dockless bikeshare systems, electric bikes and electric scooters.
- » St. Lucie County launched a bike share program in January 2018 and electric scooter share program in September 2019 both in City of Fort Pierce.







# **Goals, Objectives, and Performance Measures**



# Vision

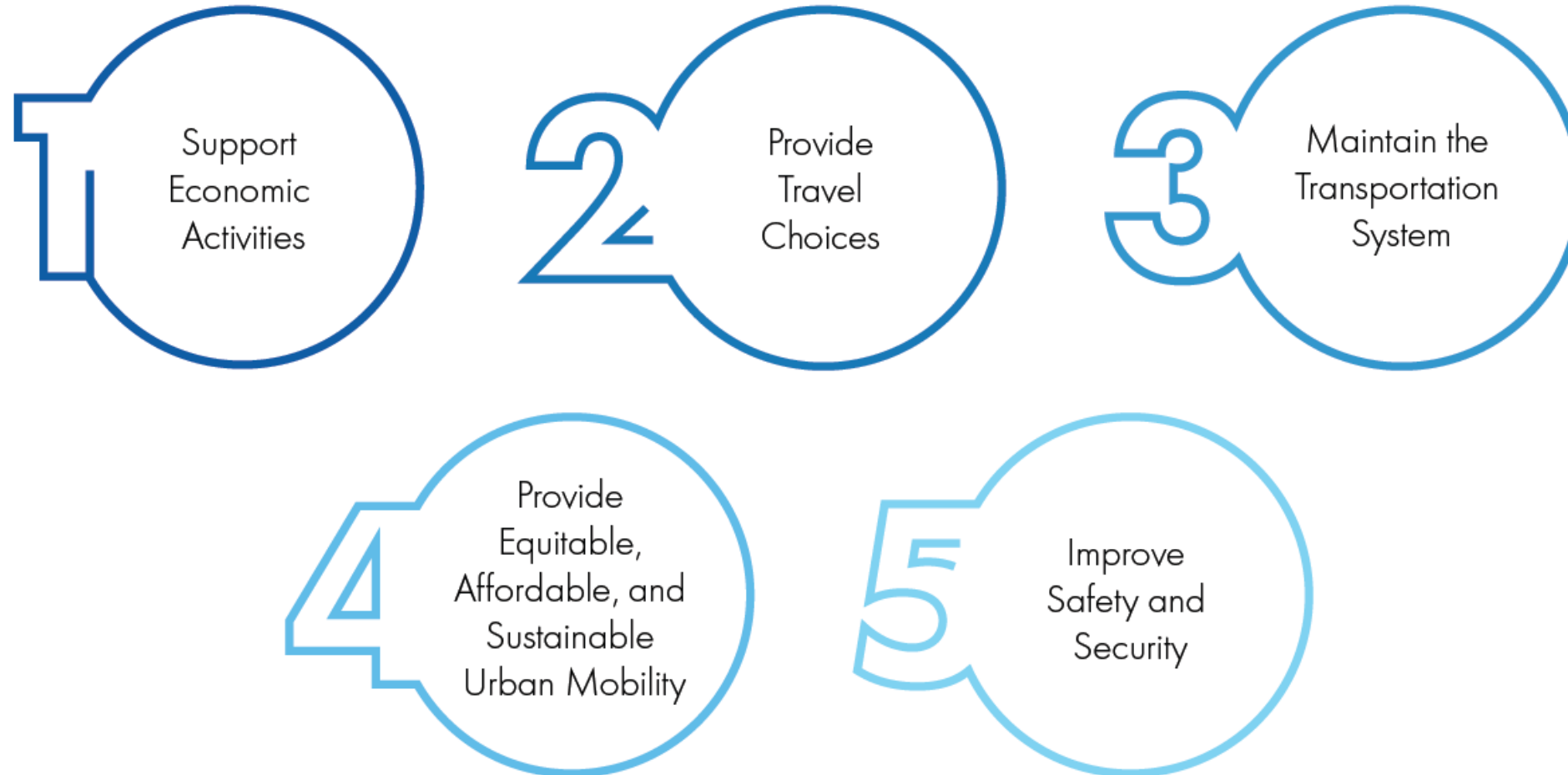
To provide the public a

***SAFE AND EFFICIENT***

multimodal transportation system.



# Goals, Objectives, and Performance Measures





# Goal 1: Support Economic Activity

Objectives	Performance Measures
Enable the efficient movement of people and goods on the roadway network	% of person-miles traveled on the Interstate that are Reliable
	% of person-miles traveled on the non-Interstate NHS that are Reliable
	The sum of maximum Truck Travel Time Reliability (TTTR) for each reporting segment, divided by the total Interstate System miles
Optimize the management and operations of the transportation system	TSM&O Strategic Network Deployment
Maximize the efficiency and effectiveness of the current transit system and improve access to destinations that support economic growth	Ridership
	Cost per passenger trip
	% of routes that serve Major Activity Centers (MACs)



# Goal 2: Provide Travel Choices

Objectives	Performance Measures
Encourage walking, cycling, and other micromobility options	% of roadways with sidewalks
	Miles of multi-use pathways
	% of roadways with bike lanes
Improve transit accessibility	% of transit stops with sidewalk access
	Number of shared bike and/or e-scooter locations



# Goal 3: Maintain the Transportation System

Objectives	Performance Measures
Maintain condition of existing roadway transportation assets	% of pavements of the Interstate System in Good Condition
	% of pavements of the Interstate System in Poor Condition
	% of pavements of the non-Interstate NHS in Good Condition
	% of pavements of the non-Interstate NHS in Poor Condition
	% of NHS Bridges Classified as Good Condition
	% of NHS Bridges Classified as Poor Condition
Maintain condition of existing transit assets	Equipment - Percentage of non-revenue, support-service and maintenance vehicles that have met or exceeded their useful life benchmark
	Rolling Stock - Percentage of revenue vehicles within a particular asset class that have either met or exceeded their useful life benchmark
	Percentage of facilities with a condition rating below 3.0 on the FTA Transit Economic Requirements Model (TERM) Scale



# Goal 4: Provide Equitable, Affordable, & Sustainable Urban Mobility

Objectives	Performance Measures
Support healthy living strategies, programs, and improvements to create more livable communities	Walking modal share
	Bicycle modal share
	Transit modal share
Ensure community participation is representative	Opportunities for engagement in traditionally underserved areas
Provide for transportation needs of transportation disadvantaged	% of low-income, older adults, persons with disabilities within ¼ mile of transit route
Make transportation investments that minimize impacts to natural environment and allocate resources toward mitigation	Number of additional roadway lane miles of impacting environmentally-sensitive areas
Improve transportation system's stability/resiliency in event of climate change, emergencies, or disasters	% of roadway lane miles subject to climate change impacts



# Goal 5: Improve Safety & Security

Objectives	Performance Measures
Improve safety and security in the Highway System	Number of fatalities
	Rate of fatalities per 100 million vehicle miles traveled (VMT)
	Number of serious Injuries
	Rate of serious injures per 100 million VMT
Improve safety and security in the Transit System  <i>(if applicable)</i>	Total number of reportable fatalities
	Rate of reportable fatalities per total vehicle revenue miles by mode
	Total number of reportable injuries
	Rate of reportable injuries per total vehicle revenue miles by mode
	Total number of reportable safety events
	Rate of reportable safety events per total vehicle revenue miles by mode
	Mean distance between major mechanical failures by mode
Improve safety and security in the Non-Motorized System	Number of non-motorized fatalities and serious injuries combined





# **Land Use and Socioeconomic Data**



# Timeline

- » **January 2018:** Bureau of Economic and Business Research (BEBR) published the Projections of Florida Population by County, 2020-2045, with Estimates for 2017
- » **April 2019:** TPO Board accepted the BEBR High population of St. Lucie County projected for 2045
- » **February 2020:** TPO held a Model Focus Group
- » **March 2020 – Present:** Updated the population and employment data projected for 2045 based on the information provided and heard from the Model Focus Group

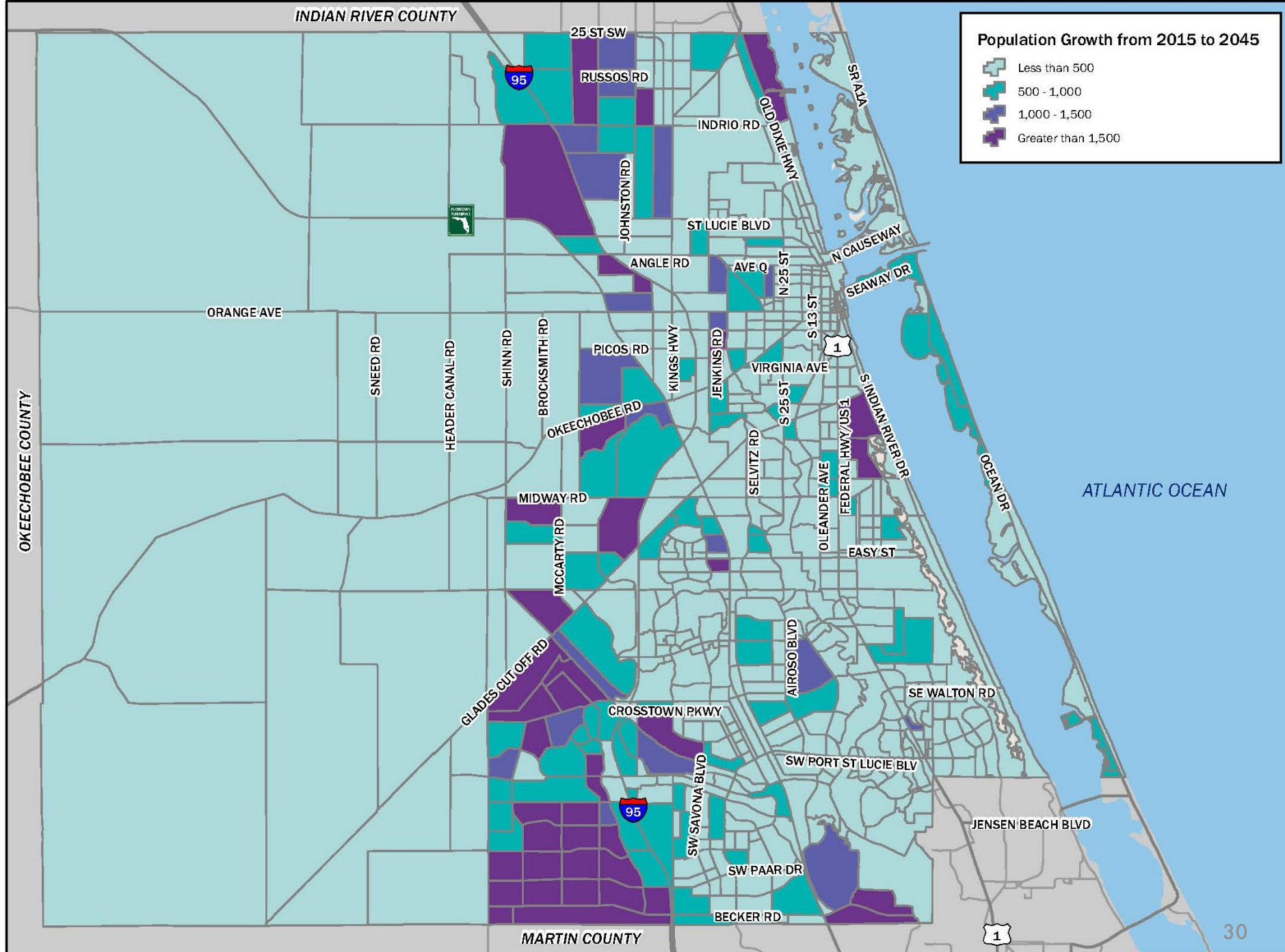


# Socioeconomic Data

	Population	Household (Dwelling Units)	Total Employment
2045	525,100	211,538	183,300
Total Growth	<b>232,738</b>	<b>94,683</b>	<b>75,203</b>
Percent Growth	<b>79.61%</b>	<b>81.03%</b>	<b>69.57%</b>

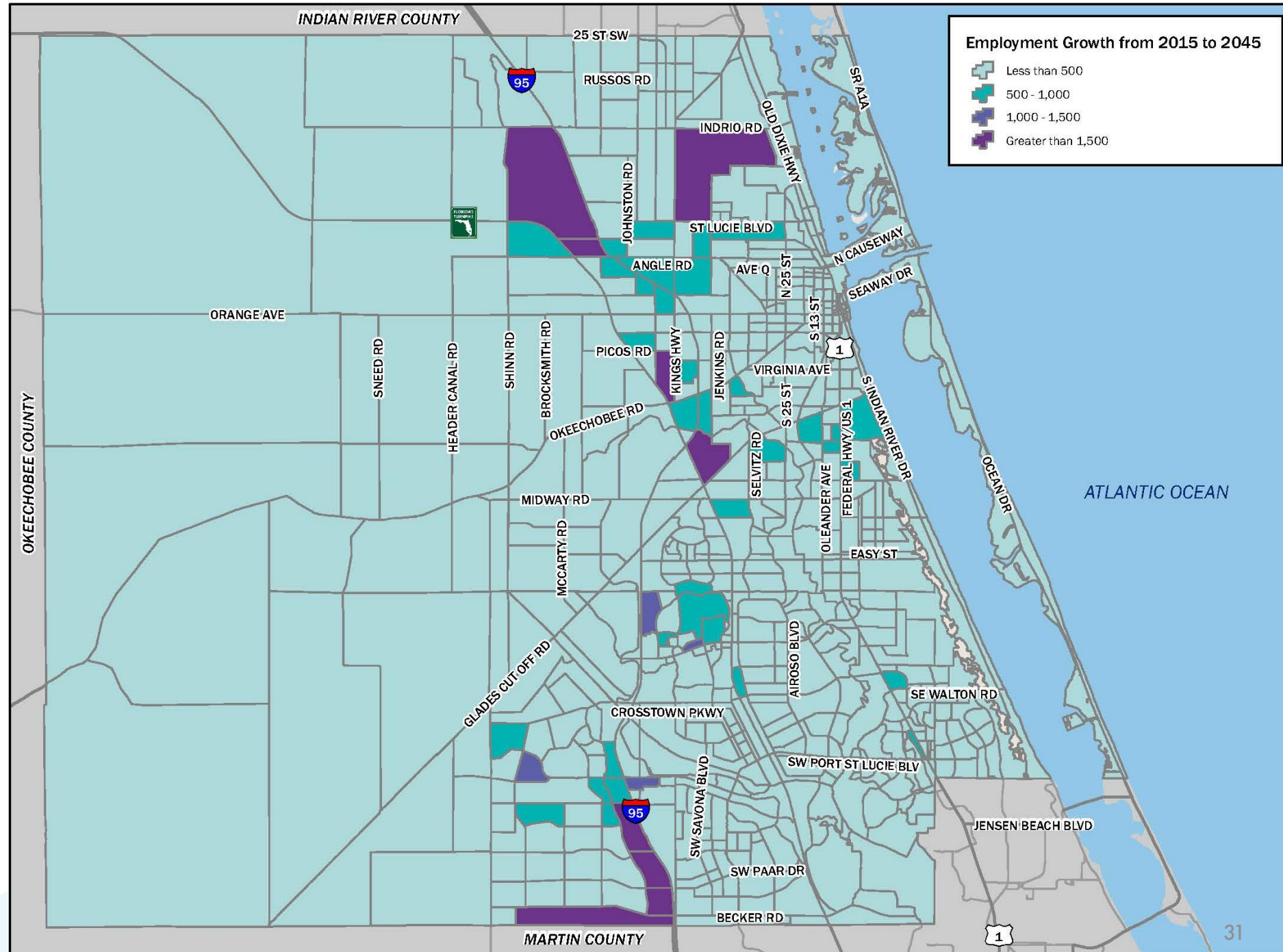


# Population Growth from 2015 to 2045

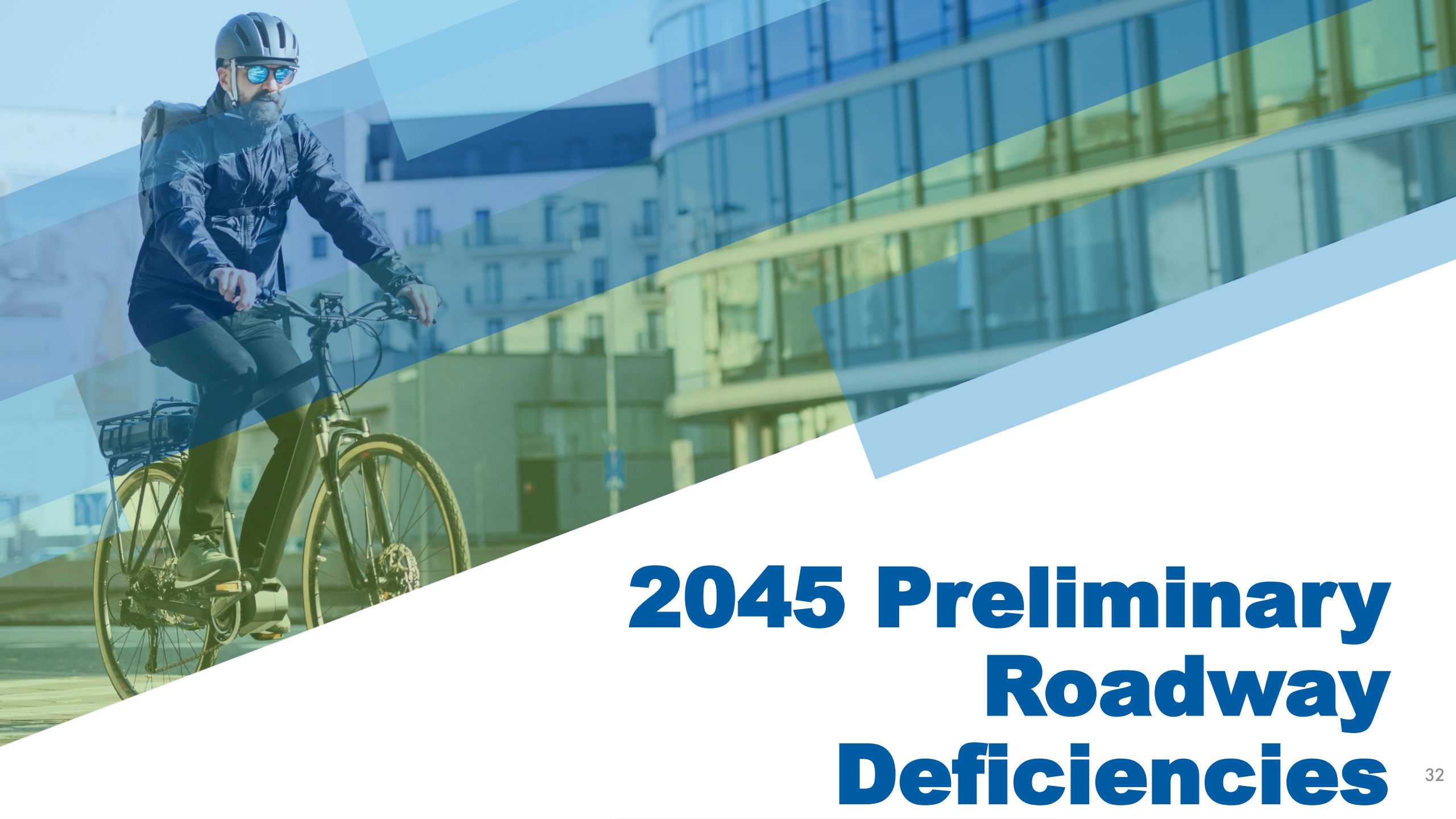




# Employment Growth from 2015 to 2045

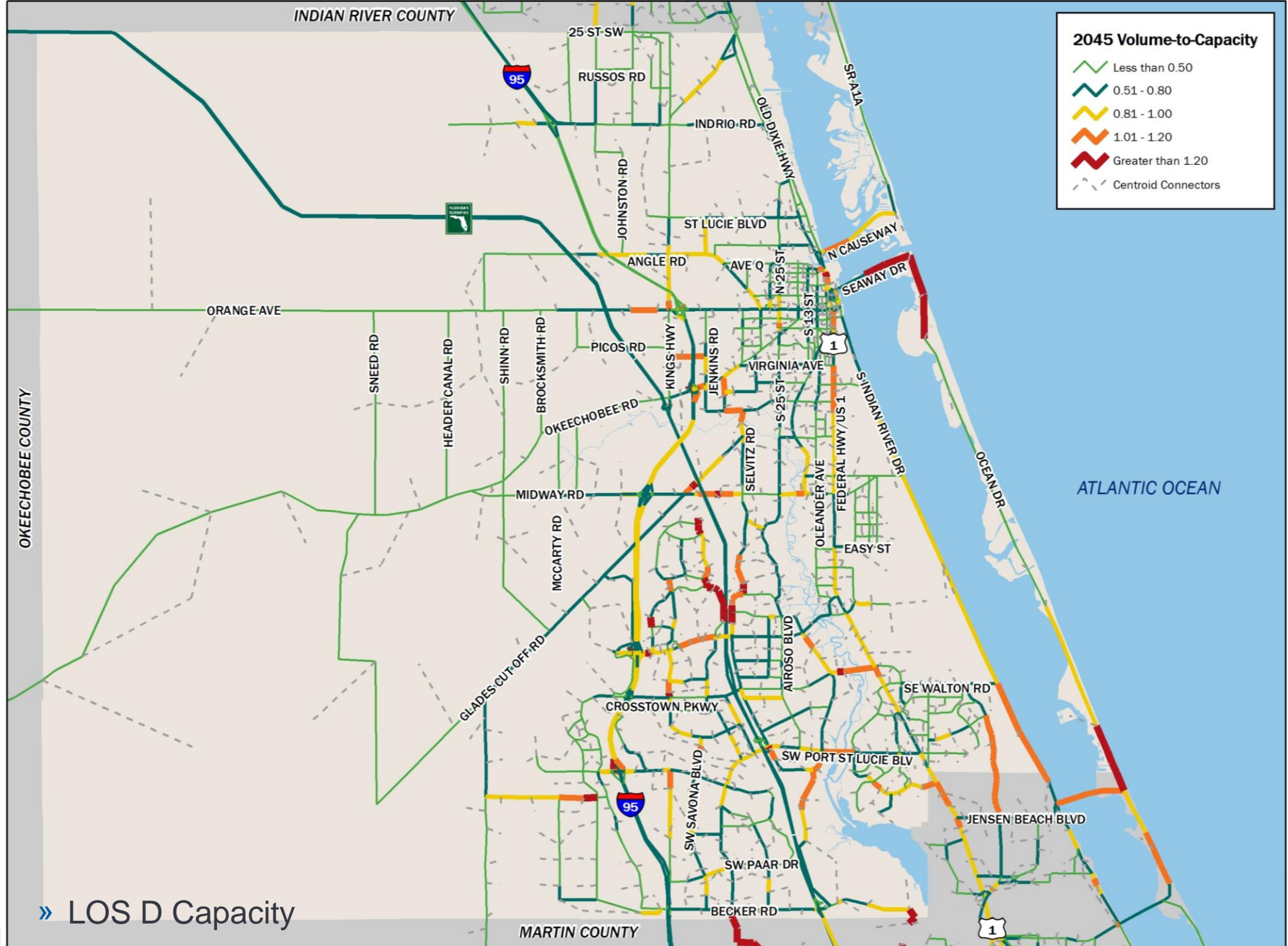




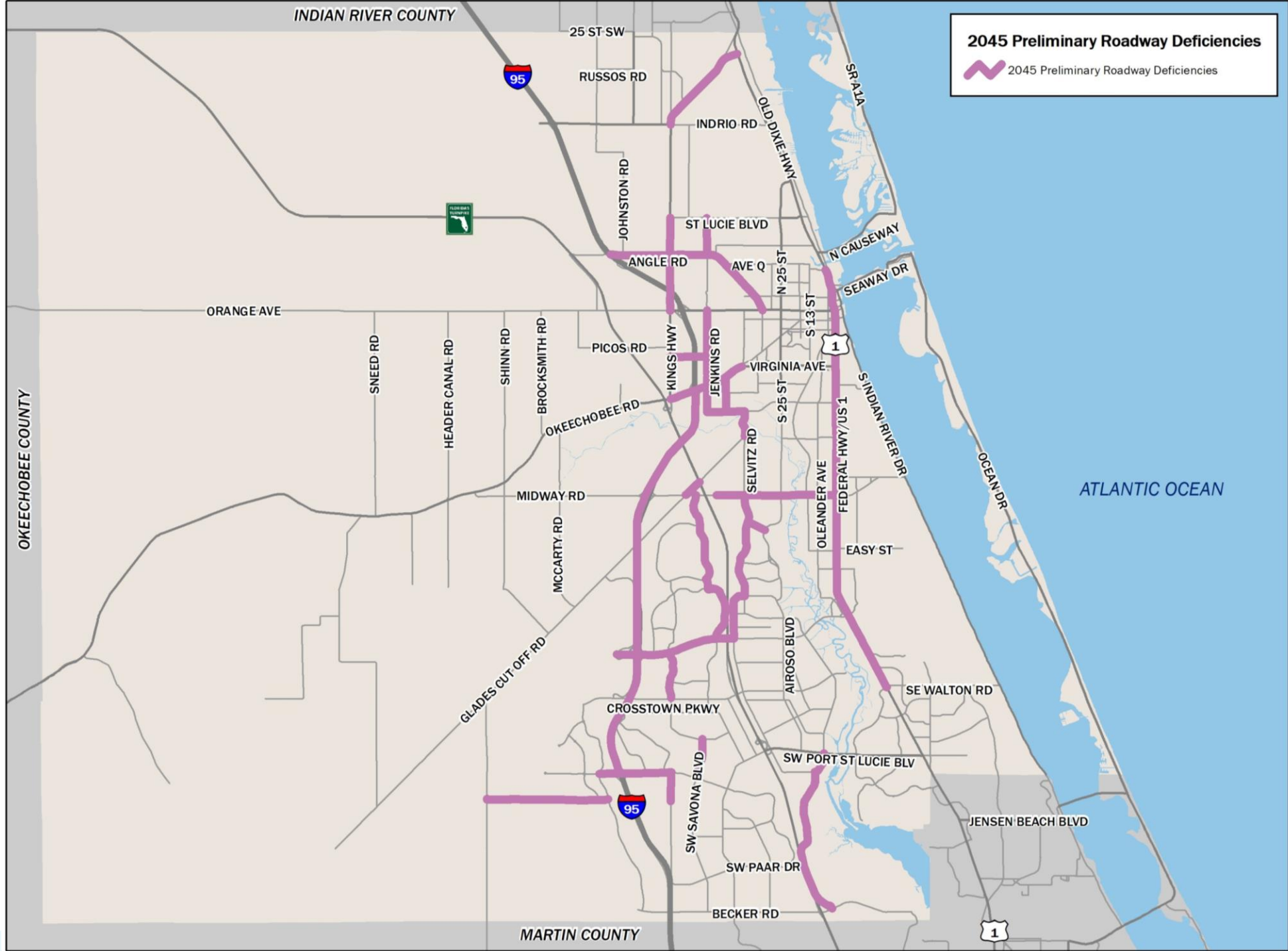


# **2045 Preliminary Roadway Deficiencies**

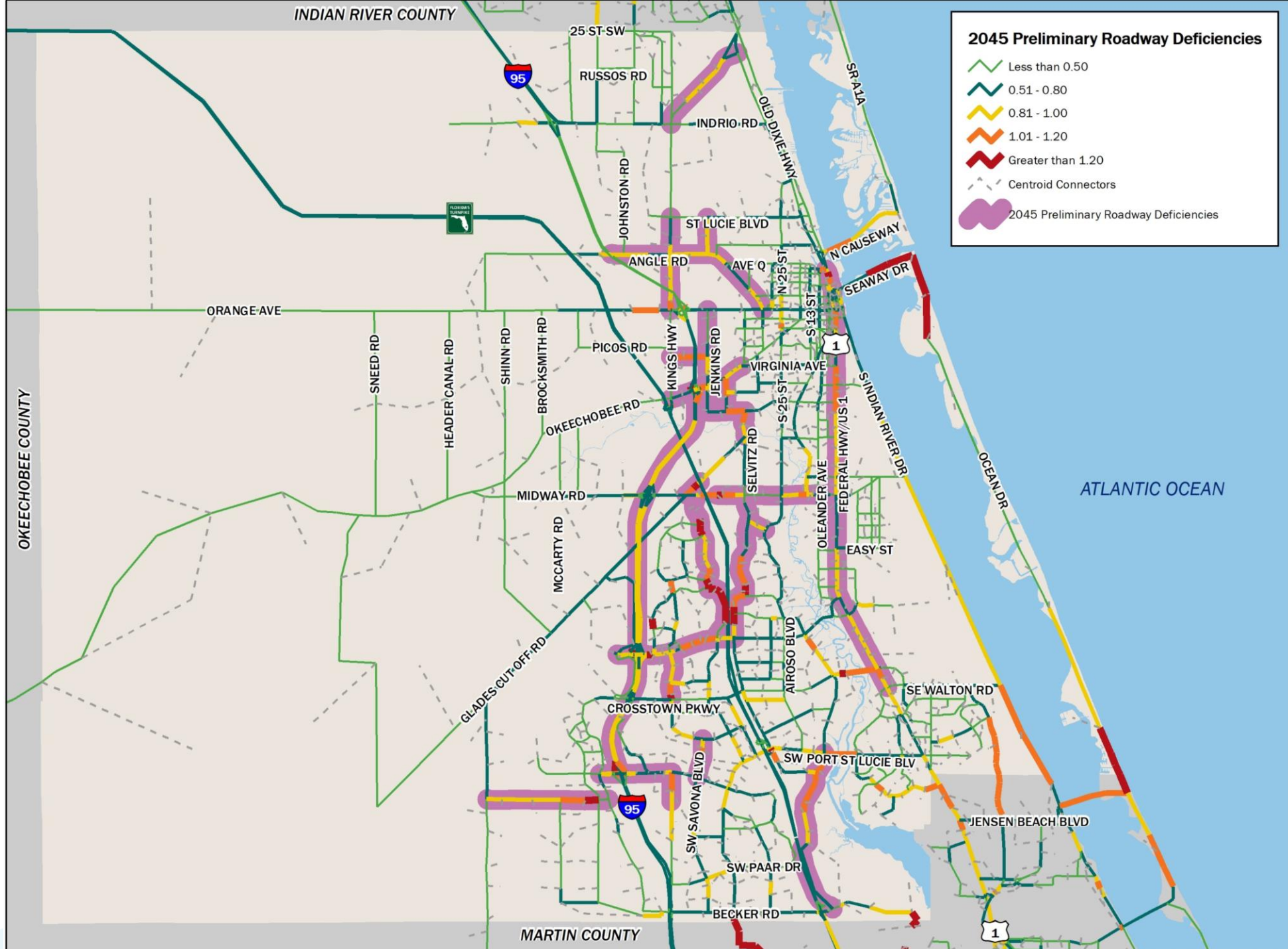
















# Next Steps



# Next Steps

- » Prepare the Needs Assessment
  - » Fiscally unconstrained, meaning funding requirements for improvements are not yet considered
  - » Serves as the basis for the later development of the Cost Feasible Plan
- » Develop revenue projections
  - » Federal, State, and local sources
  - » The projections represent the TPO's outlook on available future transportation program funding in St. Lucie County





# Approval Items



# Approval Items

- » Goals, Objectives, and Performance Measures
- » Land Use and Socioeconomic Data